

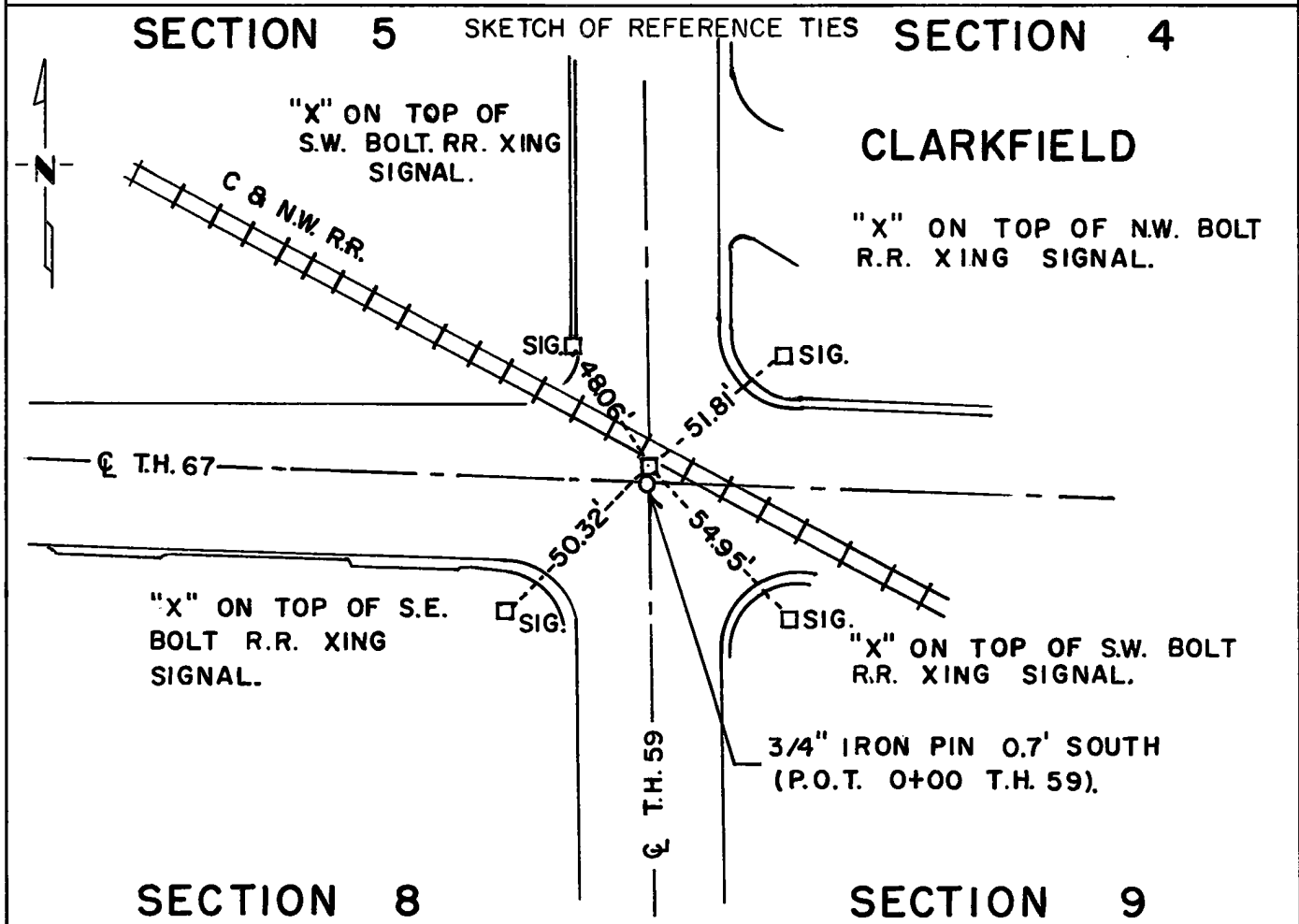
CERTIFICATE OF LOCATION OF GOVERNMENT CORNER

North East Corner of Section 8, Township 115N, Range 41W, 5th P.M.

STATE OF MINNESOTA, County of Yellow Medicine

At the corner location shown on the sketch:

- On Mar. 9, 1973 found a 6" x 6" x 24" quarried granite stone 4" below
DATE
bituminous roadway surface 0.7' North of T.H. 59 P.O.T. Sta. 0+00.
 left monument as found, lowered monument, removed monument (explain)
- On Mar. 9, 1973 placed a railroad spike on surface with a punch mark above
DATE
center of stone.



Statement of evidence relative to this corner location is on back of page.

I hereby certify that this document and the data contained herein was prepared by me or under my direct supervision.

Goodwin R. Heim Dahl 1-10-74
SIGNATURE DATE

Registration No. 5761

- Land Surveyor, Professional Engineer
- County Surveyor, County Engineer

OFFICE OF THE REGISTER OF DEEDS
County of Yellow Medicine **162720**

I hereby certify that this document was filed in the Reg. of Deeds office at 9:35 P.M. on the 11 day of January A.D., 19 74

Register of Deeds Norman J. Opdahl

By Kay Nordahl, Deputy

DOCUMENT NO. 162720

Statement of Evidence:

On March 9, 1973 a 6" x 6" x 24" quarried granite stone was found in place, 4 inches below the bituminous roadway surface. Located 0.7 feet North of T.H. 59 P.O.T. Sta. 0+00 marked by a 3/4" iron pin in place.

Drilled hole at center of stone in place and placed a railroad spike on surface of the roadway with a punch mark above center of stone.