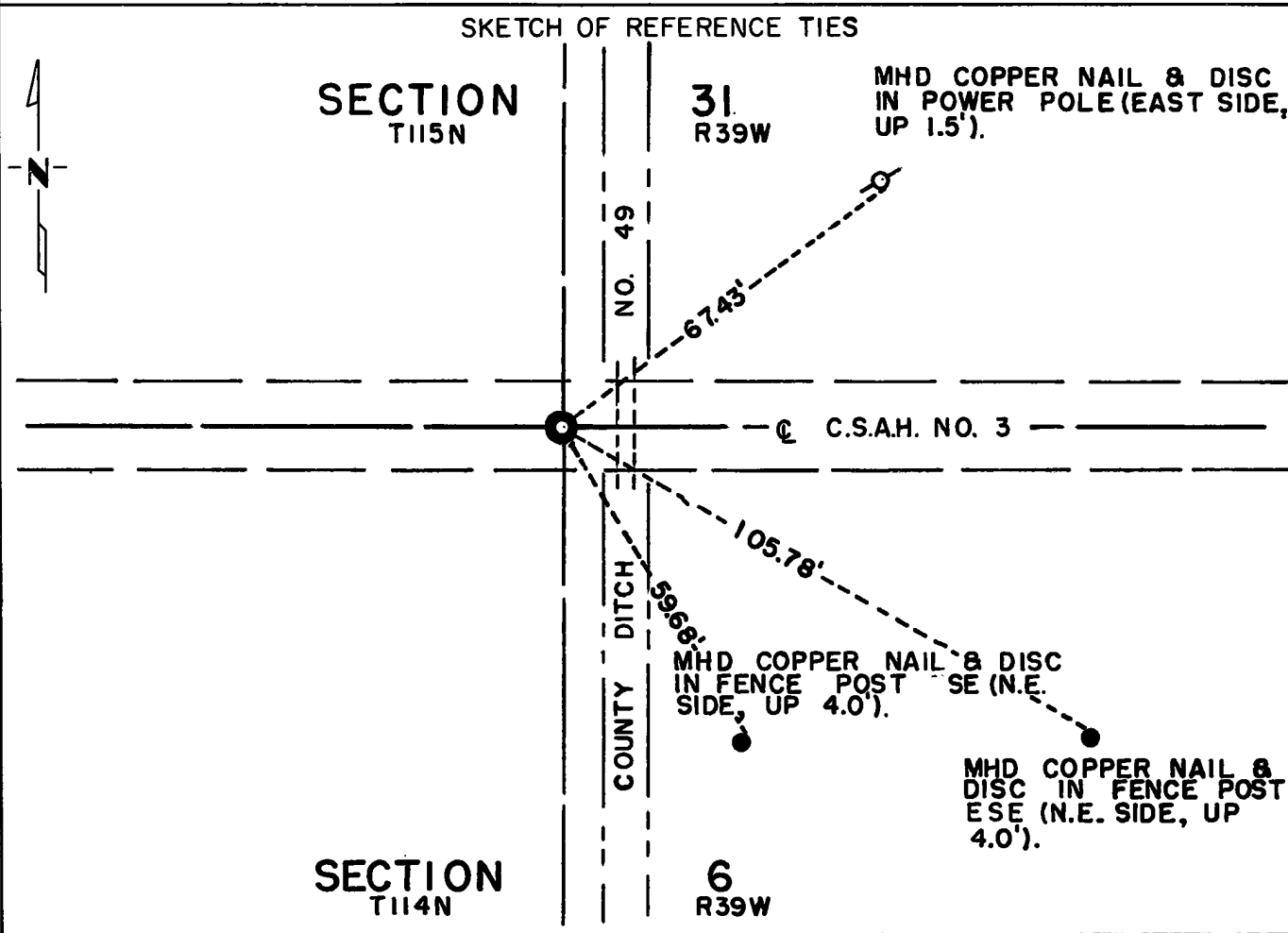


# CERTIFICATE OF LOCATION OF GOVERNMENT CORNER

North Quarter Corner of Section 6, Township 114N, Range 39W, 5th P.M.  
STATE OF MINNESOTA, County of Yellow Medicine

At the corner location shown on the sketch:

- On Oct. 20, 1971 found a 15 inch x 18 inch x 12 inch field stone down 2.5 feet  
DATE
- left monument as found,  lowered monument,  removed monument (explain)
- On Sept. 1, 1972 placed a Minnesota Highway Department cast iron monument over  
stone. (down 0.3 feet)  
DATE



Statement of evidence relative to this corner location is on back of page.

I hereby certify that this document and the data contained herein was prepared by me or under my direct supervision.

Jesse E. Fant 10/11/73  
SIGNATURE DATE

Registration No. 3230

- Land Surveyor,  Professional Engineer
- County Surveyor,  County Engineer

OFFICE OF THE REGISTER OF DEEDS  
County of Yellow Medicine

I hereby certify that this document was filed in the Reg. of Deeds office at 9:40 A.M. on the 11 day of January A.D., 1974

Register of Deeds Norman J. Opdahl

By Kay Dersdahl, Deputy

DOCUMENT NO. 162721

Statement of Evidence: NORTH QUARTER CORNER SECTION 6, T114N, R39W

The original Public Land Survey was run in 1858 and a wood post was set as a witness post 4.88 chains east of the corner. The corner was in a marshy area.

In 1914, John Norgaard, County Surveyor, set the North Quarter corner on line and at proportionate distances between the section corners. Norgaard placed a stone to mark the corner.

In 1934, Norgaard located the stone again.

On October 20, 1971, the Minnesota Highway Department excavated 8 feet x 12 feet x 3 feet deep and found the stone on centerline of east-west road and on field division north and power line south.

An analysis of the record data compared to 1972 field measurements indicates that the stone is the accepted location of the original Public Land Survey corner.

For details of survey analysis, photographs taken during excavation, and 1972 electronic survey measurements, see Survey Report for S.P. 4203 and 8701 on file in the Surveys Section, Minnesota Highway Department, Willmar, Minnesota.