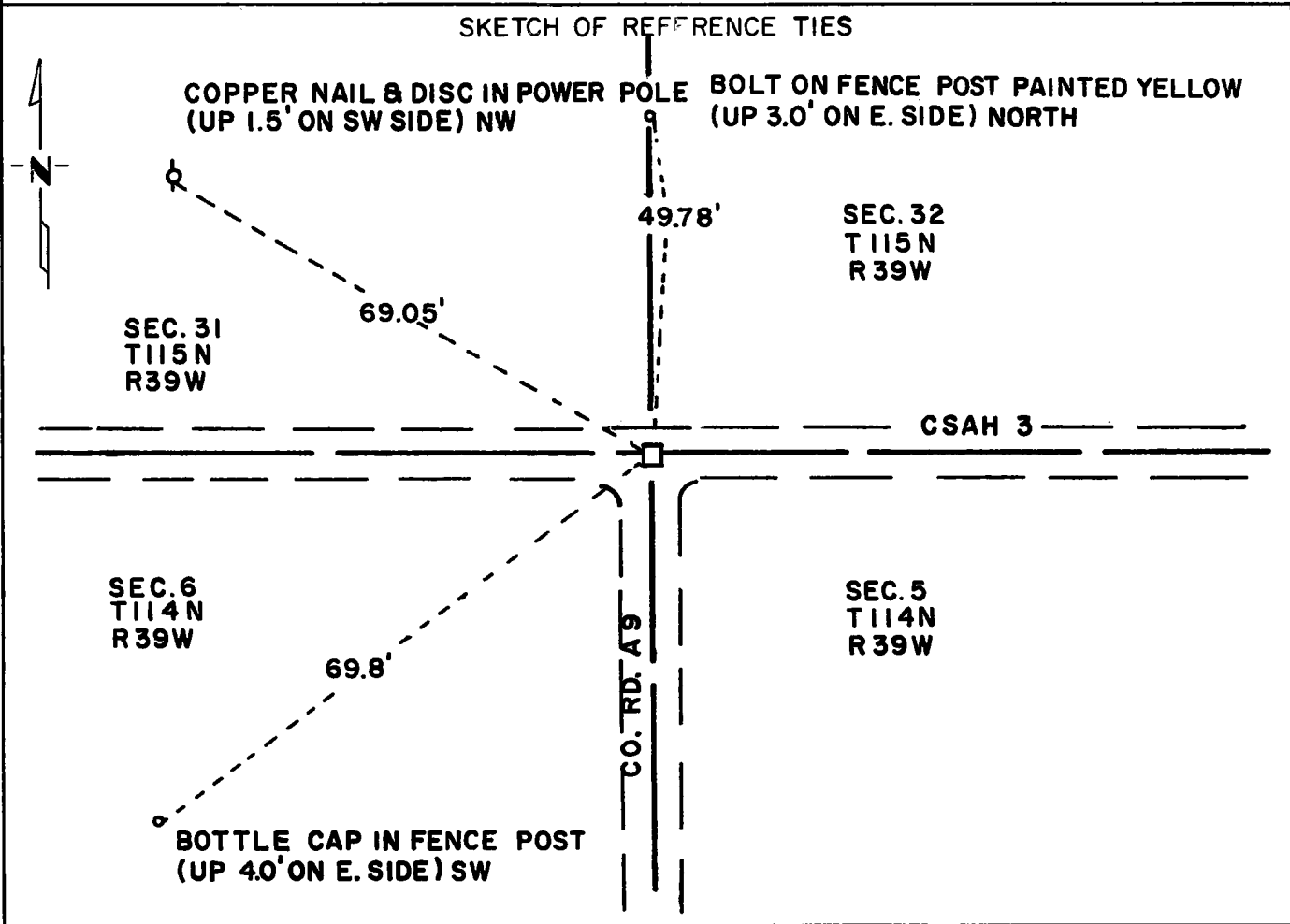


# CERTIFICATE OF LOCATION OF GOVERNMENT CORNER

Northeast Corner of Section 6, Township 114N, Range 39W, 5th P.M.  
 STATE OF MINNESOTA, County of Yellow Medicine

At the corner location shown on the sketch:

- On Sept. 29, 1971 found a 6 inch x 6 inch x 24 inch jasper monument with stone  
 on top (1 foot below surface)  
 left monument as found,  lowered monument,  removed monument (explain)
- On \_\_\_\_\_ placed a \_\_\_\_\_  
 DATE



Statement of evidence relative to this corner location is on back of page.

I hereby certify that this document and the data contained herein was prepared by me or under my direct supervision.

Jesse E. Fant 12/4/73  
 SIGNATURE DATE

Registration No. 3230  
 Land Surveyor,  Professional Engineer  
 County Surveyor,  County Engineer

OFFICE OF THE REGISTER OF DEEDS  
 County of Yellow Medicine

I hereby certify that this document was filed in the Reg. of Deeds office at 9:45 A.M. on the 11 day of January A.D., 19 74

Register of Deeds Norman J. Opdahl  
 By Kay Nerdahl, Deputy  
 DOCUMENT NO. 162722

Statement of Evidence: NORTHEAST CORNER SECTION 6, T114N, R39W

The original Public Land Survey was run in 1858 and a wood post was set in a mound with pits to mark the corner.

In 1901 John Norgaard, County Surveyor, found a stone and iron bolt that he had set years before and set a 6 inch x 6 inch x 24 inch jasper monument to mark the corner.

In 1914 and 1934 Norgaard found the monument that he had set in 1901.

In 1940 and 1971 the Yellow Medicine County Highway Department located the monument.

On September 29, 1971 the Minnesota Highway Department found the monument at centerline of east-west road and on fence line north and road south.

An analysis of the record data dating to the original monument provides a continuous chain of perpetuation of the original Public Land Survey corner.

For details of survey analysis, photographs taken during excavation, and 1972 electronic survey measurements, see Survey Report for S.P. 4203 and 8701 on file in the Surveys Section, Minnesota Highway Department, Willmar, Minnesota.