

# CERTIFICATE OF LOCATION OF GOVERNMENT CORNER

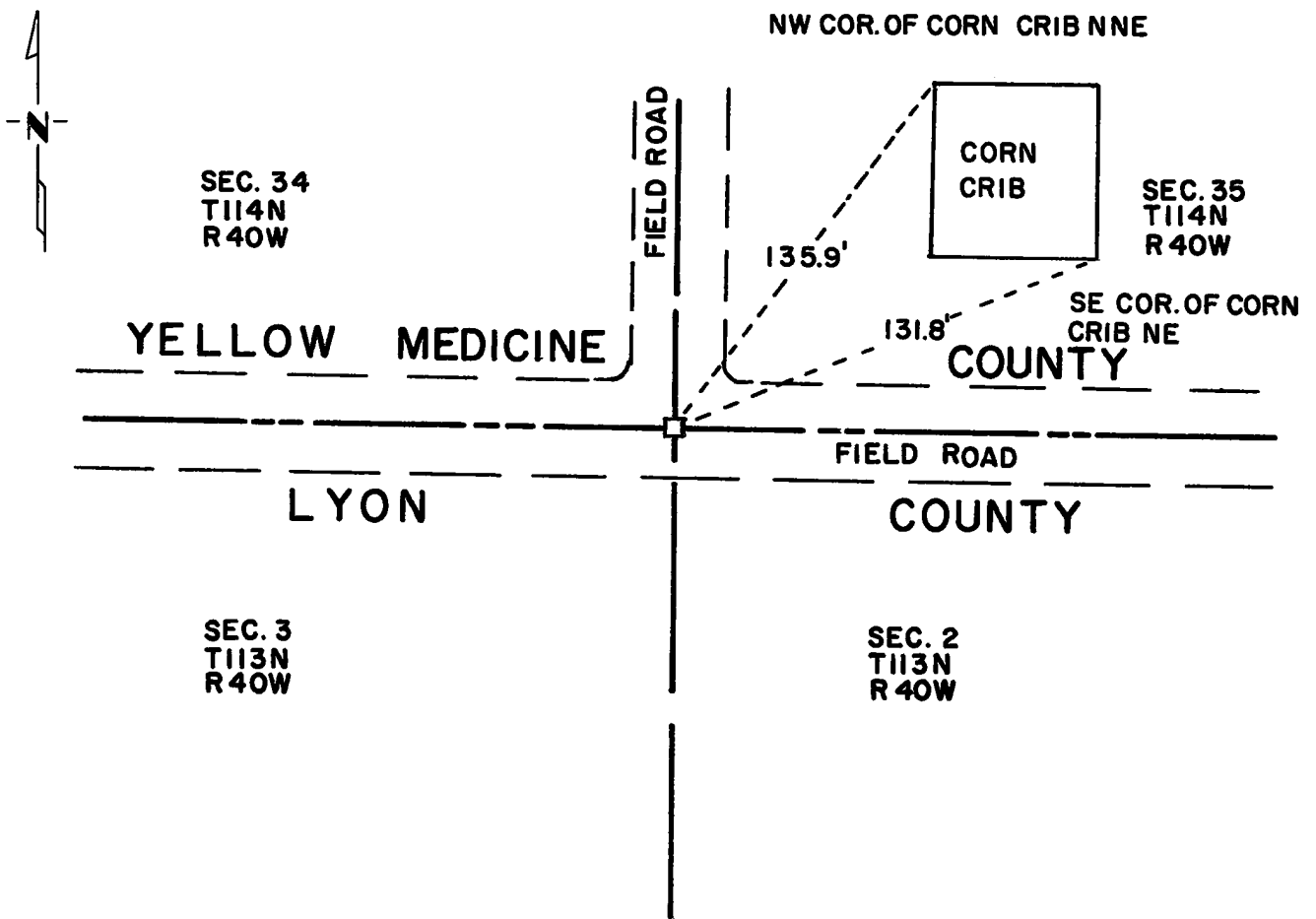
Southeast Corner of Section 34, Township 114N, Range 40W, 5th P.M.

STATE OF MINNESOTA, County of Yellow Medicine

At the corner location shown on the sketch:

- On Sept. 24, 1971 found a jasper monument with large field stone on top.  
DATE
- left monument as found,  lowered monument,  removed monument (explain)
- On Aug. 28, 1972 placed a 18 inch iron rod, south edge of jasper monument down  
DATE 0.5 feet for locating with metal detector.

### SKETCH OF REFERENCE TIES



Statement of evidence relative to this corner location is on back of page.

I hereby certify that this document and the data contained herein was prepared by me or under my direct supervision.

Jesse E. Fant 10/11/73  
SIGNATURE DATE

Registration No. 3230  
 Land Surveyor,  Professional Engineer  
 County Surveyor,  County Engineer

OFFICE OF THE REGISTER OF DEEDS  
 County of Yellow Medicine

I hereby certify that this document was filed in the Reg. of Deeds office at 9:50 A.M. on the 11 day of January A.D., 1974

Register of Deeds Norman J. Opdahl  
 By Kay Nordahl, Deputy  
 DOCUMENT NO. 162723

Statement of Evidence: SOUTHEAST CORNER SECTION 34, T114N, R40W

The original Public Land Survey was run in 1858 and a wood post was set in a mound with pits to mark the corner.

In 1901 John Norgaard, County Surveyor, found the original government mound and placed a 6 inch x 6 inch x 24 inch jasper monument to mark the corner.

In 1933 Warren Keith, County Surveyor, found the jasper monument.

On September 24, 1971 Minnesota Highway Department dug for and found the jasper monument with a field stone on top at centerlines of east-west field road and field road north.

An analysis of the record data dating to the original corner provides a continuous chain of perpetuation of the original Public Land Survey corner.

For details of survey analysis, photographs taken during excavation, and 1972 electronic survey measurements, see Survey Report for S.P. 4203 and 8701 on file in the Surveys Section, Minnesota Highway Department, Willmar, Minnesota.