

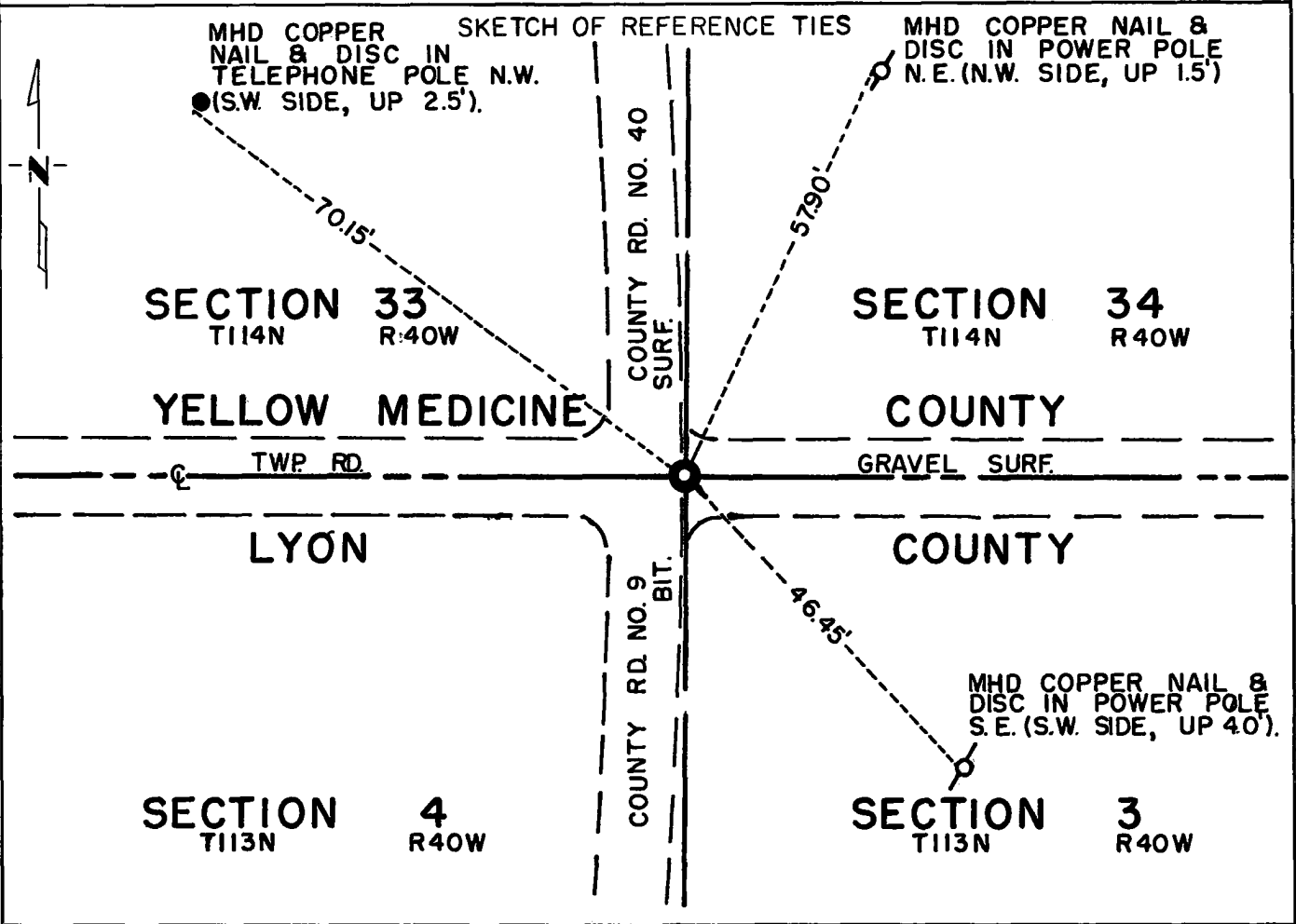
CERTIFICATE OF LOCATION OF GOVERNMENT CORNER

Southeast Corner of Section 33, Township 114N, Range 40W, 5th P.M.

STATE OF MINNESOTA, County of Yellow Medicine

At the corner location shown on the sketch:

- On Dec. 15, 1970 found a field stone, down 3.0 feet on top of a 6 inch x 6 inch x 24 inch jasper monument.
DATE
- left monument as found, lowered monument, removed monument (explain)
- On Aug. 10, 1972 placed a Minnesota Highway Department cast iron monument over jasper monument. (0.1 feet below road surface)
DATE



Statement of evidence relative to this corner location is on back of page.

I hereby certify that this document and the data contained herein was prepared by me or under my direct supervision.

Jesse E. Faust 10/11/73
SIGNATURE DATE

Registration No. 3230

- Land Surveyor, Professional Engineer
- County Surveyor, County Engineer

OFFICE OF THE REGISTER OF DEEDS
County of Yellow Medicine

I hereby certify that this document was filed in the Reg. of Deeds office at 9:55 A.M. on the 11 day of January A.D., 19 74

Register of Deeds Norman J. Opdahl

By Kay Nendahl, Deputy

DOCUMENT NO. 162724

Statement of Evidence: SOUTHEAST CORNER SECTION 33, T114N, R40W

The original Public Land Survey was run in 1858 and a wood post was set in a mound with pits to mark the corner.

In 1901 John Norgaard, County Surveyor, established the corner by single proportionate methods and set a 6 inch x 6 inch x 18 inch jasper monument, level with the ground.

In 1941 the Yellow Medicine County Highway Department found the monument with a field stone on top.

In 1961 the Lyon County Highway Department found the monument with a field stone on top.

On December 15, 1970 Minnesota Highway Department found the jasper monument with a field stone on top at centerline of an east-west road and P.I. of a north-south road.

An analysis of the record data indicates that the jasper monument set by John Norgaard in 1901 is in the accepted location of the Public Land Survey corner.

For details of survey analysis and 1972 electronic survey measurements, see Survey Report for S.P. 4203 and 8701 on file in the Surveys Section, Minnesota Highway Department, Willmar, Minnesota.