

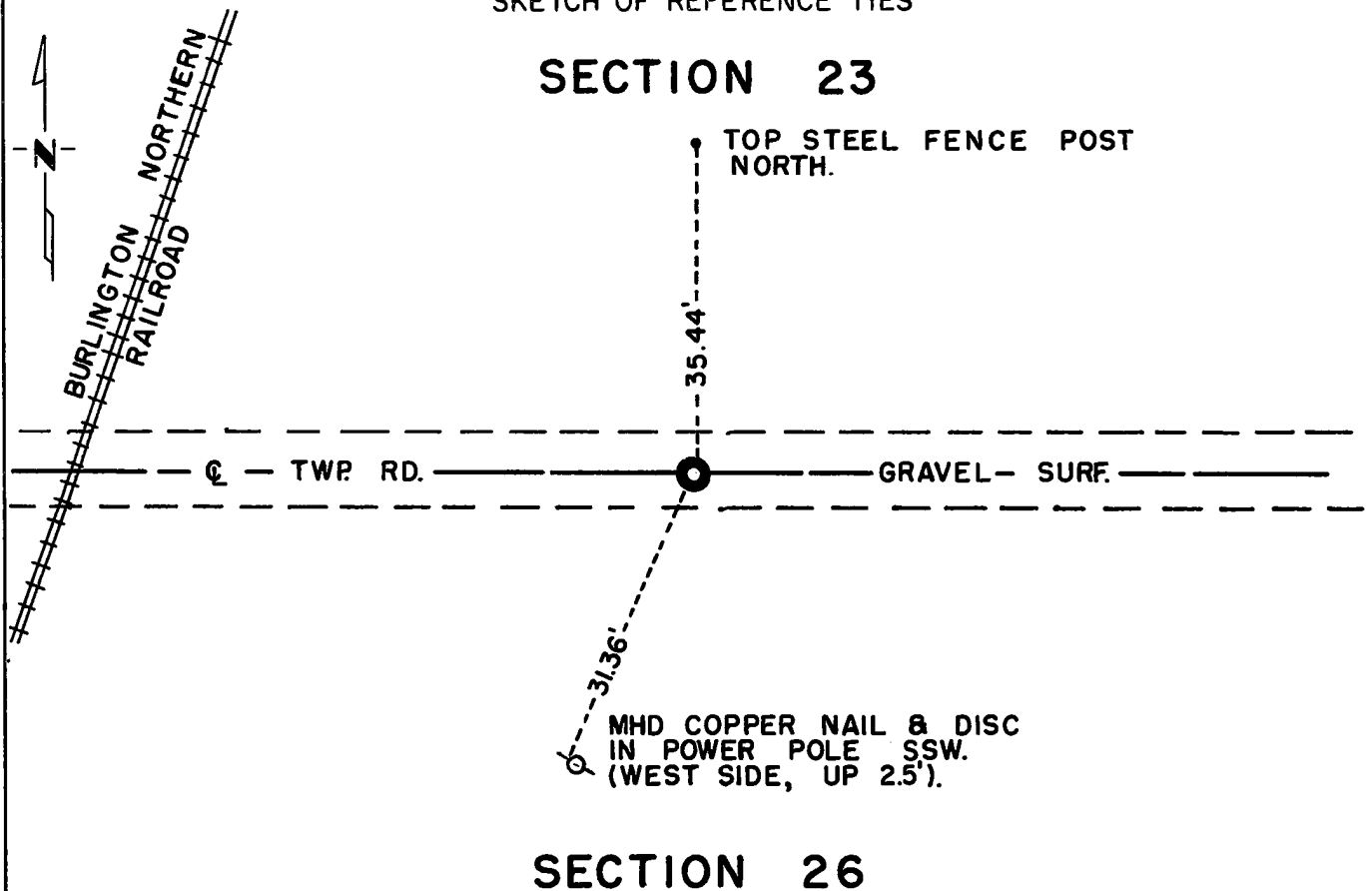
CERTIFICATE OF LOCATION OF GOVERNMENT CORNER

North Quarter _____ Corner of Section 26, Township 114N, Range 40W, 5th P.M.
 STATE OF MINNESOTA, County of Yellow Medicine

At the corner location shown on the sketch:

- On July 28, 1972 found a 8 inch x 10 inch x 5 inch field stone with a 3 inch x 3 inch x 6 inch field stone along side
DATE
- left monument as found, lowered monument, removed monument (explain)
- On Aug. 25, 1972 placed a Minnesota Highway Department cast iron monument over 8 inch x 10 inch x 5 inch field stone. (down 0.2 feet)
DATE

SKETCH OF REFERENCE TIES



Statement of evidence relative to this corner location is on back of page.

I hereby certify that this document and the data contained herein was prepared by me or under my direct supervision.

Jesse S. Fant 10/11/73
SIGNATURE DATE

Registration No. 3230
 Land Surveyor, Professional Engineer
 County Surveyor, County Engineer

OFFICE OF THE REGISTER OF DEEDS
 County of Yellow Medicine

I hereby certify that this document was filed in the Reg. of Deeds office at 10:00 A.M. on the 11 day of January A.D., 1974

Register of Deeds Norman J. Opdahl
 By Kay Nordahl, Deputy

DOCUMENT NO. 162725

Statement of Evidence: NORTH QUARTER CORNER SECTION 26, T114N, R40W

The original Public Land Survey was run in 1864 and a wood post was set in a mound with pits to mark the corner.

On July 28, 1971, Minnesota Highway Department found a 5 inch x 8 inch x 10 inch field stone with a 3 inch x 3 inch x 6 inch field stone alongside it. The stone was on centerline of east-west township road and on field division to the north.

The origin of the stone could not be determined, but it is in agreement with occupation lines of long standing. The in-place stone is accepted as the location of the Public Land Survey corner.

For details of survey analysis, photographs taken during excavation, and 1972 electronic survey measurements, see Survey Report for S.P. 4203 and 8701 on file in the Surveys Section, Minnesota Highway Department, Willmar, Minnesota.