

CERTIFICATE OF LOCATION OF GOVERNMENT CORNER

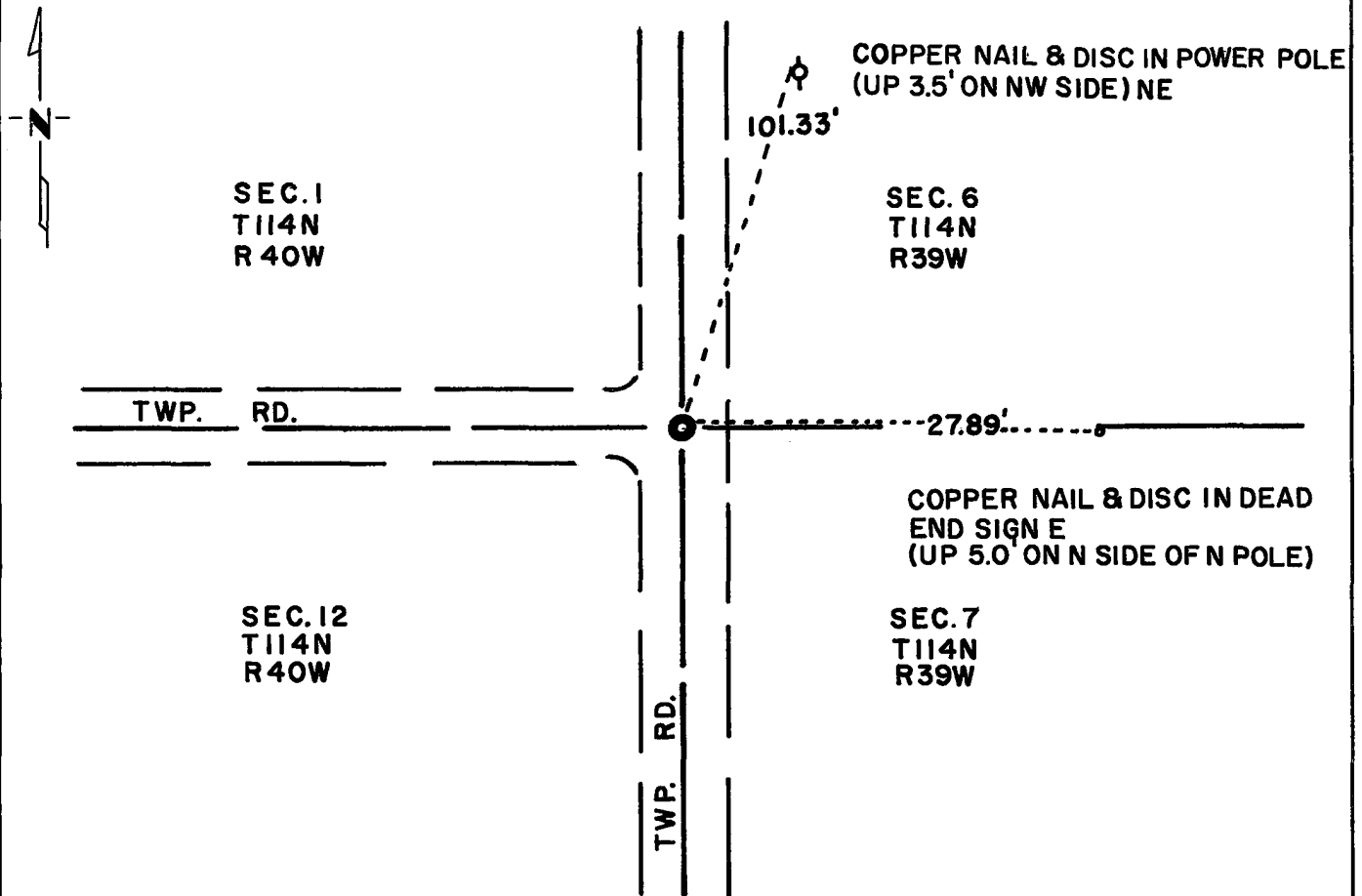
Northeast Corner of Section 12, Township 114N, Range 40W, 5th P.M.

STATE OF MINNESOTA, County of Yellow Medicine

At the corner location shown on the sketch:

- On Sept. 28, 1971 found a 6 inch x 6 inch x 24 inch jasper monument with rock on top (down 2.5 feet)
DATE
 left monument as found, lowered monument, removed monument (explain)
- On Aug. 25, 1972 placed a Minnesota Highway Department cast iron monument over jasper monument. (down 0.3 feet)
DATE

SKETCH OF REFERENCE TIES



Statement of evidence relative to this corner location is on back of page.

I hereby certify that this document and the data contained herein was prepared by me or under my direct supervision.

Jesse E. Fant 10/11/73
SIGNATURE DATE

Registration No. 3230

- Land Surveyor, Professional Engineer
- County Surveyor, County Engineer

OFFICE OF THE REGISTER OF DEEDS
 County of Yellow Medicine

I hereby certify that this document was filed in the Reg. of Deeds office at 10:05 A.M. on the 11 day of January A.D., 1974

Register of Deeds Norman J. Opdahl

By Kay Nerdahl, Deputy

DOCUMENT NO. 162726

Statement of Evidence: NORTHEAST CORNER SECTION 12, T114N, R40W

The original Public Land Survey was run in 1858 and a wood post was set in a mound with pits to mark the corner.

In 1901, John Norgaard, County Surveyor, found a stone, set in government mound by adjoining farmers, at the intersection of roads. He placed a 6 inch x 6 inch x 24 inch jasper monument.

In 1916, Norgaard again located the corner.

In 1940, the Yellow Medicine County Highway Department found the monument.

On September 28, 1971, the Minnesota Highway Department found the jasper monument at centerline of roads north, south and west.

An analysis of the record data dating to the original monument provides a continuous chain of perpetuation of the original Public Land Survey corner.

For details of survey analysis, photographs taken during excavation, and 1972 electronic survey measurements, see Survey Report for S.P. 4203 and 8701 on file in the Surveys Section, Minnesota Highway Department, Willmar, Minnesota.