

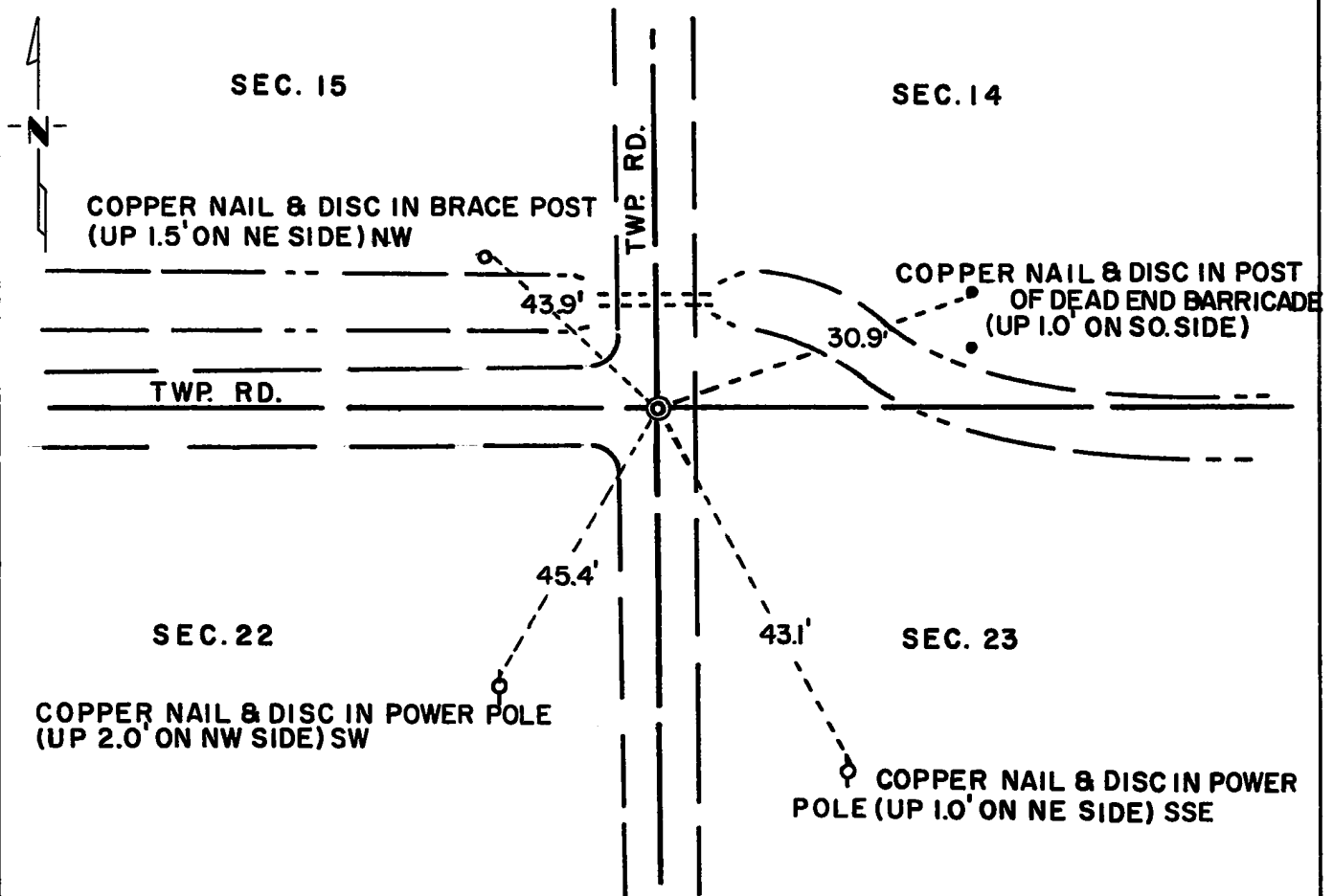
CERTIFICATE OF LOCATION OF GOVERNMENT CORNER

Northeast Corner of Section 22, Township 114N, Range 40W, 5th P.M.
 STATE OF MINNESOTA, County of Yellow Medicine

At the corner location shown on the sketch:

- On Dec. 15, 1970 found a 6 inch x 6 inch x 24 inch jasper monument (down 1.0 foot)
DATE
- left monument as found, lowered monument, removed monument (explain)
- On Aug. 10, 1972 placed a 3/4 inch x 12 inch iron pin on north edge of jasper
DATE
monument, down 1.0 foot, for locating with metal detector.

SKETCH OF REFERENCE TIES



Statement of evidence relative to this corner location is on back of page.

I hereby certify that this document and the data contained herein was prepared by me or under my direct supervision.

Jesse E. Fant 10/11/73
SIGNATURE DATE

Registration No. 3230
 Land Surveyor, Professional Engineer
 County Surveyor, County Engineer

OFFICE OF THE REGISTER OF DEEDS
 County of Yellow Medicine

I hereby certify that this document was filed in the Reg. of Deeds office at 10:10 A.M. on the 11 day of January A.D., 19 74

Register of Deeds Norman J. Opdahl
 By Ray Nerdahl, Deputy
 DOCUMENT NO. 162727

Statement of Evidence: NORTHEAST CORNER SECTION 22, T114N, R40W

The original Public Land Survey was run in 1864 and a wood post was set in a mound with pits to mark the corner.

In 1888 George E. Olds placed a stone at the corner in mound with pits.

In 1891 Jonah Peterman found the stone in place.

In 1901 John Norgaard, County Surveyor, found the stone in government mound which was still visible and placed a 6 inch x 6 inch x 24 inch jasper monument to perpetuate the corner.

In 1941 and 1965 the Yellow Medicine County Highway Department found the monument in place. On December 15, 1970, the Minnesota Highway Department found the monument at centerline of a north-south road, a road west, and a ditch east.

An analysis of the record data dating to the original monument provides a continuous chain of perpetuation of the original Public Land Survey corner.

For details of survey analysis and 1972 electronic survey measurements, see Survey Report for S.P. 4203 and 8701 on file in the Surveys Section, Minnesota Highway Department, Willmar, Minnesota.