

CERTIFICATE OF LOCATION OF GOVERNMENT CORNER

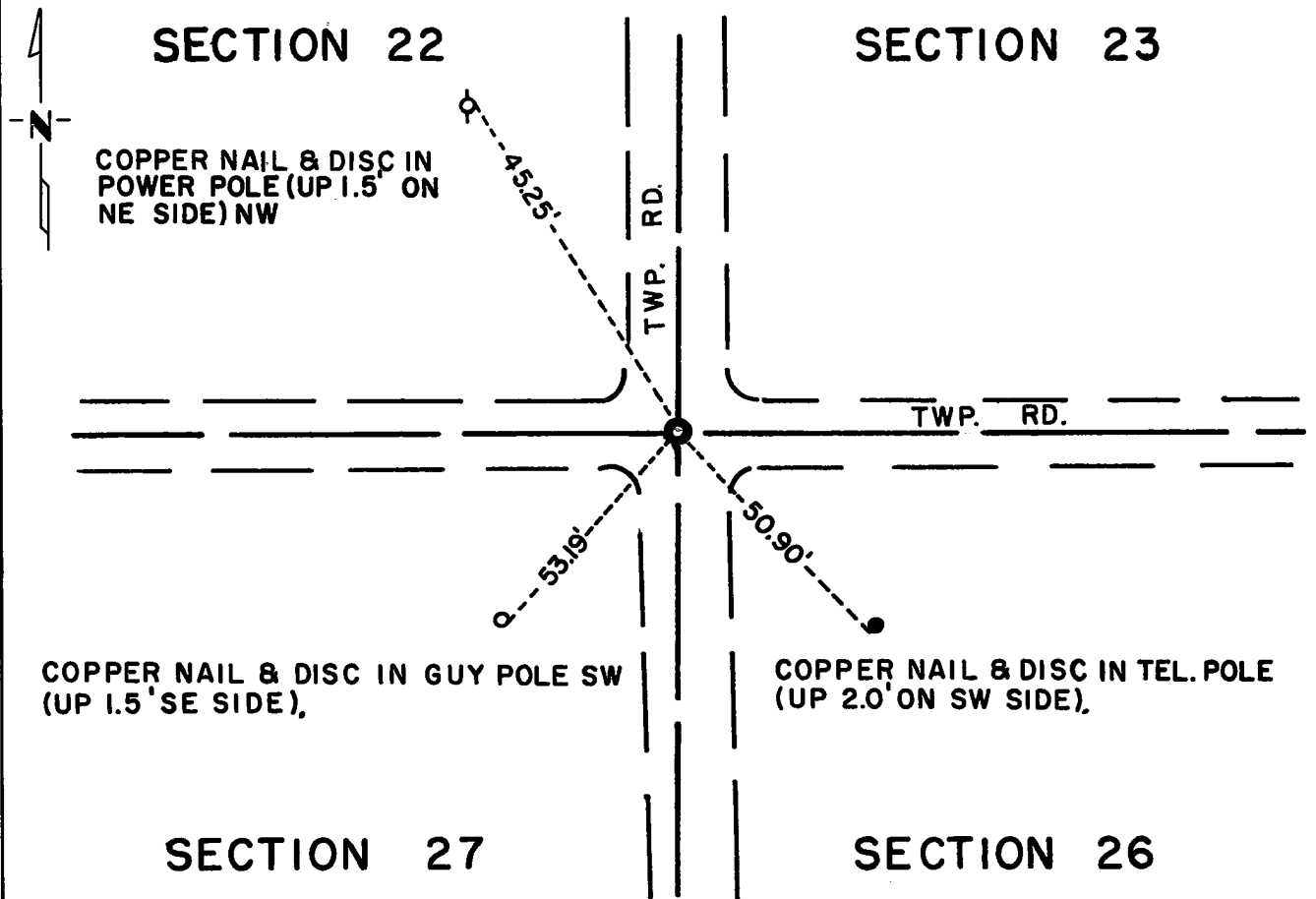
Northeast Corner of Section 27, Township 114N, Range 40W, 5th P.M.

STATE OF MINNESOTA, County of Yellow Medicine

At the corner location shown on the sketch:

- On Dec. 18, 1970 found a 6 inch x 6 inch x 24 inch jasper monument (down 18 inches)
DATE
- left monument as found, lowered monument, removed monument (explain)
- On Aug. 9, 1972 placed a Minnesota Highway Department cast iron monument over
DATE
jasper monument (down 0.15 feet)

SKETCH OF REFERENCE TIES



Statement of evidence relative to this corner location is on back of page.

I hereby certify that this document and the data contained herein was prepared by me or under my direct supervision.

Jesse E. Fant 10/11/73
SIGNATURE DATE

Registration No. 3230

- Land Surveyor, Professional Engineer
- County Surveyor, County Engineer

OFFICE OF THE REGISTER OF DEEDS
County of Yellow Medicine

I hereby certify that this document was filed in the Reg. of Deeds office at 10:15 A.M. on the 11 day of January A.D., 19 74

Register of Deeds Norman J. Opdahl

By Kay Nordahl, Deputy

DOCUMENT NO. 162728

Statement of Evidence: NORTHEAST CORNER SECTION 27, T114N, R40W

The original Public Land Survey was run in 1864 and a wood post was set in a mound with pits to mark the corner.

In 1889 Jonah Peterman stated that old residents showed him the mound with pits to mark the corner.

In 1901, John Norgaard, County Surveyor, located the corner at the intersection of a road running north-south and a line of improvement east according to testimony of Anderson and Kibbelson who had seen the mound and pits. Norgaard set a 6 inch x 6 inch x 24 inch jasper monument level with the ground.

The Yellow Medicine County Highway Department found the jasper monument, date unknown.

On December 18, 1970 the Minnesota Highway Department found the jasper monument at centerline of north-south road and a P.I. of east-west road.

An analysis of the record data dating to the original corner provides a continuous chain of perpetuation of the original Public Land Survey corner.

For details of survey analysis and 1972 electronic survey measurements, see Survey Report for S.P. 4203 and 8701 on file in the Surveys Section, Minnesota Highway Department, Willmar, Minnesota.