

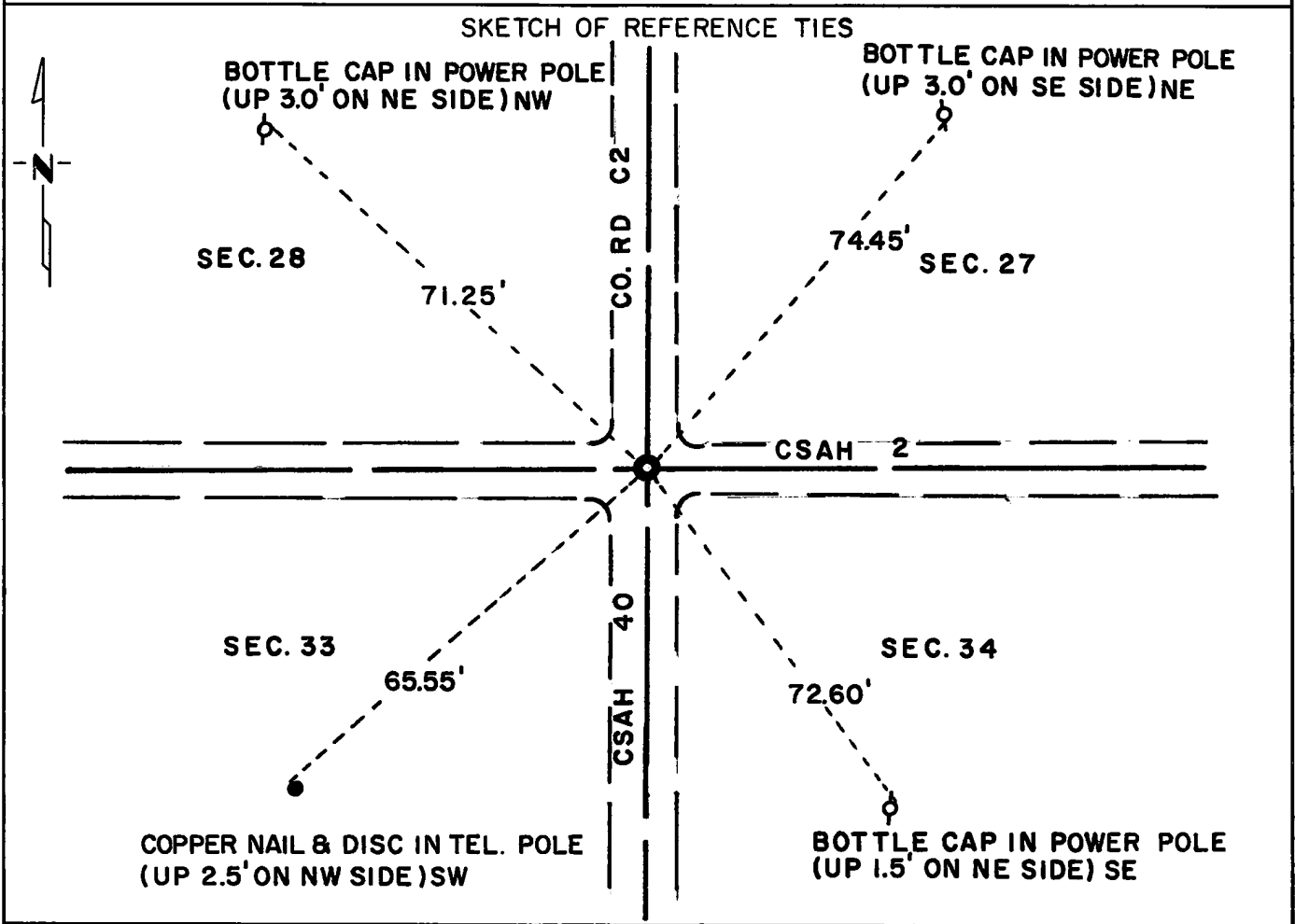
CERTIFICATE OF LOCATION OF GOVERNMENT CORNER

Northeast Corner of Section 33, Township 114N, Range 40W, 5th P.M.

STATE OF MINNESOTA, County of Yellow Medicine

At the corner location shown on the sketch:

- On Sept. 28, 1971 found a Jasper monument down 1.3 feet, and a railroad spike
DATE
down 2 inches
 - left monument as found, lowered monument, removed monument (explain)
- On Aug. 25, 1972 placed a Minnesota Highway Department cast iron monument
DATE
(flush)



Statement of evidence relative to this corner location is on back of page.

I hereby certify that this document and the data contained herein was prepared by me or under my direct supervision.

Jesse E. Fant 10/12/73
SIGNATURE DATE

Registration No. 3230
 Land Surveyor, Professional Engineer
 County Surveyor, County Engineer

OFFICE OF THE REGISTER OF DEEDS
 County of Yellow Medicine

I hereby certify that this document was filed in the Reg. of Deeds office at 10:20 A.M. on the 11 day of January A.D., 19 74

Register of Deeds Norman J. Opdahl
 By Kay Nerdahl, Deputy
 DOCUMENT NO. 162729

Statement of Evidence: NORTHEAST CORNER SECTION 33, T114N, R40W

The original Public Land Survey was run in 1864 and a wood post was set in a mound with pits to mark the corner.

In 1901, John Norgaard, County Surveyor, found the stake in the government mound and placed a 6 inch x 6 inch x 24 inch jasper monument to perpetuate the corner.

In 1916, John Norgaard located the monument.

In 1941 and 1966, the Yellow Medicine County Highway Department found the monument.

On September 28, 1971 the Minnesota Highway Department found the monument in place.

An analysis of the record data dating to the original corner provides a continuous chain of perpetuation of the original Public Land Survey corner.

For details of survey analysis and 1972 electronic survey measurements, see Survey Report for S.P. 4203 and 8701 on file in the Surveys Section, Minnesota Highway Department, Willmar, Minnesota.