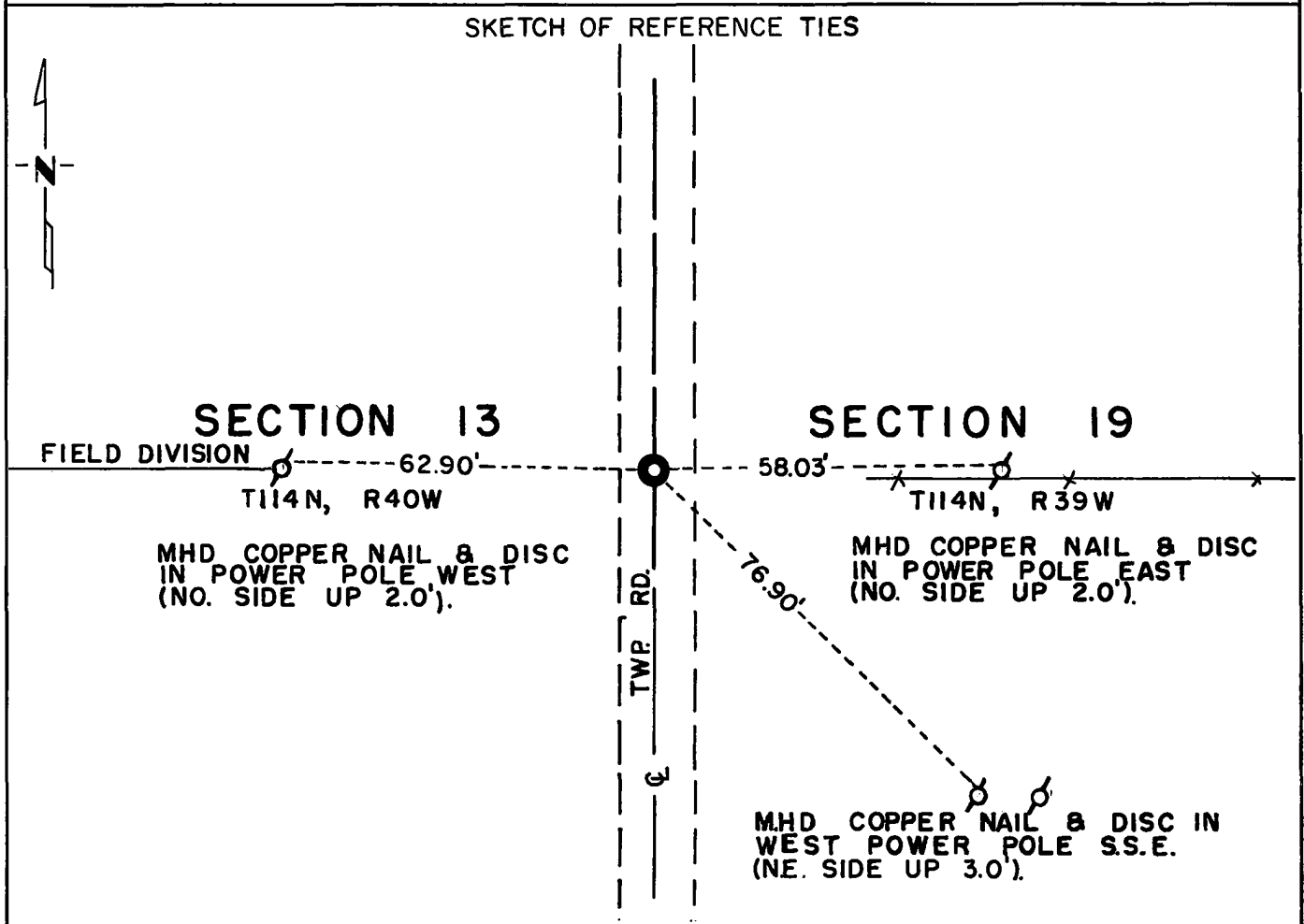


CERTIFICATE OF LOCATION OF GOVERNMENT CORNER

East Quarter _____ Corner of Section 13, Township 114N, Range 40W, 5th P.M.
 STATE OF MINNESOTA, County of Yellow Medicine

At the corner location shown on the sketch:

- On April 16, 1978 found a 12 inch x 12 inch x 4 inch field stone
DATE
- left monument as found, lowered monument, removed monument (explain)
- On April 18, 1973 placed a Minnesota Highway Department cast iron monument over
DATE
stone (down 0.3 feet)



Statement of evidence relative to this corner location is on back of page.

I hereby certify that this document and the data contained herein was prepared by me or under my direct supervision.

Jesse E. Fant 10/12/73
SIGNATURE DATE
 Registration No. 3230
 Land Surveyor, Professional Engineer
 County Surveyor, County Engineer

OFFICE OF THE REGISTER OF DEEDS
 County of Yellow Medicine

I hereby certify that this document was filed in the Reg. of Deeds office at 10:25 A.M. on the 11 day of January A.D., 19 74
 Register of Deeds Norman J. Opdahl
 By Kay Nordahl, Deputy
 DOCUMENT NO. 162730

Statement of Evidence: EAST QUARTER CORNER SECTION 13, T114N, R40W

The original Public Land Survey was run in 1858 and a wood post was set in a mound with pits and deposits of coal to mark the corner.

In 1884, Jonah Peterman found the original post and placed a stone to mark the corner. In 1890, Peterman found the stone.

On April 16, 1973 the Minnesota Highway Department excavated and found a 12 inch x 12 inch x 4 inch field stone on centerline of north-south road and property lines to the east and west.

An analysis of the record data dating to the original monument provides a continuous chain of perpetuation of the original Public Land Survey corner.

For details of survey analysis and 1972 electronic survey measurements, see Survey Report for S.P. 4203 and 8701 on file in the Surveys Section, Minnesota Highway Department, Willmar, Minnesota.