

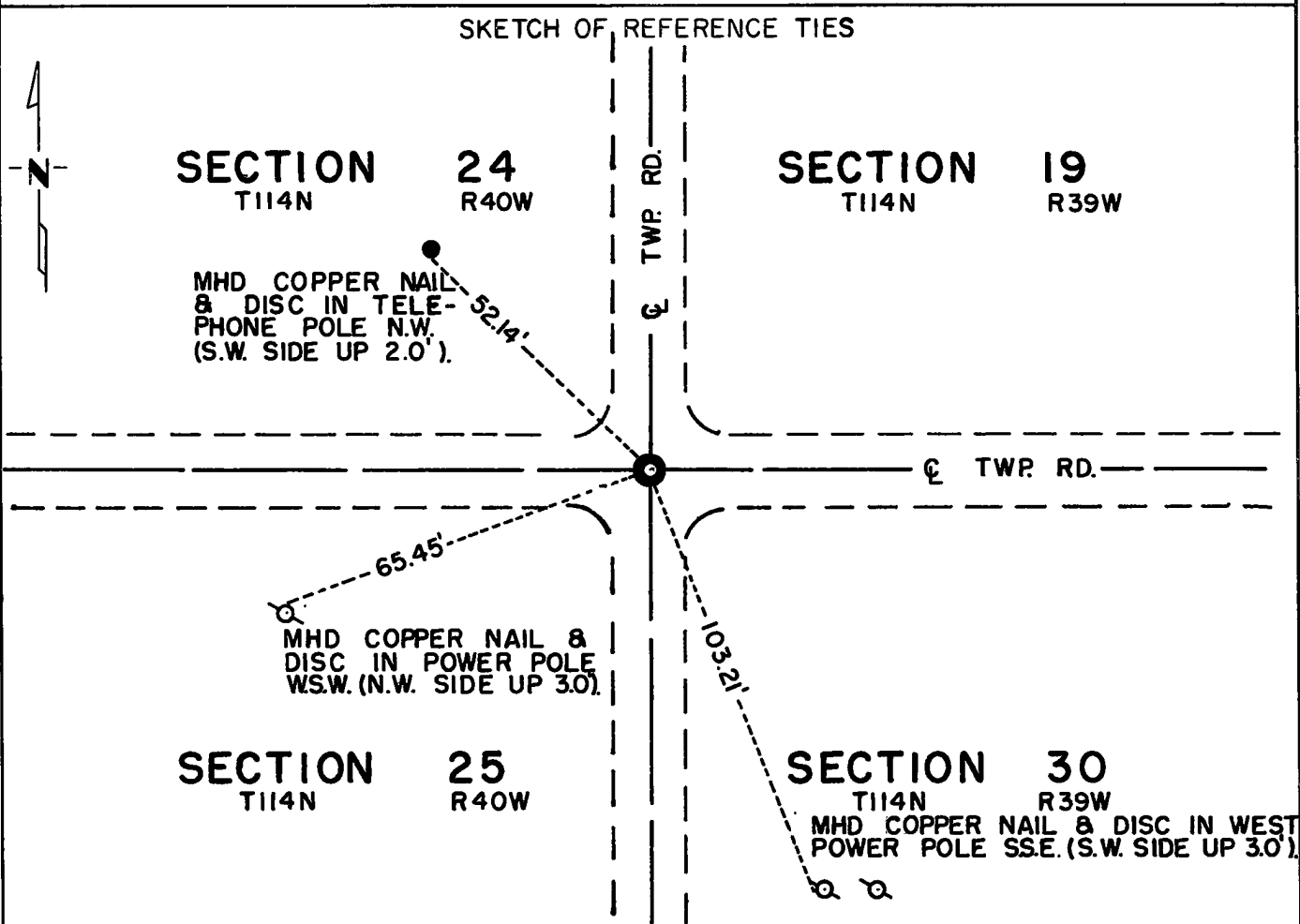
# CERTIFICATE OF LOCATION OF GOVERNMENT CORNER

Northeast Corner of Section 25, Township 114N, Range 40W, 5th P.M.

STATE OF MINNESOTA, County of Yellow Medicine

At the corner location shown on the sketch:

- On Oct. 18, 1971 found a 6 inch x 6 inch x 24 inch jasper monument with pieces of iron on top (down 3 feet)  
 left monument as found,  lowered monument,  removed monument (explain)
- On Aug. 9, 1972 placed a Minnesota Highway Department cast iron monument over jasper monument (down 0.1 feet)



Statement of evidence relative to this corner location is on back of page.

I hereby certify that this document and the data contained herein was prepared by me or under my direct supervision.

Jesse E. Fant 10/12/73  
SIGNATURE DATE

Registration No. 3230

- Land Surveyor,  Professional Engineer
- County Surveyor,  County Engineer

OFFICE OF THE REGISTER OF DEEDS  
County of Yellow Medicine

I hereby certify that this document was filed in the Reg. of Deeds office at 10:30 A.M. on the 11 day of January A.D., 1974

Register of Deeds Norman J. Opdahl

By Kay Nordahl, Deputy

DOCUMENT NO. 162731

Statement of Evidence:     NORTHEAST CORNER SECTION 25, T114N, R40W

The original Public Land Survey was run in 1858 and a wood post was set in a mound with pits to mark the corner.

In 1896 John Norgaard, County Surveyor, set a stone in the mound with pits.

In 1901, Norgaard found the stone and replaced it with a 6 inch x 6 inch x 24 inch jasper monument.

In 1949, the Yellow Medicine County Highway Department found the monument and placed pieces of iron over it.

On October 18, 1971, the Minnesota Highway Department excavated 4 feet x 6 feet x 3.5 feet and found the jasper monument with pieces of iron on top at centerline of north-south road and 2 feet south of centerline of east-west road.

An analysis of the record data dating to the original monument provides a continuous chain of perpetuation of the original Public Land Survey corner.

For details of survey analysis, photographs taken during excavation, and 1972 electronic survey measurements, see Survey Report for S.P. 4203 and 8701 on file in the Surveys Section, Minnesota Highway Department, Willmar, Minnesota.