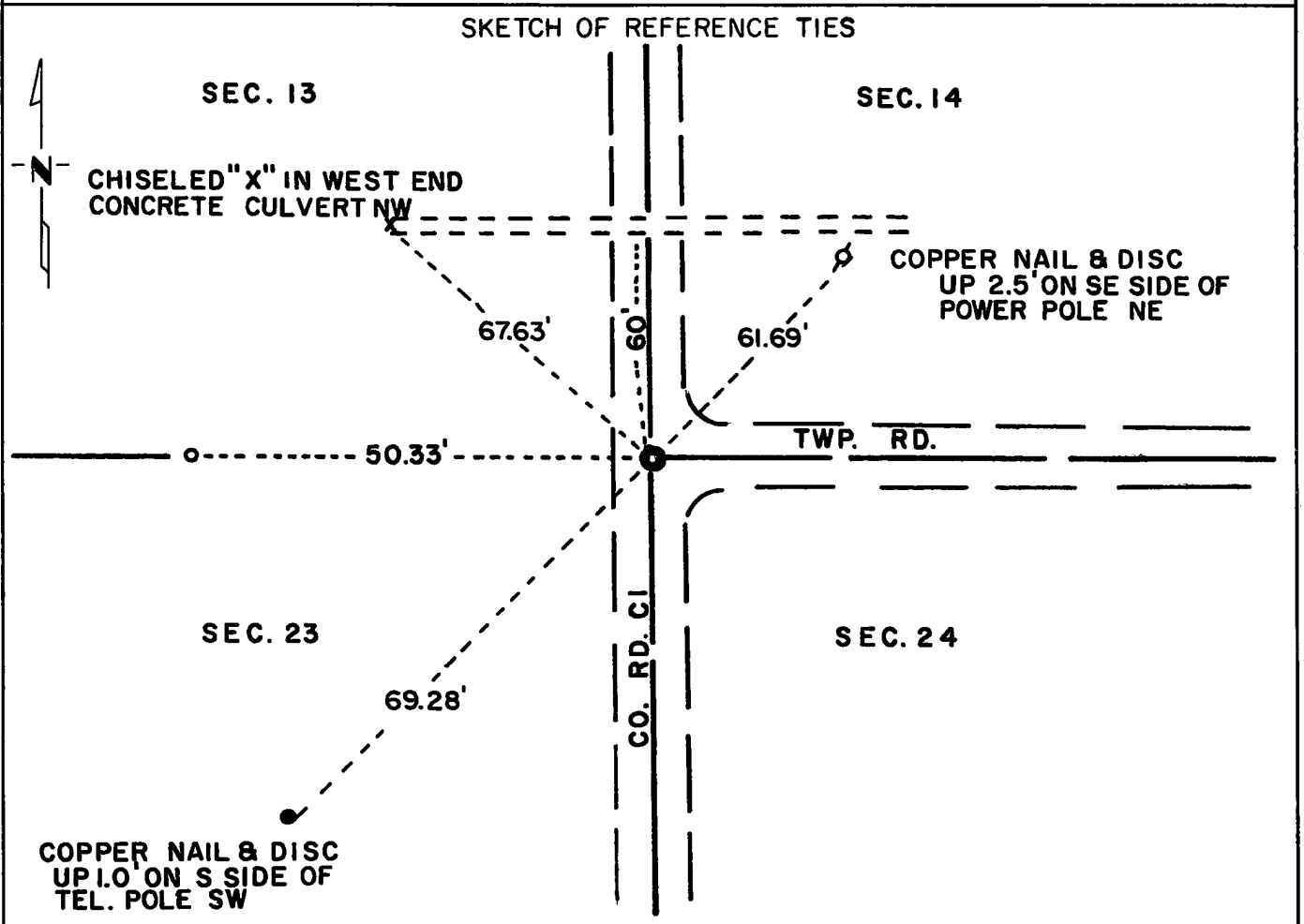


CERTIFICATE OF LOCATION OF GOVERNMENT CORNER

Northeast Corner of Section 23, Township 114N, Range 40W, 5th P.M.
 STATE OF MINNESOTA, County of Yellow Medicine

At the corner location shown on the sketch:

- On Sept. 28, 1971 found a 6 inch x 6 inch x 24 inch jasper monument and wood post.
DATE
- left monument as found, lowered monument, removed monument (explain)
- On Aug. 9, 1972 placed a Minnesota Highway Department cast iron monument over
DATE
wood post (down 0.10 feet)



Statement of evidence relative to this corner location is on back of page.

I hereby certify that this document and the data contained herein was prepared by me or under my direct supervision.

Jesse E. Fant 10/12/73
SIGNATURE DATE

Registration No. 3230

- Land Surveyor, Professional Engineer
- County Surveyor, County Engineer

OFFICE OF THE REGISTER OF DEEDS
 County of Yellow Medicine

I hereby certify that this document was filed in the Reg. of Deeds office at 10:35 A.M. on the 11 day of January A.D., 1974

Register of Deeds Norman J. Opdahl

By Kay Nerdahl, Deputy

DOCUMENT NO. 162732

Statement of Evidence: NORTHEAST CORNER SECTION 23, T114N, R40W

The original Public Land Survey was run in 1864 and a wood post was set in a mound with pits to mark the corner.

In 1901 John Norgaard, County Surveyor, found a stone and iron bolt that was set by adjoining farm owners when the mound was still visible. Norgaard set a 6 inch x 6 inch x 24 inch jasper monument.

The Yellow Medicine County Highway Department assumed the corner position.

On September 28, 1971 the Minnesota Highway Department excavated and found the jasper monument lying on its side. On the east edge of the monument was an old wood post. The post is at centerline of a road to the east and a ditch west and is the P.I. of a north-south road.

An analysis of the record data and 1972 survey measurements indicates that the post is in the accepted position of the original Public Land Survey corner.

For details of survey analysis, photographs taken during excavation, and 1972 electronic survey measurements, see Survey Report for S.P. 4203 and 8701 on file in the Surveys Section, Minnesota Highway Department, Willmar, Minnesota.