

CERTIFICATE OF LOCATION OF GOVERNMENT CORNER

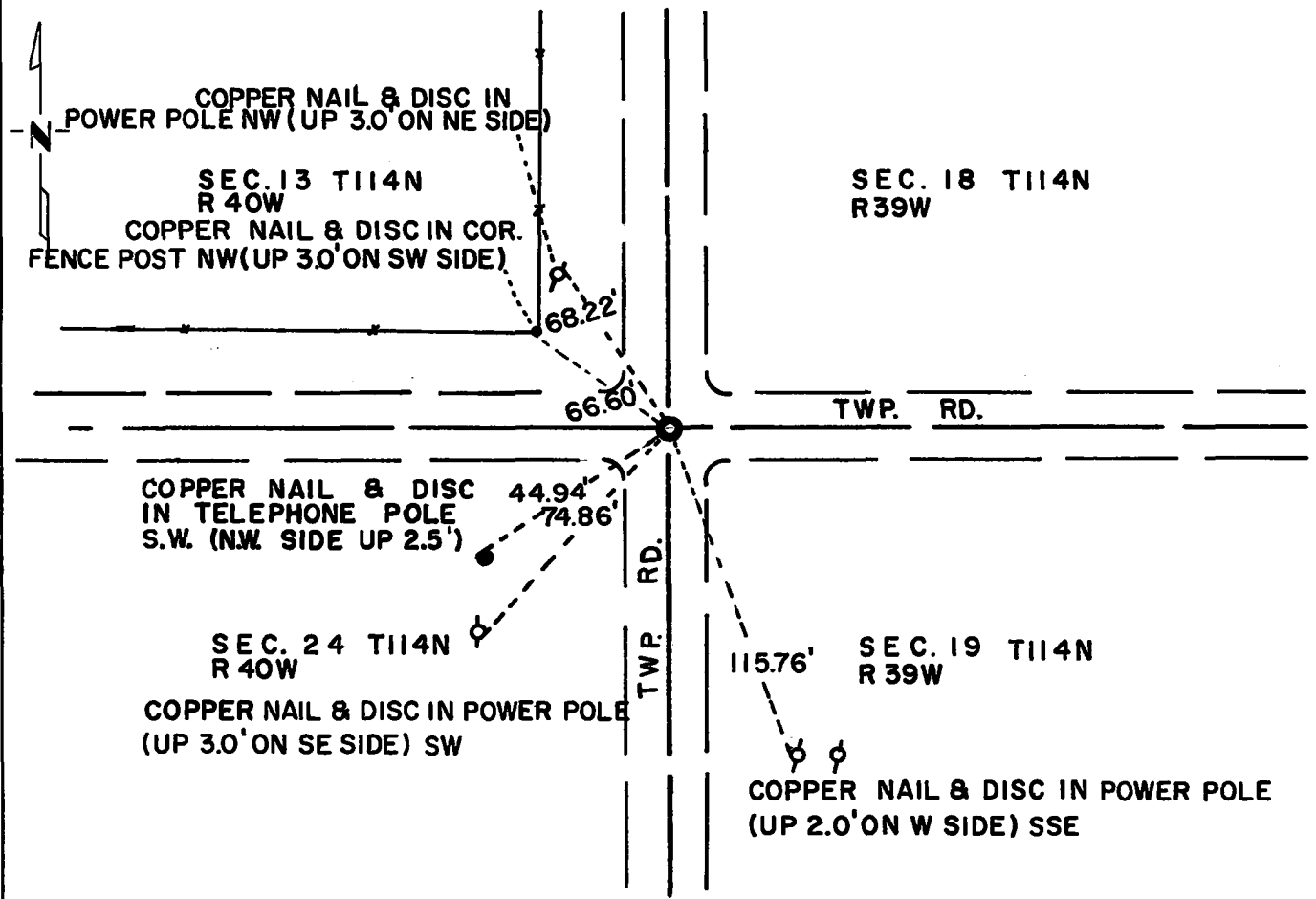
Northeast Corner of Section 24, Township 114N, Range 40W, 5th P.M.

STATE OF MINNESOTA, County of Yellow Medicine

At the corner location shown on the sketch:

- On Oct. 21, 1971 found a 6 inch x 6 inch x 24 inch jasper monument (down 2.5 feet)
DATE
- left monument as found, lowered monument, removed monument (explain)
- On Aug. 9, 1972 placed a Minnesota Highway Department cast iron monument over
DATE
jasper monument (down 0.10 feet)

SKETCH OF REFERENCE TIES



Statement of evidence relative to this corner location is on back of page.

I hereby certify that this document and the data contained herein was prepared by me or under my direct supervision.

Jesse S. Fant 10/12/73
SIGNATURE DATE

Registration No. 3230
 Land Surveyor, Professional Engineer
 County Surveyor, County Engineer

OFFICE OF THE REGISTER OF DEEDS
County of Yellow Medicine

I hereby certify that this document was filed in the Reg. of Deeds office at 10:40 A.M. on the 11 day of January A.D., 19 74

Register of Deeds Norman J. Opdahl
By Kay Nordahl, Deputy
DOCUMENT NO. 162733

Statement of Evidence: NORTHEAST CORNER SECTION 24, T114N, R40W

The original Public Land Survey was run in 1858 and a wood post was set in a mound with pits to mark the corner.

In 1884 Jonah Peterman and adjoining landowners set a stone in the mound with pits.

In 1901 John Norgaard, County Surveyor, found the stone set by Peterman and set a 6 inch x 6 inch x 24 inch jasper monument to perpetuate the original corner.

In 1941 and 1965 the Yellow Medicine County Highway Department found the monument in place.

On October 21, 1971 the Minnesota Highway Department found the monument at the centerline of east-west and north-south roads.

An analysis of record data dating to the original monument provides a continuous chain of perpetuation of the original Public Land Survey corner.

For details of survey analysis, photographs taken during excavation, and 1972 electronic survey measurements, see Survey Report for S.P. 4203 and 8701 on file in the Surveys Section, Minnesota Highway Department, Willmar, Minnesota.