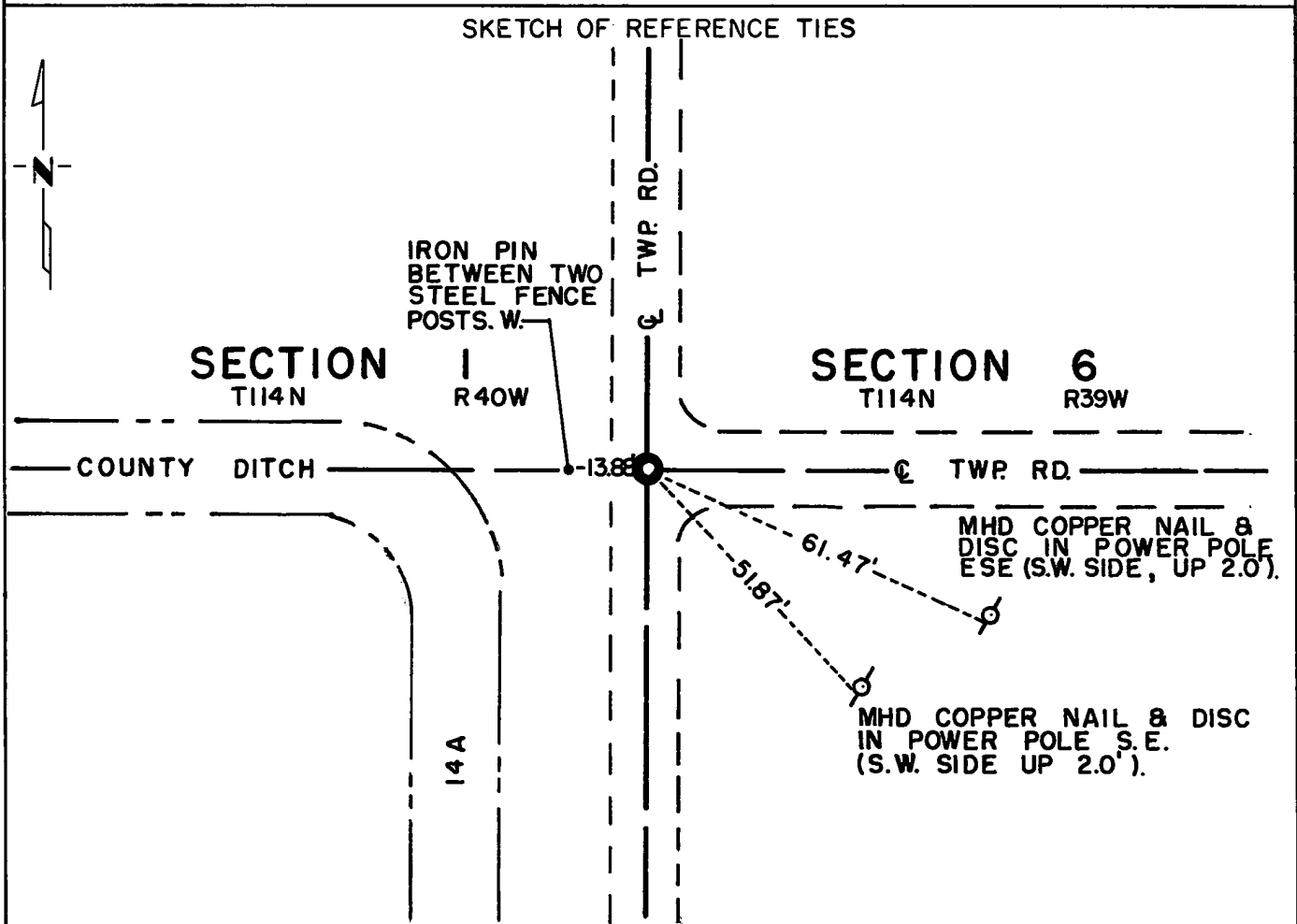


CERTIFICATE OF LOCATION OF GOVERNMENT CORNER

East Quarter _____ Corner of Section 1, Township 114N, Range 40W, 5th P.M.
 STATE OF MINNESOTA, County of Yellow Medicine

At the corner location shown on the sketch:

- On Sept. 30, 1971 found a large field stone with wood stake on top, down 3.2 feet
DATE
- left monument as found, lowered monument, removed monument (explain)
- On Aug. 25, 1972 placed a Minnesota Highway Department cast iron monument
DATE over stone (down 0.3 feet)



Statement of evidence relative to this corner location is on back of page.

I hereby certify that this document and the data contained herein was prepared by me or under my direct supervision.

Jesse E. Fant 10/12/73
SIGNATURE DATE
 Registration No. 3230
 Land Surveyor, Professional Engineer
 County Surveyor, County Engineer

OFFICE OF THE REGISTER OF DEEDS
 County of Yellow Medicine

I hereby certify that this document was filed in the Reg. of Deeds office at 10:45 A.M. on the 11 day of January A.D., 1974
 Register of Deeds Norman J. Opdahl
 By Kay Nordahl, Deputy
 DOCUMENT NO. 162734

Statement of Evidence: EAST QUARTER CORNER SECTION 1, T114N, R40W

The original Public Land Survey was run in 1858 and a post was set in a mound with pits to mark the corner.

In October, 1914, John Norgaard, County Surveyor, set a stone on line and proportionate distance between section corners.

Stone was located by Norgaard date unknown.

In 1934, Norgaard found the stone with a wood stake next to it.

On September 30, 1971 the Minnesota Highway Department found a large field stone with a stake on top at centerline of north-south road and road to the east.

An analysis of the record data compared to 1972 field measurements indicates that the stone has marked the corner for nearly 60 years and is accepted as the location of the Public Land Survey corner.

For details of survey analysis, photographs taken during excavation, and 1972 electronic survey measurements, see Survey Report for S.P. 4203 and 8701 on file in the Surveys Section, Minnesota Highway Department, Willmar, Minnesota.