

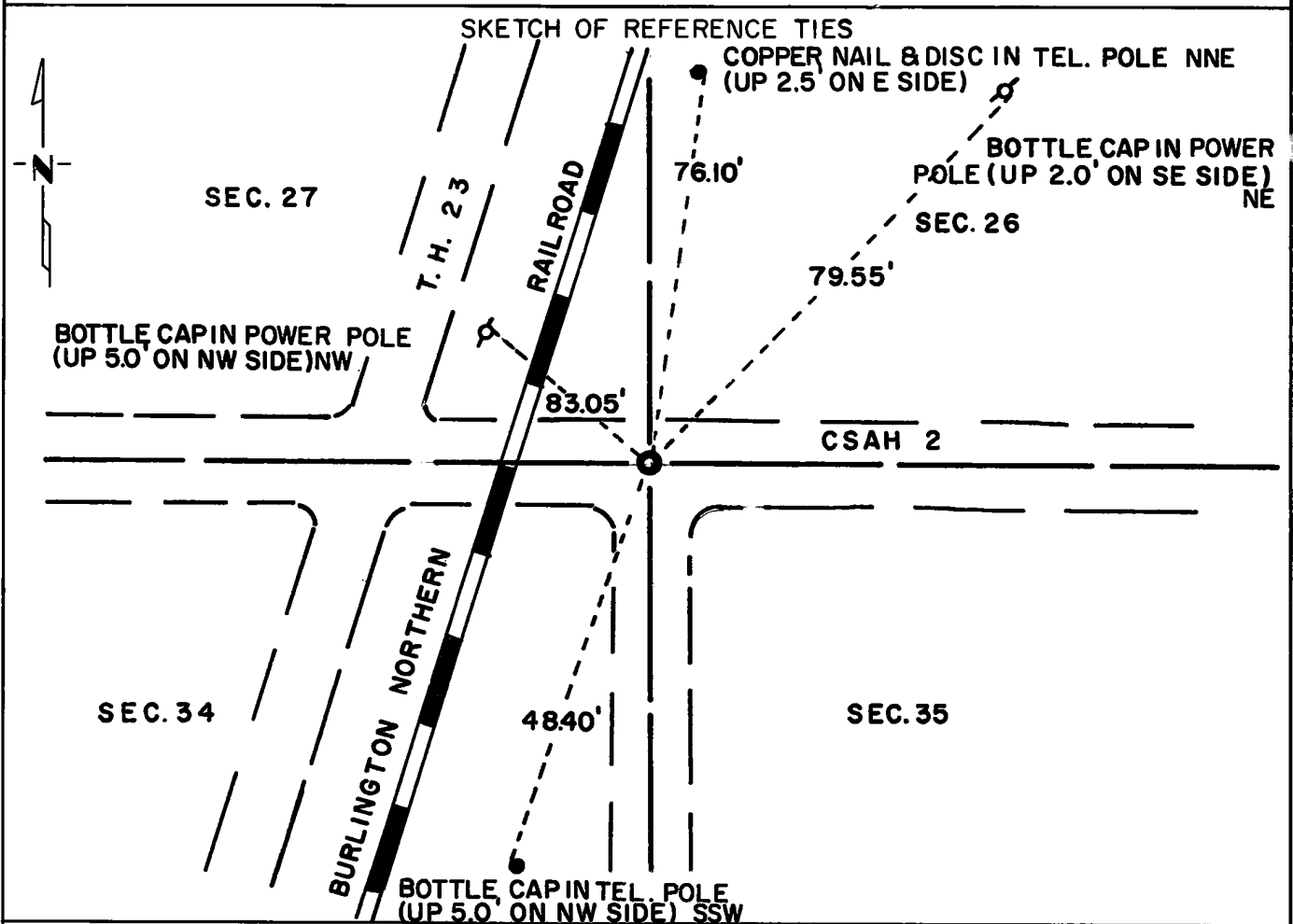
CERTIFICATE OF LOCATION OF GOVERNMENT CORNER

Northeast Corner of Section 34, Township 114N, Range 40W, 5th P.M.

STATE OF MINNESOTA, County of Yellow Medicine

At the corner location shown on the sketch:

- On Aug. 9, 1972 found a County iron pin
DATE
- left monument as found, lowered monument, removed monument (explain)
- On Aug. 9, 1972 placed a Minnesota Highway Department cast iron monument in
DATE place of iron pin (down 0.25 feet).



Statement of evidence relative to this corner location is on back of page.

I hereby certify that this document and the data contained herein was prepared by me or under my direct supervision.

Jesse E. Fant 10/12/73
SIGNATURE DATE

Registration No. 3230
 Land Surveyor, Professional Engineer
 County Surveyor, County Engineer

OFFICE OF THE REGISTER OF DEEDS
 County of Yellow Medicine

I hereby certify that this document was filed in the Reg. of Deeds office at 10:50 A.M. on the 11 day of January A.D., 1974

Register of Deeds Norman J. Opdahl
 By Kay Nordahl, Deputy
 DOCUMENT NO. 162735

Statement of Evidence: NORTHEAST CORNER SECTION 34, T114N, R40W

The original Public Land Survey was run in 1864 and a wood post was set in a mound with pits to mark the corner.

In 1889, Jonah Peterman, set a stone in the corner by an affidavit of J. B. Johnson and Sever Burr Jr.

In 1901 John Norgaard, County Surveyor, found the stone set by Peterman and placed a 6 inch x 6 inch x 24 inch Jasper monuemnt to perpetuate the corner location.

In 1916, Norgaard located the Jasper monument.

The Yellow Medicine County Highway Department found the Jasper monument, date unknown, and placed a 4 foot steel post on top of it.

Oscar Olson replaced the post with an iron pin during a grading job.

In 1966 and 1971 the Yellow Medicine County Highway Department excavated, found the Jasper monument, and placed an iron pin over it.

An analysis of the record data dating to the original monument provides a continuous chain of perpetuation of the original Public Land Survey corner.

For details of survey analysis and 1972 electronic survey measurements, see Survey Report for S.P. 4203 and 8701 on file in the Surveys Section, Minnesota Highway Department, Willmar, Minnesota.