

# CERTIFICATE OF LOCATION OF GOVERNMENT CORNER

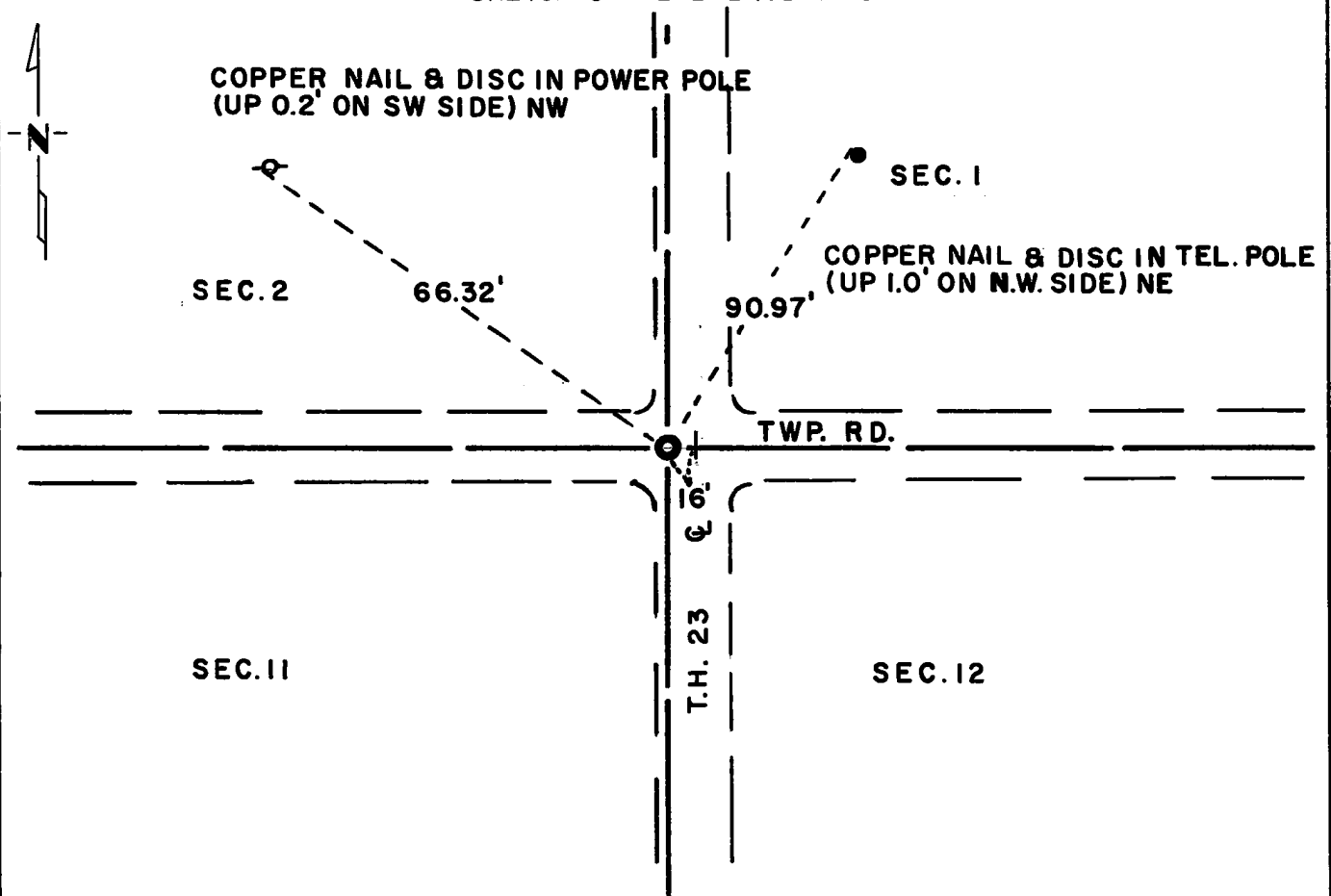
Northeast Corner of Section 11, Township 114N, Range 40W, 5th - P.M.

STATE OF MINNESOTA, County of Yellow Medicine

At the corner location shown on the sketch:

- On Sept. 29, 1971 found a 1 inch x 2 inch x 12 inch wood stake with pieces of jasper around it.  
DATE
- left monument as found,  lowered monument,  removed monument (explain)
- On Sept. 1, 1972 placed a Minnesota Highway Department cast iron monument,  
DATE down 0.2 feet.

SKETCH OF REFERENCE TIES



Statement of evidence relative to this corner location is on back of page.

I hereby certify that this document and the data contained herein was prepared by me or under my direct supervision.

Jesse E. Fant 10/12/73  
SIGNATURE DATE

Registration No. 3230  
 Land Surveyor,  Professional Engineer  
 County Surveyor,  County Engineer

OFFICE OF THE REGISTER OF DEEDS  
 County of Yellow Medicine

I hereby certify that this document was filed in the Reg. of Deeds office at 10:55 A.M. on the 11 day of January A.D., 19 74

Register of Deeds Norman J. Opdahl  
 By Kay Nordahl, Deputy  
 DOCUMENT NO. 162736

Statement of Evidence: NORTHEAST CORNER SECTION 11, T114N, R40W

The original Public Land Survey was run in 1864 and a wood post was set in a mound with pits to mark the corner.

In 1901, John Norgaard, County Surveyor, re-established the corner by lost methods, and set a 6 inch x 6 inch x 24 inch Jasper monument to mark the corner.

In 1930 the Yellow Medicine County Highway Department found the monument in place.

In 1940 the stone was found during a survey for Trunk Highway 23 by the Minnesota Highway Department.

On September 29, 1971 the Minnesota Highway Department did not find the Jasper monument, but did find a 1 inch x 2 inch x 12 inch wood stake at the location of the corner described on the Trunk Highway 23 right of way map. There were broken pieces of jasper granite around the stake.

An analysis of the record data compared to 1972 field measurements indicates that the stake is in the accepted location of the Public Land Survey corner.

For details of survey analysis and 1972 electronic survey measurements, see Survey Report for S.P. 4203 and 8701 on file in the Surveys Section, Minnesota Highway Department, Willmar, Minnesota.