

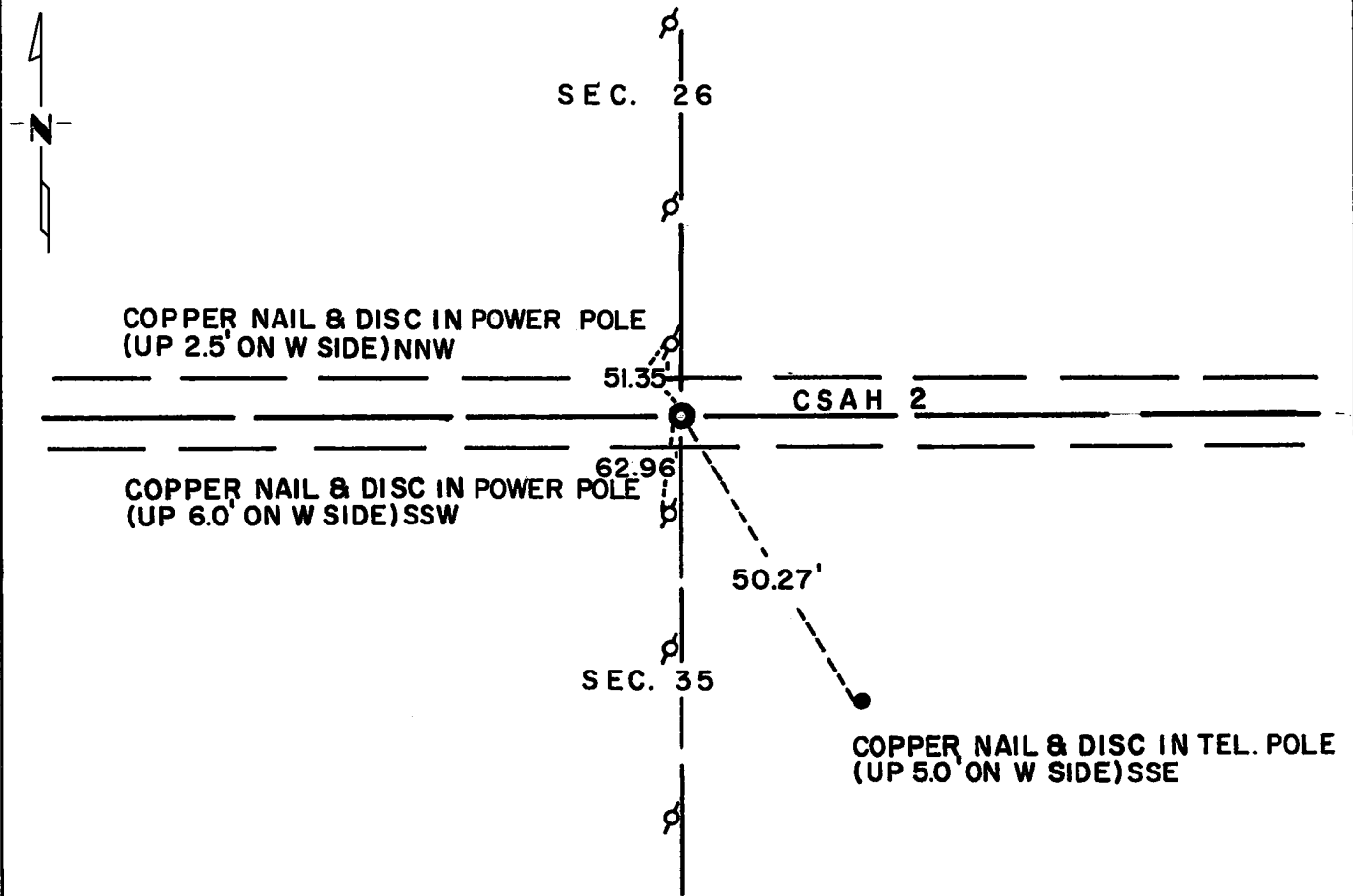
CERTIFICATE OF LOCATION OF GOVERNMENT CORNER

North Quarter Corner of Section 35, Township 114N, Range 40W, 5th P.M.
 STATE OF MINNESOTA, County of Yellow Medicine

At the corner location shown on the sketch:

- On Oct. 18, 1971 found a Field stone and wood hub. (down 2.5 feet)
DATE
- left monument as found, lowered monument, removed monument (explain)
- On Aug. 9, 1972 placed a Minnesota Highway Department cast iron monument over
DATE
field stone. (down 0.25 feet)

SKETCH OF REFERENCE TIES



Statement of evidence relative to this corner location is on back of page.

I hereby certify that this document and the data contained herein was prepared by me or under my direct supervision.

Jesse E. Fant 10/12/73
SIGNATURE DATE

Registration No. 3230
 Land Surveyor, Professional Engineer
 County Surveyor, County Engineer

OFFICE OF THE REGISTER OF DEEDS
 County of Yellow Medicine

I hereby certify that this document was filed in the Reg. of Deeds office at 11:00 A.M. on the 11 day of January A.D., 19 74

Register of Deeds Norman J. Opdahl
 By Kay Nordahl, Deputy
 DOCUMENT NO. 162737

Statement of Evidence: NORTH QUARTER CORNER SECTION 35, T114N, R40W

The original Public Land Survey was run in 1864 and a wood post was set in a mound with pits to mark the corner.

On June 16, 1910, John Norgaard, County Surveyor, set a stone on line and equal distance between section corners.

An affidavit dated October 17, 1910 from farmers Hellie and Berg, states that a stone, 20.5 feet north and 55.5 feet east of Norgaard's stone was the place where the government corner used to be.

On October 18, 1971 the Minnesota Highway Department found the stone with a wood hub alongside at centerline of east-west road and 3 feet east of north-south pole line, as specified in the affidavit.

An analysis of the record data dating to the original corner and the 1972 survey measurements indicates that the stone is in agreement with the affidavit which provides a continuous chain of perpetuation of the original Public Land Survey corner.

For details of survey analysis, photographs taken during excavation, and 1972 electronic survey measurements, see Survey Report for S.P. 4203 and 8701 on file in the Surveys Section, Minnesota Highway Department, Willmar, Minnesota.