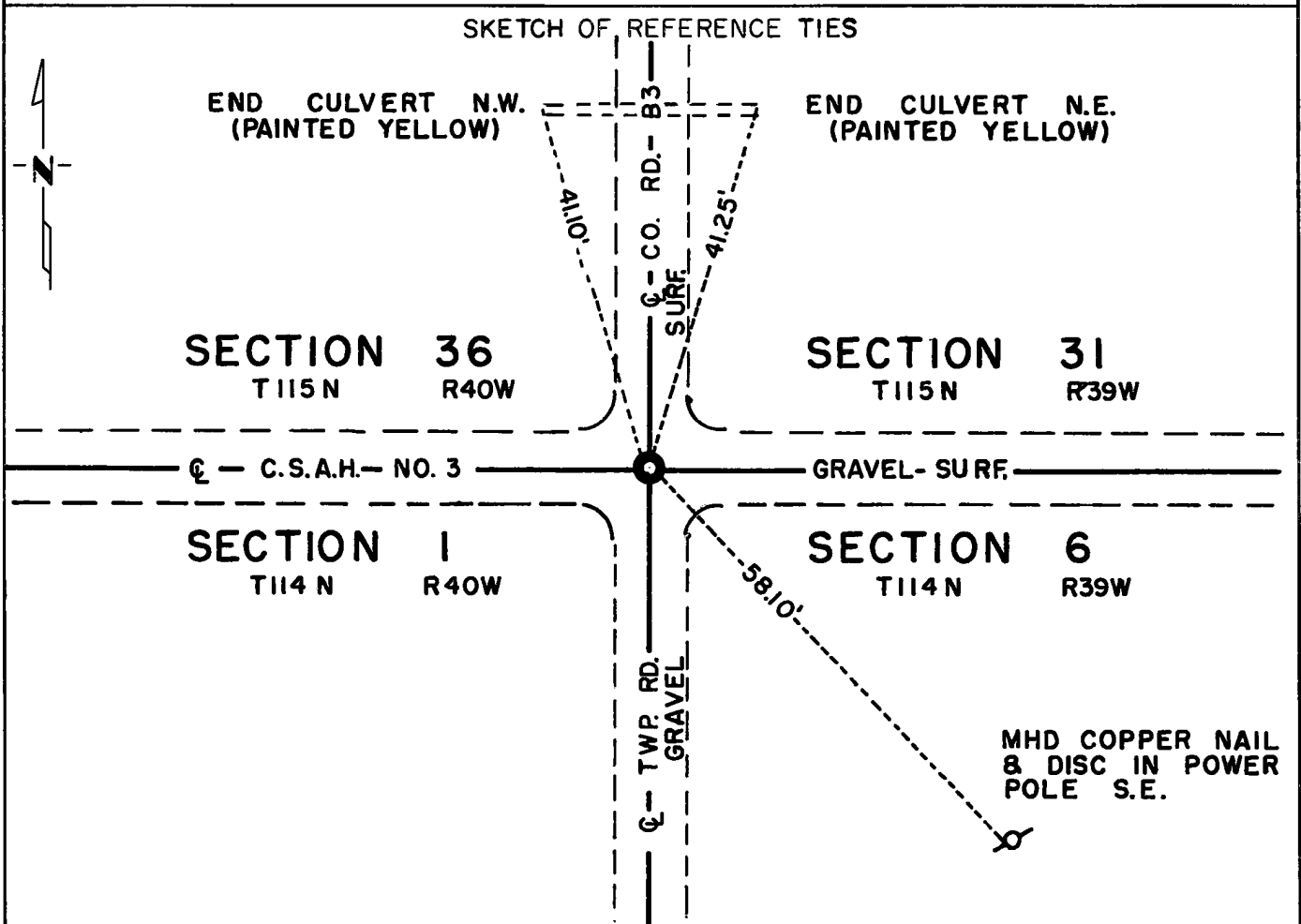


CERTIFICATE OF LOCATION OF GOVERNMENT CORNER

Northeast Corner of Section 1, Township 114N, Range 40W, 5th P.M.
 STATE OF MINNESOTA, County of Yellow Medicine

At the corner location shown on the sketch:

- On Sept. 28, 1971 found a cast iron monument (down 1.5 feet)
DATE
- left monument as found, lowered monument, removed monument (explain)
- On Aug. 25, 1972 placed a Minnesota Highway Department cast iron monument on top
DATE
of found monument.



Statement of evidence relative to this corner location is on back of page.

I hereby certify that this document and the data contained herein was prepared by me or under my direct supervision.

Jesse E. Fant 10/12/73
SIGNATURE DATE

Registration No. 3230
 Land Surveyor, Professional Engineer
 County Surveyor, County Engineer

OFFICE OF THE REGISTER OF DEEDS
 County of Yellow Medicine

I hereby certify that this document was filed in the Reg. of Deeds office at 11:05 A.M. on the 11 day of January A.D., 19 74

Register of Deeds Norman J. Opdahl
 By Kay Nerdahl, Deputy
 DOCUMENT NO. 162738

Statement of Evidence: NORTHEAST CORNER SECTION 1, T114N, R40W

The original Public Land Survey was run in 1858 and a wood post was set in a mound with pits to mark the corner.

In 1897 John Norgaard, County Surveyor, located the corner by proportionate measure, and an iron monument stamped "NE S 1, T114, R40" was set to mark the corner.

In 1929 and 1965, the Yellow Medicine County Highway Department found an iron monument down 1.5 feet at the centerline of north-south road and east-west road.

An analysis of the record data and the location of the corner to property boundaries indicates that the corner is in the accepted location of the Public Land Survey corner.

For details of survey analysis, photographs taken during excavation, and 1972 electronic survey measurements, see Survey Report for S.P. 4203 and 8701 on file in the Surveys Section, Minnesota Highway Department, Willmar, Minnesota.