

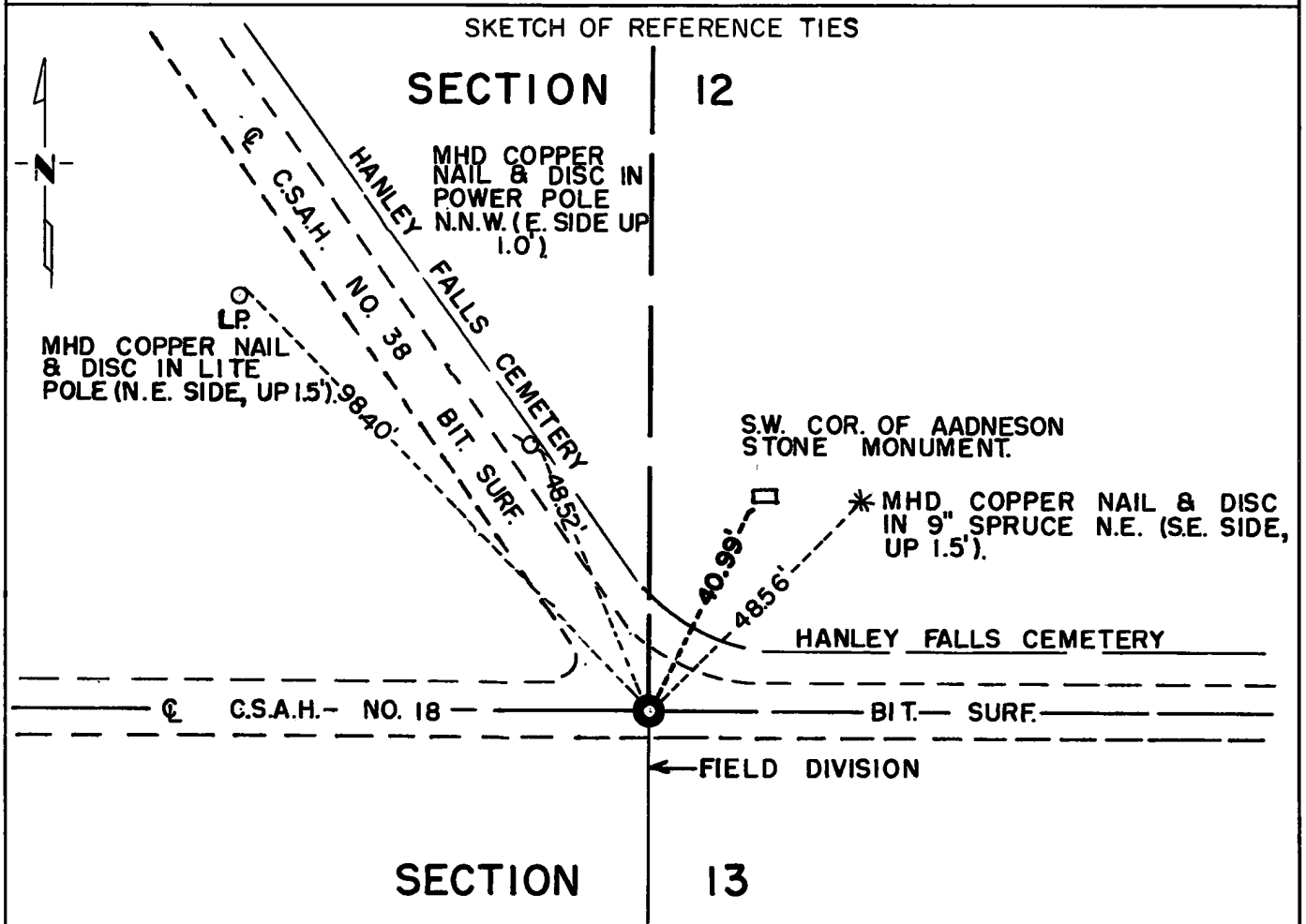
CERTIFICATE OF LOCATION OF GOVERNMENT CORNER

North Quarter Corner of Section 13, Township 114N, Range 40W, 5th P.M.

STATE OF MINNESOTA, County of Yellow Medicine

At the corner location shown on the sketch:

- On _____ found a _____
DATE
- left monument as found, lowered monument, removed monument (explain)
- On 6-6-73 placed a Minnesota Highway Department cast iron monument over
DATE
3/4 inch x 24 inch iron pin (flush)



Statement of evidence relative to this corner location is on back of page.

I hereby certify that this document and the data contained herein was prepared by me or under my direct supervision.

Jesse E. Fant 10/12/73
SIGNATURE DATE

Registration No. 3230

Land Surveyor, Professional Engineer

County Surveyor, County Engineer

OFFICE OF THE REGISTER OF DEEDS
County of Yellow Medicine

I hereby certify that this document was filed in the Reg. of Deeds office at 11:10 A .M. on the 11 day of January A.D., 1974

Register of Deeds Norman J. Opdahl

By Kay Nerdahl, Deputy

DOCUMENT NO. 162739

Statement of Evidence: NORTH QUARTER CORNER SECTION 13, T114N, R40W

The original Public Land Survey was run in 1864 and a wood post was set in a mound with pits to mark the corner.

In 1874, Ole Quam located the corner.

In 1890, Jonah Peterman located the corner.

The Railroad Engineers used this corner in platting Hanley Falls. In 1971, the Minnesota Highway Department excavated 6 feet x 6 feet x 3 feet deep (2 feet below natural ground) at road intersection, but no evidence of monumentation was found.

An analysis of the record data compared to 1972 field measurements and the plat of Hanley Falls indicates the obliterated location of the quarter corner. The obliterated location is on the centerline of an east-west road, a road northwest, on the property lines north-south, and in line with the monuments set in the platting of Hanley Falls.

For details of survey analysis and 1972 electronic survey measurements, see Survey Report for S.P. 4203 and 8701 on file in the Surveys Section, Minnesota Highway Department, Willmar, Minnesota.