

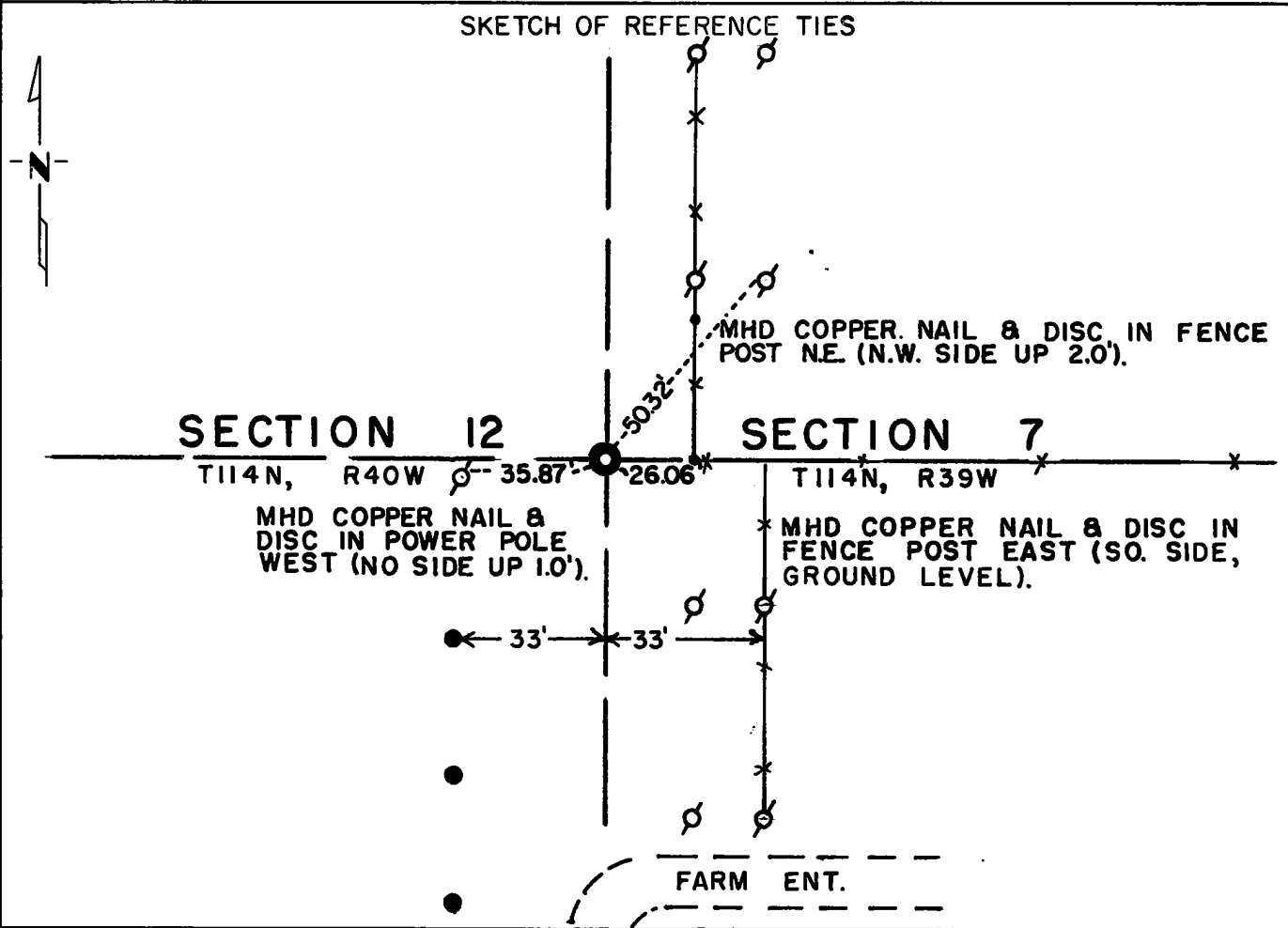
# CERTIFICATE OF LOCATION OF GOVERNMENT CORNER

East Quarter Corner of Section 12, Township 114N, Range 40W, 5th P.M.

STATE OF MINNESOTA, County of Yellow Medicine

At the corner location shown on the sketch:

- On \_\_\_\_\_ found a \_\_\_\_\_  
DATE
- left monument as found,  lowered monument,  removed monument (explain)
- On June 6, 1973 placed a Minnesota Highway Department cast iron monument over  
DATE  
3/4 inch x 24 inch iron pin (down 0.6 feet)



Statement of evidence relative to this corner location is on back of page.

I hereby certify that this document and the data contained herein was prepared by me or under my direct supervision.

Jesse E. Faust      11/29/73  
SIGNATURE      DATE

Registration No. 3230

Land Surveyor,  Professional Engineer

County Surveyor,  County Engineer

OFFICE OF THE REGISTER OF DEEDS  
County of Yellow Medicine

I hereby certify that this document was filed in the Reg. of Deeds office at 11:15 A.M. on the 11 day of January A.D., 1974

Register of Deeds Norman J. Opdahl

By Kay Nerdahl, Deputy

DOCUMENT NO. 162740

Statement of Evidence: EAST QUARTER CORNER SECTION 12, T114N, R40W

The original Public Land Survey was run in 1857 and a wood post set in mound with pits to mark the corner.

In 1874 Ole Quam located the original post.

In 1912 John Norgaard, County Surveyor located traces of the original post.

In 1916 Norgaard again location the corner.

On June 6, 1973 the Minnesota Highway Department excavated 20 feet x 20 feet by 2 feet deep, but found no evidence of monumentation. Present ground level is natural ground.

An analysis of the record data compared to 1972 & 1973 survey measurements indicates the derivative location of the quarter corner. The derivative location is on a fence line to the east and 33 feet west of a north-south fence line and 33 feet east of a pole line to the south.

For details of survey analysis and 1972 electronic survey measurements, see Survey Report for S.<sup>P.</sup> 4203 and 8701 on file in the Surveys Section, Minnesota Highway Department, Willmar, Minnesota.