

# CERTIFICATE OF LOCATION OF GOVERNMENT CORNER

Northeast Corner of Section 15, Township 114N, Range 40W, 5th P.M.

STATE OF MINNESOTA, County of Yellow Medicine

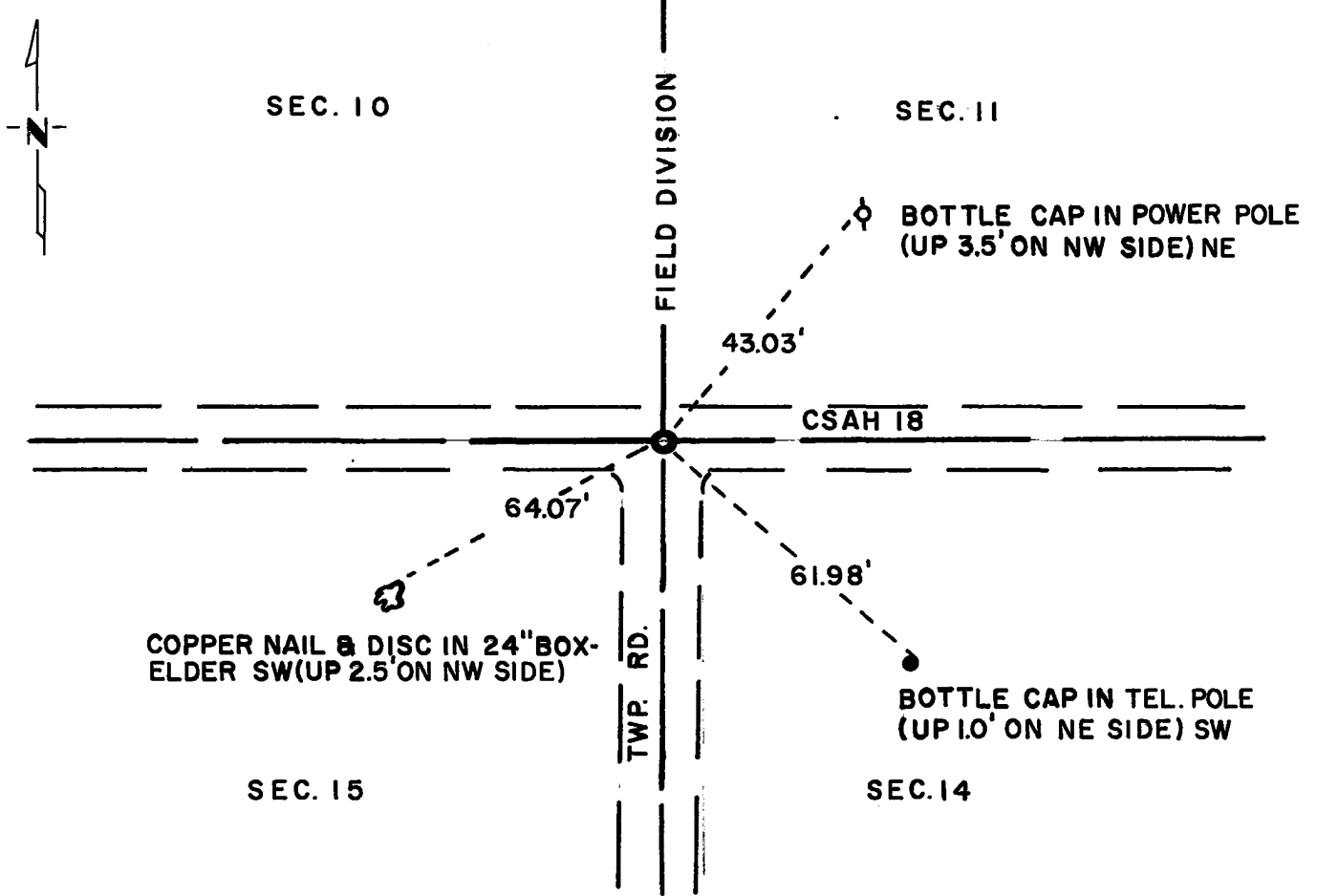
At the corner location shown on the sketch:

On Oct. 21, 1971 found a 18 inch wood stake down 3.5 feet  
DATE

left monument as found,  lowered monument,  removed monument (explain)

On Aug. 25, 1972 placed a Minnesota Highway Department cast iron monument down  
DATE  
0.1 feet

SKETCH OF REFERENCE TIES



Statement of evidence relative to this corner location is on back of page.

I hereby certify that this document and the data contained herein was prepared by me or under my direct supervision.

Jesse E. Faust 11/29/73  
SIGNATURE DATE

Registration No. 3230

Land Surveyor,  Professional Engineer

County Surveyor,  County Engineer

OFFICE OF THE REGISTER OF DEEDS  
County of Yellow Medicine

I hereby certify that this document was filed in the Reg. of Deeds office at 11:20 A.M. on the 11 day of January A.D., 1974

Register of Deeds Norman J. Opdahl

By Kay Nordahl, Deputy

DOCUMENT NO. 162741

**Statement of Evidence:    NORTHEAST CORNER SECTION 15, T114N, R40W**

The original Public Land Survey was run in 1864 and a wood post was set in a mound with pits to mark the corner.

In 1888, George E. Olds placed a stone in the mound with pits to mark the corner.

In 1891 Jonah Peterman located the stone set by Olds.

In 1901, John Norgaard, County Surveyor, found the stone and set a 6 inch x 6 inch x 24 inch jasper monument level with ground to perpetuate the corner. The Yellow Medicine County Highway Department found the monument, date unknown. On October 21, 1971 the Minnesota Highway Department found a 1 inch x 1 inch x 18 inch wood stake down 3.5 feet below road surface and at natural ground level. The stake was at centerline of east-west road and centerline road south and field division north. It was located using ties from a County Highway grading plan.

An analysis of the record data indicates that the wood stake is in agreement with occupation lines and is accepted as the location of the Public Land Survey Corner.

For details of survey analysis and 1972 electronic survey measurements, see Survey Report for S.P. 4203 and 8701 on file in the Surveys Section, Minnesota Highway Department, Willmar, Minnesota.