

# CERTIFICATE OF LOCATION OF GOVERNMENT CORNER

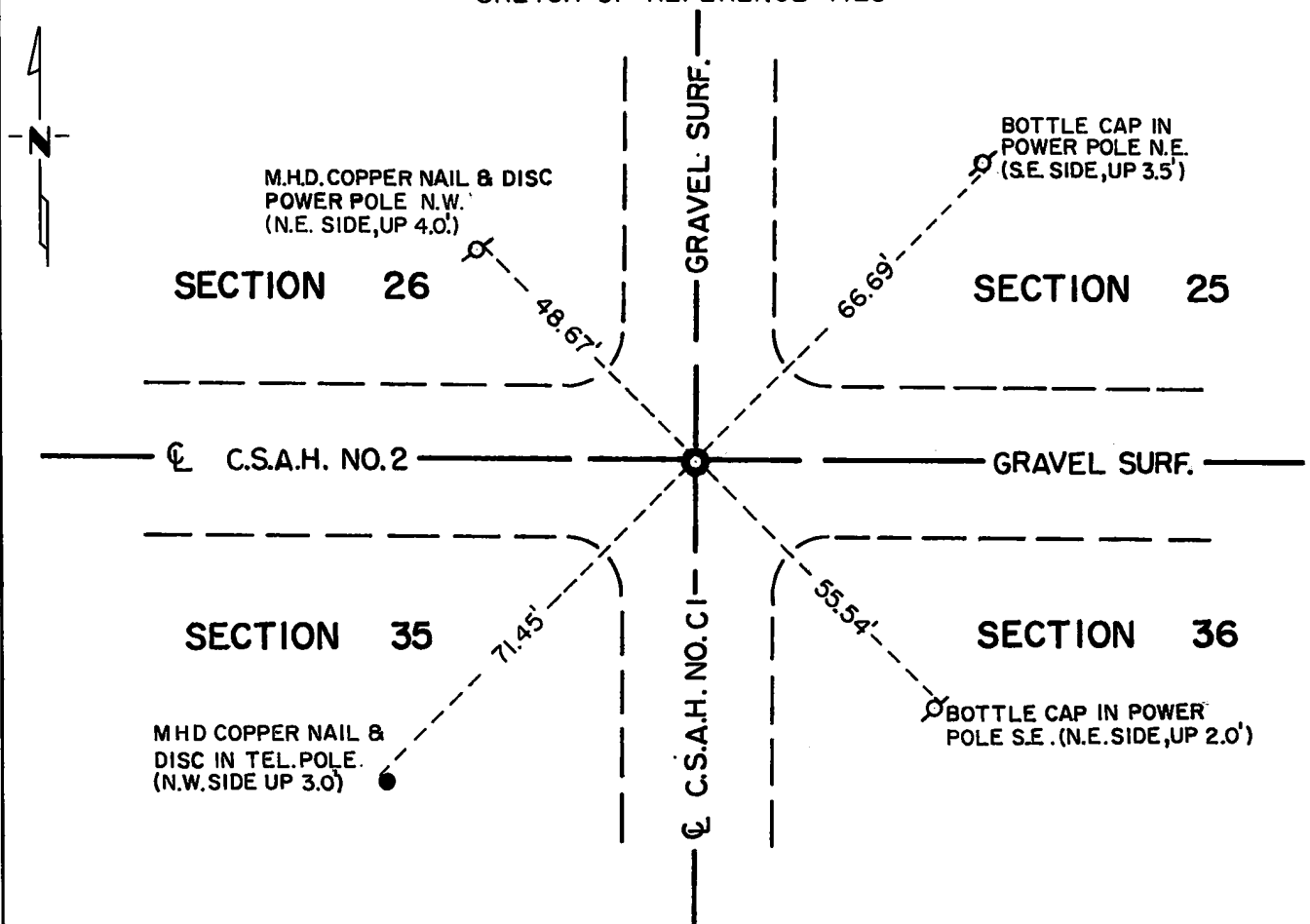
Northeast Corner of Section 35, Township 114N, Range 40W, 5th P.M.

STATE OF MINNESOTA, County of Yellow Medicine

At the corner location shown on the sketch:

- On Aug. 9, 1972 found a 6 inch x 6 inch x 24 inch jasper monument (down 21 inches)  
DATE
- left monument as found,  lowered monument,  removed monument (explain)
- On Aug. 9, 1972 placed a Minnesota Highway Department cast iron monument over jasper monument (down 0.1 feet)  
DATE

SKETCH OF REFERENCE TIES



Statement of evidence relative to this corner location is on back of page.

I hereby certify that this document and the data contained herein was prepared by me or under my direct supervision.

Jesse E. Fant Dec. 4, 1973  
SIGNATURE DATE

Registration No. 3230

- Land Surveyor,  Professional Engineer
- County Surveyor,  County Engineer

OFFICE OF THE REGISTER OF DEEDS  
 County of Yellow Medicine

I hereby certify that this document was filed in the Reg. of Deeds office at 11:30 A.M. on the 11 day of January A.D., 19 74

Register of Deeds Norman J. Opdahl

By Kay Nerdel, Deputy

DOCUMENT NO. 162743

**Statement of Evidence:    NORTHEAST CORNER SECTION 35, T114N, R40W**

The original Public Land Survey was run in 1864 and a post was set in a mound with pits to mark the corner.

In 1901, John Norgaard, County Surveyor, located the corner which he had also found 5 years previous and placed a 6 inch x 6 inch x 24 inch jasper monument to mark the corner.

In 1941 and 1970 the Yellow Medicine County Highway Department found the monument in place. In 1971, the county again found the monument at the centerline of the north-south road and P.I. for east-west road.

On August 9, 1972, the Minnesota Highway Department found the jasper monument and placed a Minnesota Highway Department cast iron monument over it.

An analysis of the record data dating to the original monument provides a continuous chain of perpetuation of the original Public Land Survey corner.

For details of survey analysis and 1972 electronic survey measurements, see Survey Report for S.P. 4203 and 8701 on file in the Surveys Section, Minnesota Highway Department, Willmar, Minnesota.