

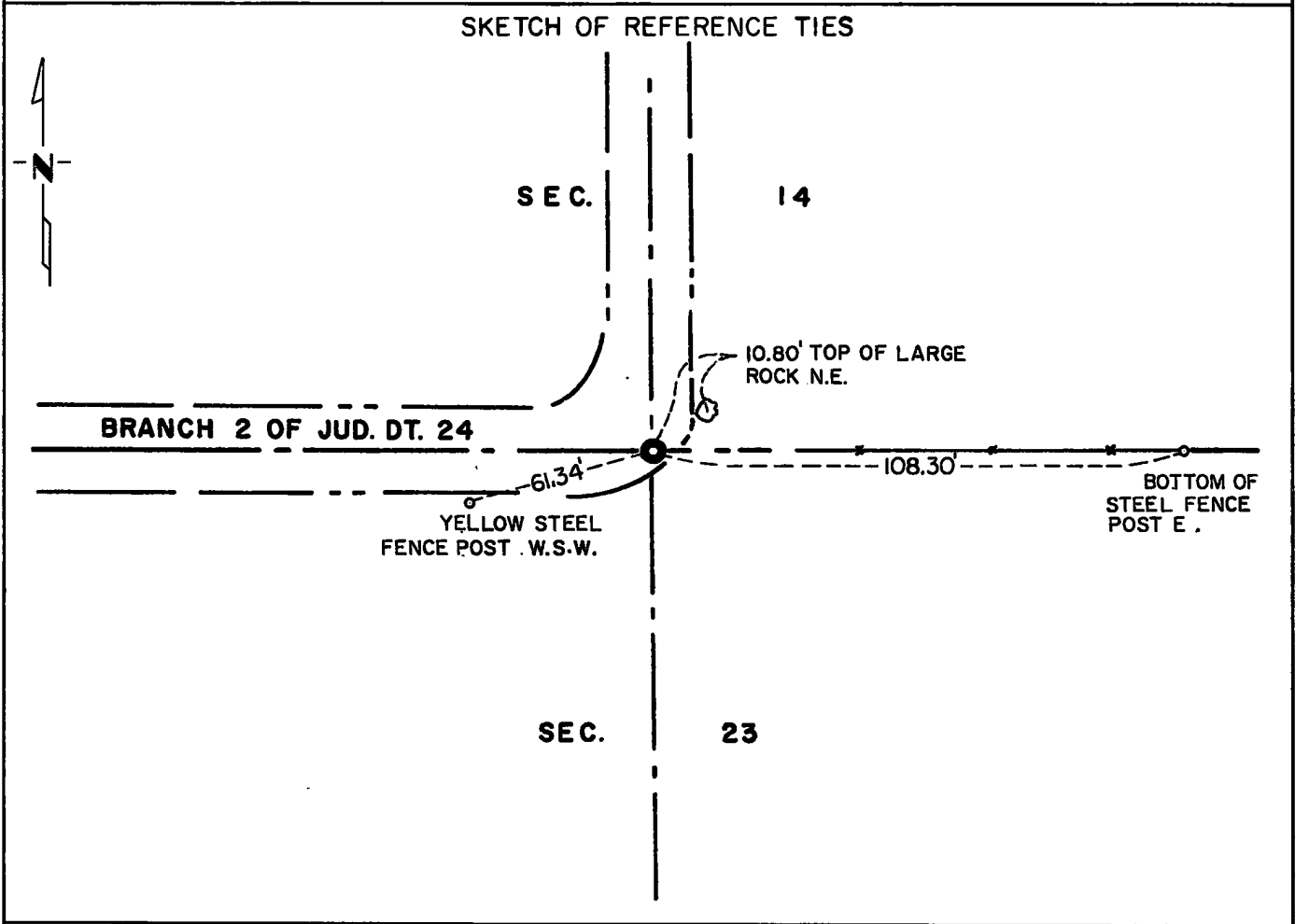
# CERTIFICATE OF LOCATION OF GOVERNMENT CORNER

North Quarter \_\_\_\_\_ Corner of Section 23, Township 114N, Range 40W, 5th P.M.

STATE OF MINNESOTA, County of Yellow Medicine

At the corner location shown on the sketch:

- On \_\_\_\_\_ found a \_\_\_\_\_  
DATE
- left monument as found,  lowered monument,  removed monument (explain)
- On Aug. 9, 1972 placed a Minnesota Highway Department cast iron monument  
DATE  
(flush), guarded by a mound of stones.



Statement of evidence relative to this corner location is on back of page.

I hereby certify that this document and the data contained herein was prepared by me or under my direct supervision.

Jesse E. Fant 12/4/76  
SIGNATURE DATE

Registration No. 3230  
 Land Surveyor,  Professional Engineer  
 County Surveyor,  County Engineer

OFFICE OF THE REGISTER OF DEEDS  
 County of Yellow Medicine

I hereby certify that this document was filed in the Reg. of Deeds office at 11:40 A.M. on the 11 day of January A.D., 19 74

Register of Deeds Norman J. Opdahl

By Kay Nordahl, Deputy

DOCUMENT NO. 162745

Statement of Evidence: NORTH QUARTER CORNER SECTION 23, T114N, R40W

The original Public Land Survey was run in 1864 and a wood post was set in a mound with pits to mark the corner.

In 1940 a telephone pole was found at the location of the corner. The origin of the pole could not be determined. It has since been removed during the construction of a drainage ditch.

This corner was set at the lost location. It is in agreement with the centerline of the drainage ditch to the north and west and a fence line to the east.

For details of survey analysis and 1972 electronic survey measurements, see Survey Report for S.P. 4203 and 8701 on file in the Surveys Section, Minnesota Highway Department, Willmar, Minnesota.