

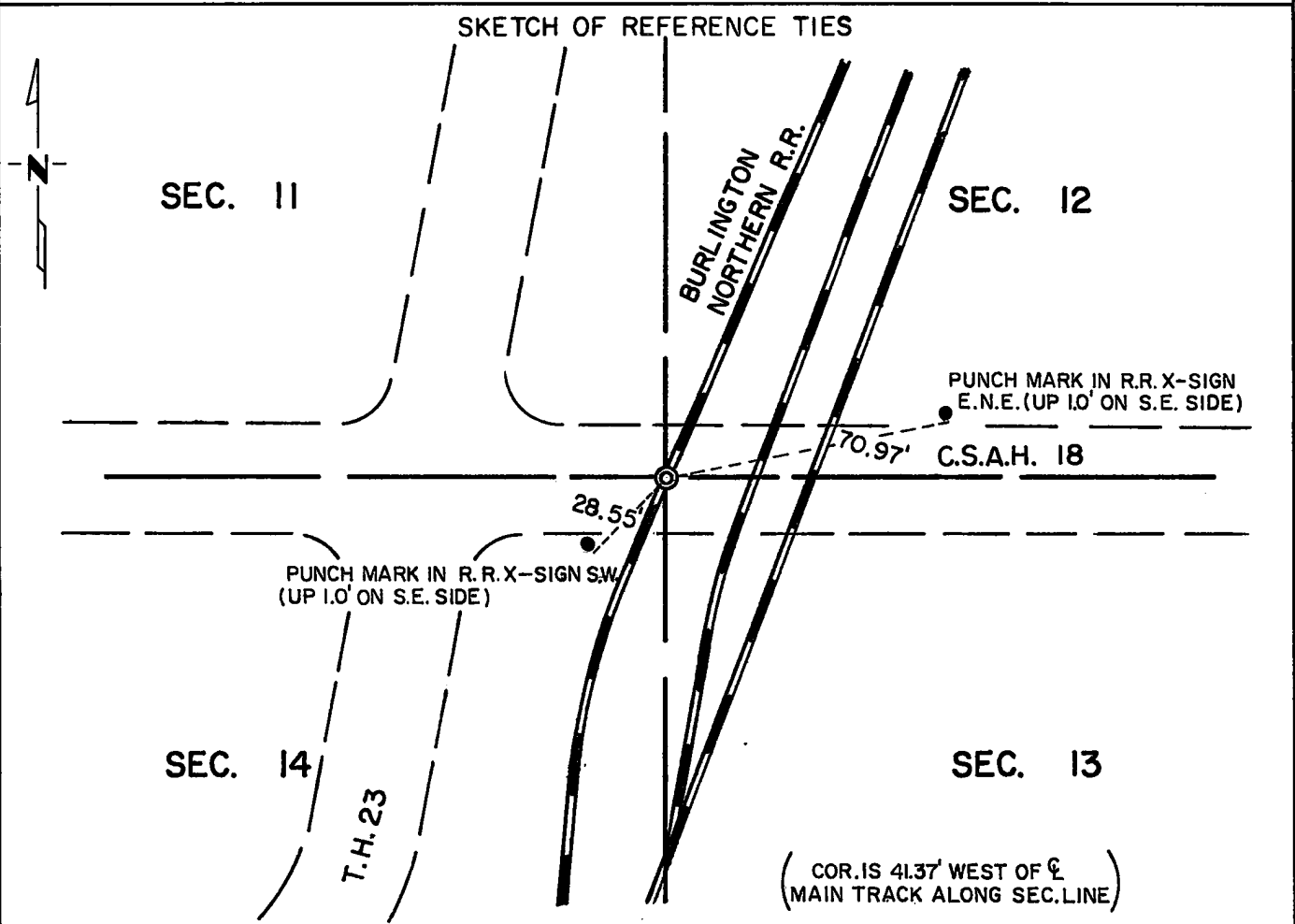
# CERTIFICATE OF LOCATION OF GOVERNMENT CORNER

Northeast Corner of Section 14, Township 114N, Range 40W, 5th P.M.

STATE OF MINNESOTA, County of Yellow Medicine

At the corner location shown on the sketch:

- On \_\_\_\_\_ found a \_\_\_\_\_  
DATE
- left monument as found,  lowered monument,  removed monument (explain)
- On July 31, 1973 placed a two 3/4 inch x 24 inch iron pins - one on top of the  
DATE other. The top iron pin has a brass disc stamped "N.E. Cor. Sec. 14, T114, R40".



Statement of evidence relative to this corner location is on back of page.

I hereby certify that this document and the data contained herein was prepared by me or under my direct supervision.

Jesse E. Fant 12/4/73  
SIGNATURE DATE

Registration No. 3230

- Land Surveyor,  Professional Engineer
- County Surveyor,  County Engineer

OFFICE OF THE REGISTER OF DEEDS.

County of Yellow Medicine

I hereby certify that this document was filed in the Reg. of Deeds office at 11:50 A.M. on the 11 day of January A.D., 19 74

Register of Deeds Norman J. Opsahl

By Kay Merdahl, Deputy

DOCUMENT NO. 162747

**Statement of Evidence:** NORTHEAST CORNER SECTION 14, T114N, R40W

The original Public Land Survey was run in 1864 and a wood post was set in a mound with pits to mark the corner.

In 1890 Jonah Peterman found the original corner and marked it.

In 1901 John Norgaard, County Surveyor, located the corner according to testimony by Squire, Knudsen, and Meard who said Peterman had found the original corner. Norgaard set a 6 inch x 6 inch x 24 inch Jasper monument to mark the corner.

In 1913 Norgaard found the monument in place.

This corner was used in platting the city of Hanley Falls.

The railroad right of way map shows the corner 0.5 feet east of the west rail of a side track.

The county highway map shows the same location.

The ground was excavated to a depth of 7 feet from 2 feet east to 4 feet west and 3 feet south to 3 feet north of obliterated location. The natural ground is about 5 feet below the surface of the present roadway. No physical evidence of monumentation was found in the excavation.

An analysis of the record data compared to 1973 survey measurements indicates the obliterated location for the section corner is on the centerline of east-west road and 0.5 feet east of the west rail of a side track of the Burlington Northern Railroad.

For details of survey analysis and 1972 electronic survey measurements, see Survey Report for S.P. 4203 and 8701 on file in the Surveys Section, Minnesota Highway Department, Willmar, Minnesota.