

CERTIFICATE OF LOCATION OF GOVERNMENT CORNER

East Quarter _____ Corner of Section 14, Township 114N., Range 40W., 5th P.M.

STATE OF MINNESOTA, County of Yellow Medicine

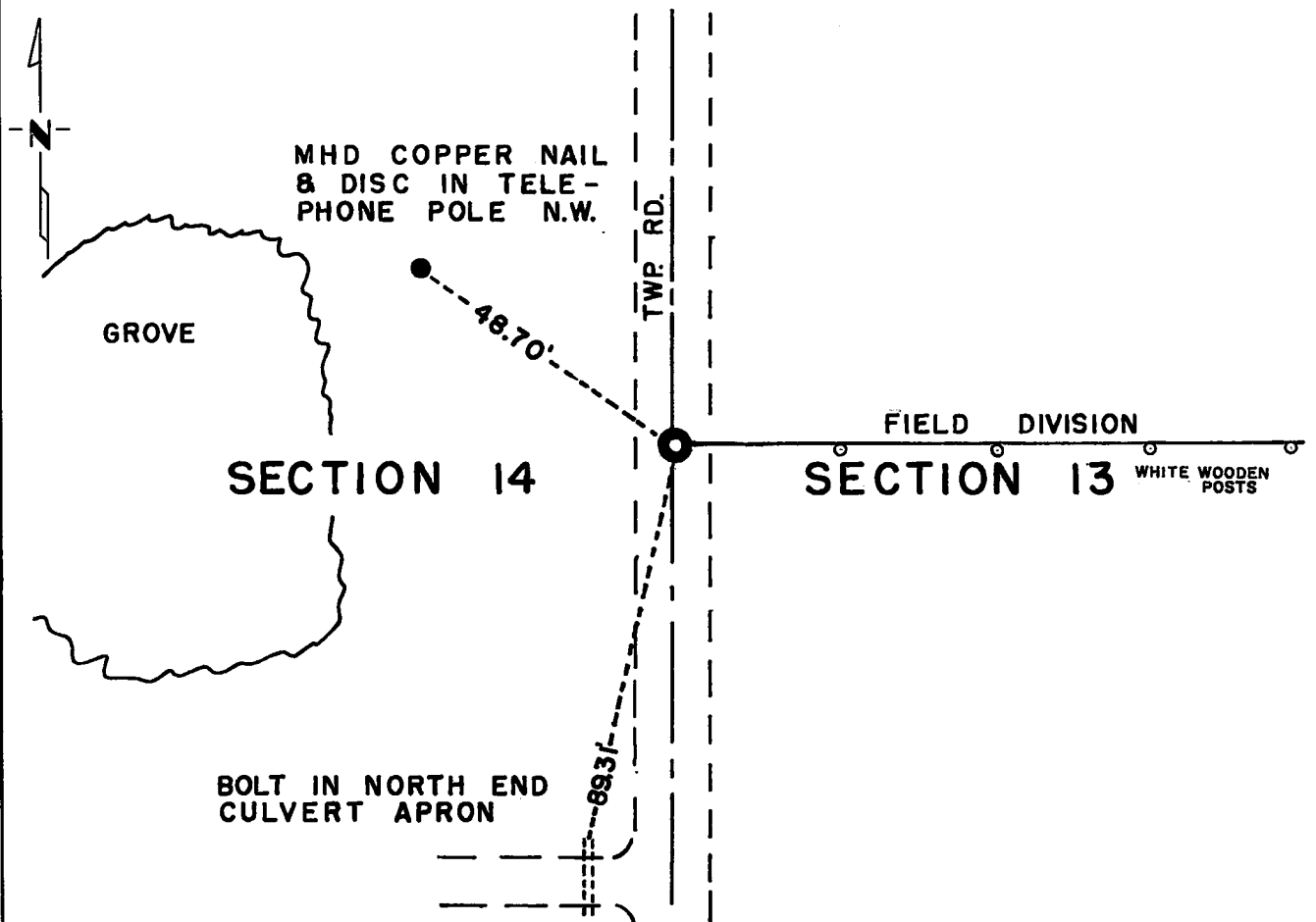
At the corner location shown on the sketch:

On _____ found a _____
DATE

left monument as found, lowered monument, removed monument (explain)

On May 24, 1973 placed a Minnesota Highway Department Cast Iron Monument.
DATE

SKETCH OF REFERENCE TIES



Statement of evidence relative to this corner location is on back of page.

I hereby certify that this document and the data contained herein was prepared by me or under my direct supervision.

John E. Swenson Feb. 8, 1974
SIGNATURE DATE
Registration No. 10460

Land Surveyor, Professional Engineer
 County Surveyor, County Engineer

OFFICE OF THE REGISTER OF DEEDS
County of Yellow Medicine

I hereby certify that this document was filed in the Reg. of Deeds office at 1:45 P.M. on the 19 day of FEBRUARY A.D., 19 74

Register of Deeds Norman J. Opdahl

By Kay Nendahl, Deputy

DOCUMENT NO. 162922

Statement of Evidence: EAST QUARTER CORNER SECTION 14, T114N, R40W, 5th P.M.

The original Public Land Survey was run in 1864 and a wood post was set in a mound with pits to mark the corner.

In 1890, Jonah Peterman placed a stone in the mound with pits.

In 1913, John Norgaard, County Surveyor, could not locate the stone, so he set one equal distance and on line between section corners.

In 1971 the Minnesota Highway Department excavated to a depth of 5 feet from 15 feet North to 10 feet South and from 8 feet East to 5 feet West of ~~the~~ location as set. Natural ground was 3 feet below surface of road. No physical evidence of the corner was found in this excavation.

An analysis of the record data compared to 1972 field measurements indicates the derivative location of the quarter corner is on the centerline of North-South road and on property line marked by a row of white wood posts, to the east.

On May 24, 1973, the Minnesota Highway Department set a cast iron monument at the derivative location. The lost location for this corner would be 6.6 feet East and 8.1 North of the monument as set.

For details of survey analysis, see Survey Report for S.P. 4203 and 8701 on file in the Surveys Section, Minnesota Highway Department, Willmar, Minnesota.