

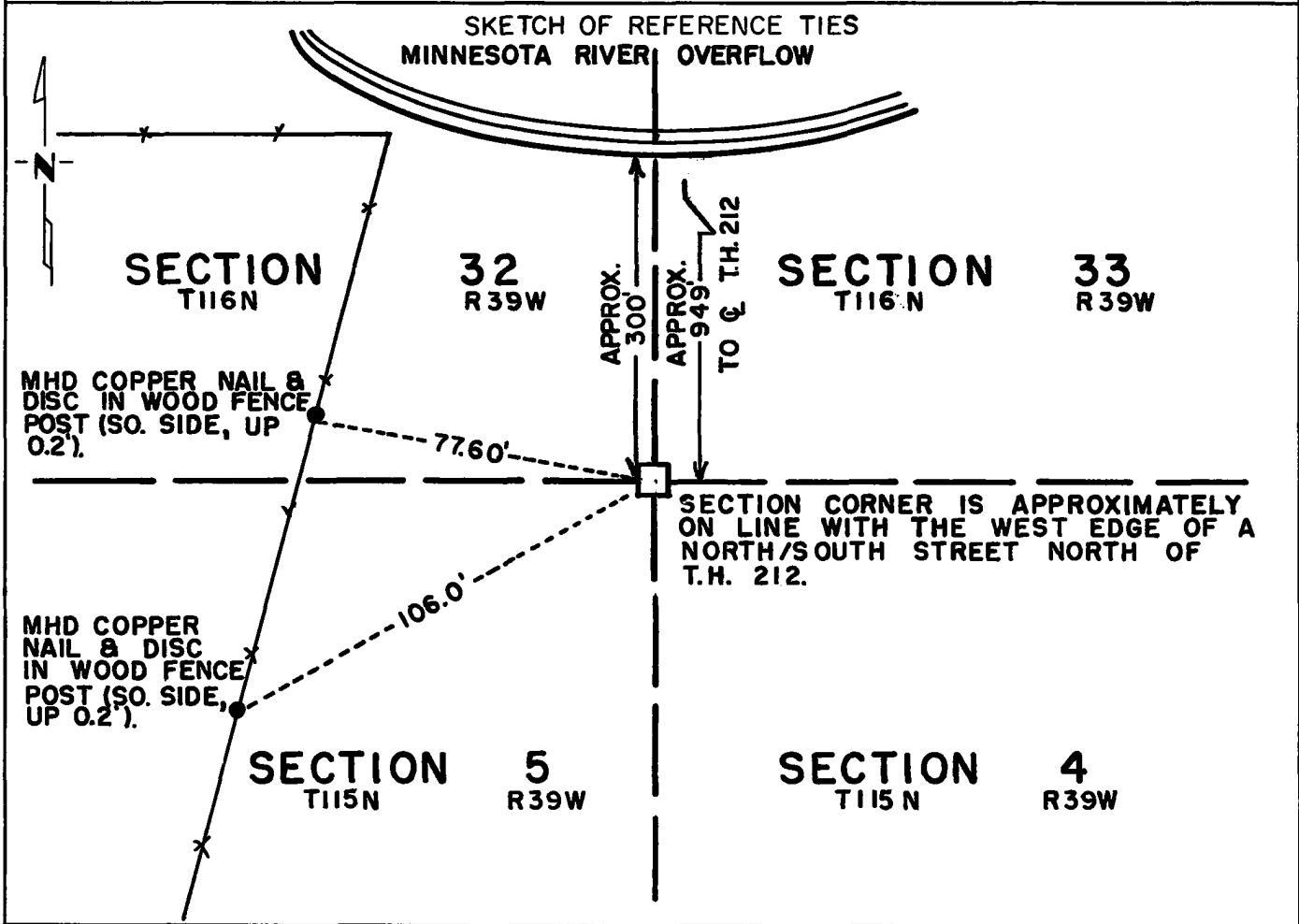
CERTIFICATE OF LOCATION OF GOVERNMENT CORNER

Northeast Corner of Section 5, Township 115N, Range 39W, 5th P.M.

STATE OF MINNESOTA, County of Yellow Medicine

At the corner location shown on the sketch:

- On Nov. 4, 1971 found a 6" x 6" x 24" Granite Monument Projecting 3" above the
DATE ground
- left monument as found, lowered monument, removed monument (explain)
- On _____ placed a _____
DATE



SECTION CORNER IS APPROXIMATELY ON LINE WITH THE WEST EDGE OF A NORTH/SOUTH STREET NORTH OF T.H. 212.

Statement of evidence relative to this corner location is on back of page.

I hereby certify that this document and the data contained herein was prepared by me or under my direct supervision.

Jesse E. Fant 4/2/74
SIGNATURE DATE

Registration No. 3230
 Land Surveyor, Professional Engineer
 County Surveyor, County Engineer

OFFICE OF THE REGISTER OF DEEDS
 County of Yellow Medicine

I hereby certify that this document was filed in the Reg. of Deeds office at 2:35 P.M. on the 19 day of April, A.D., 1974

Register of Deeds Norman J. Opdahl
 By Kay Nordahl, Deputy
 DOCUMENT NO. 163237

Statement of Evidence: NORTHEAST CORNER SECTION 5, T115N, R39W, 5TH P.M.

The original Public Land Survey corner was set in 1858 by W. J. Neely. A wood post was set in a dirt mound with pits and coal was deposited under the post to mark the corner.

In 1901, John Norgaard, County Surveyor, found a stone and stake in the government mound and set a 6" x 6" x 24" granite monument in the government mound.

This corner was found in 1931 by the Minnesota Highway Department and is also referred to on a Burlington-Northern Railroad profile which was drafted prior to 1936.

The 6" x 6" x 24" granite monument was found in 1971. The top of the monument projects approximately 3 inches above the ground.

An analysis of this data provides a continuous chain of record perpetuating the location of the original Public Land Survey corner.

For details of survey analysis and 1973 electronic survey measurements, see Survey Report for S.P. 8701-18 from 0.3 miles North of the Yellow Medicine River to Granite Falls on file in the Surveys Section, Minnesota Highway Department, Willmar, Minnesota.