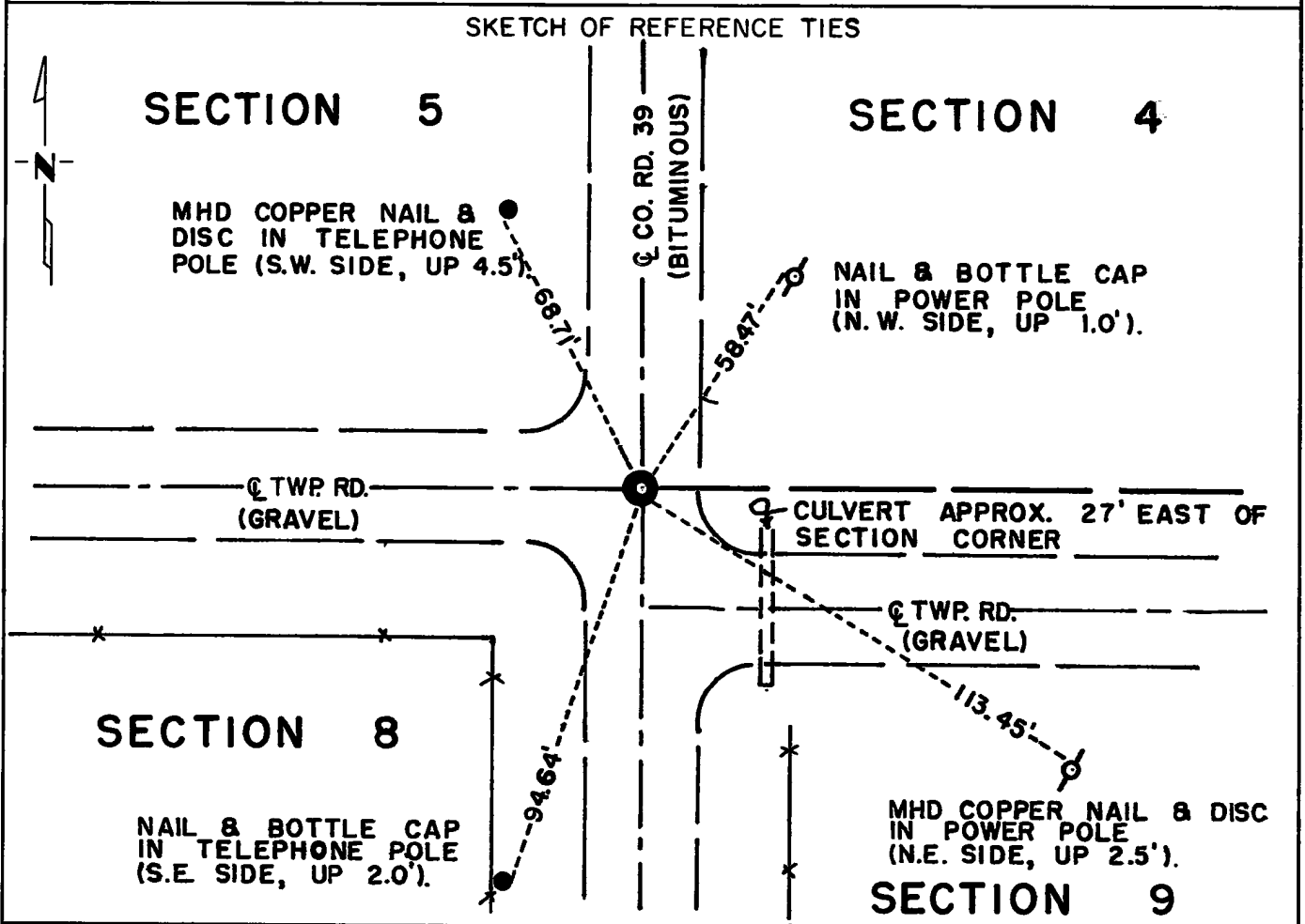


CERTIFICATE OF LOCATION OF GOVERNMENT CORNER

Northeast _____ Corner of Section 8, Township 115N, Range 39W, 5th P.M.
 STATE OF MINNESOTA, County of Yellow Medicine

At the corner location shown on the sketch:

- On Sep. 30, 1971 found a 6" x 6" x 24" Granite Monument 3.0' Below Road Surface
DATE
- left monument as found, lowered monument, removed monument (explain)
- On June 5, 1973 placed a Minnesota Highway Department cast iron monument 0.2 ft.
DATE
below road surface over granite monument



Statement of evidence relative to this corner location is on back of page.

I hereby certify that this document and the data contained herein was prepared by me or under my direct supervision.

John E. Juvenon 4-5-74
SIGNATURE DATE

Registration No. 10460
 Land Surveyor, Professional Engineer
 County Surveyor, County Engineer

OFFICE OF THE REGISTER OF DEEDS
 County of Yellow Medicine

I hereby certify that this document was filed in the Reg. of Deeds office at 2:40 P.M. on the 19 day of April A.D., 1974

Register of Deeds Norman J. Opdahl
 By Kay Nerdsche, Deputy
 DOCUMENT NO. 163238

Statement of Evidence: NORTHEAST CORNER SECTION 8, T115N, R39W, 5TH P.M.

The original Public Land Survey was completed in 1864 by Charles E. Davis and J. W. Webb Jr. A wood post was set in a mound of dirt with pits.

In 1901, John Norgaard, County Surveyor, found a stake and a stone at the intersection of roads which were set in the government mound by adjoining landowners. He set a 6" x 6" x 24" granite monument at this location at that time.

From records in the County Engineer's Office, the granite monument has been found and used as a section corner prior to 1937, in 1937, and in 1959.

An analysis of this data provides a continuous chain of record perpetuating the location of the original Public Land Survey corner.

For details of survey analysis and 1973 electronic survey measurements, see Survey Report for S.P. 8701-18 from 0.3 miles North of the Yellow Medicine River to Granite Falls on file in the Surveys Section, Minnesota Highway Department, Willmar, Minnesota.