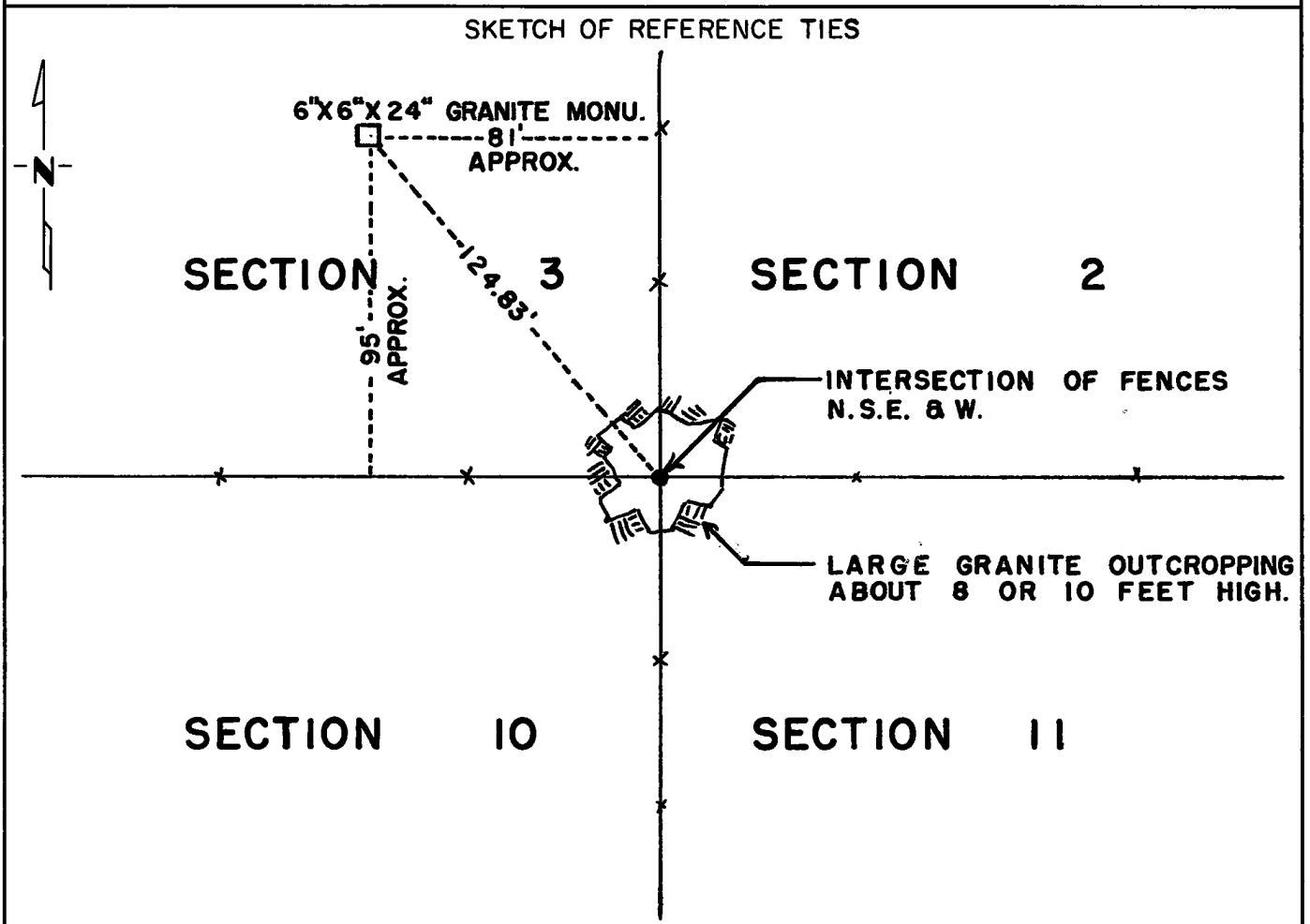


CERTIFICATE OF LOCATION OF GOVERNMENT CORNER

Northeast Corner of Section 10, Township 115N, Range 39W, 5th P.M.
 STATE OF MINNESOTA, County of Yellow Medicine

At the corner location shown on the sketch:

- On Oct. 12, 1971 found the intersection of fences, North, South, East and West
DATE
- left monument as found, lowered monument, removed monument (explain)
- On _____ placed a _____
DATE



Statement of evidence relative to this corner location is on back of page.

I hereby certify that this document and the data contained herein was prepared by me or under my direct supervision.

Jesse E. Fant 4/3/74
SIGNATURE DATE

Registration No. 3230
 Land Surveyor, Professional Engineer
 County Surveyor, County Engineer

OFFICE OF THE REGISTER OF DEEDS
 County of Yellow Medicine

I hereby certify that this document was filed in the Reg. of Deeds office at 2:50 A.M. on the 19 day of April A.D., 1974

Register of Deeds Norman J. Opdahl
 By Kay Nerdahl, Deputy
 DOCUMENT NO. 163240

Statement of Evidence: NORTHEAST CORNER SECTION 10, T115N, R39W, 5TH P.M.

The original Public Land Survey was completed in 1864 by Charles E. Davis and J. W. Webb Jr. A wood post was set in a mound of rocks with mounds of stones in lieu of pits to mark the corner.

Jonah Peterman, County Surveyor, made a survey in this area in 1883 and stated that the mound of stones was still in place.

John Norgaard, County Surveyor, established the section corner and set a 6" x 6" x 24" granite monument in 1901.

A 1903 court case, Yellow Medicine County Clerk of Court file number 2828 Minnesota District Court, Charles P. Griswold and Jane B. Griswold vs. H. W. Austin et.al., established the true location of the section corner at the intersection of fences.

A quote from a portion of the file:

"That northeast corner of said Section 10 as determined by the United States Government Survey is located at a point situated in a mound of rocks about 8 feet in height, which mound is now covered with growing brush and situated in a southeasterly direction from said stone monument established by said Norgaard a distance of 7 rods 9 feet 4 inches." (124.83 ft.)

The file goes on to say that this is the true location of the section corner as determined by the original United States Government Survey.

John Norgaard used the intersection of fences as the section corner for subsequent surveys in 1918 and 1927.

Arbie E. Nelson, a private Land Surveyor, used the intersection of fences as one of the section corners to establish the north quarter corner of Section 10 in 1968.

On March 16, 1973 we found the 6" x 6" x 24" granite monument that was set by John Norgaard in 1901. The distance from the monument to the intersection of fences checked with the distance stated in the court file.

An analysis of this data provides a continuous chain of record perpetuating the original Public Land Survey corner.

For details of survey analysis and 1973 electronic survey measurements, see Survey Report for S.P. 8701-18 from 0.3 miles North of the Yellow Medicine River to Granite Falls on file in the Surveys Section, Minnesota Department, Willmar, Minnesota.