

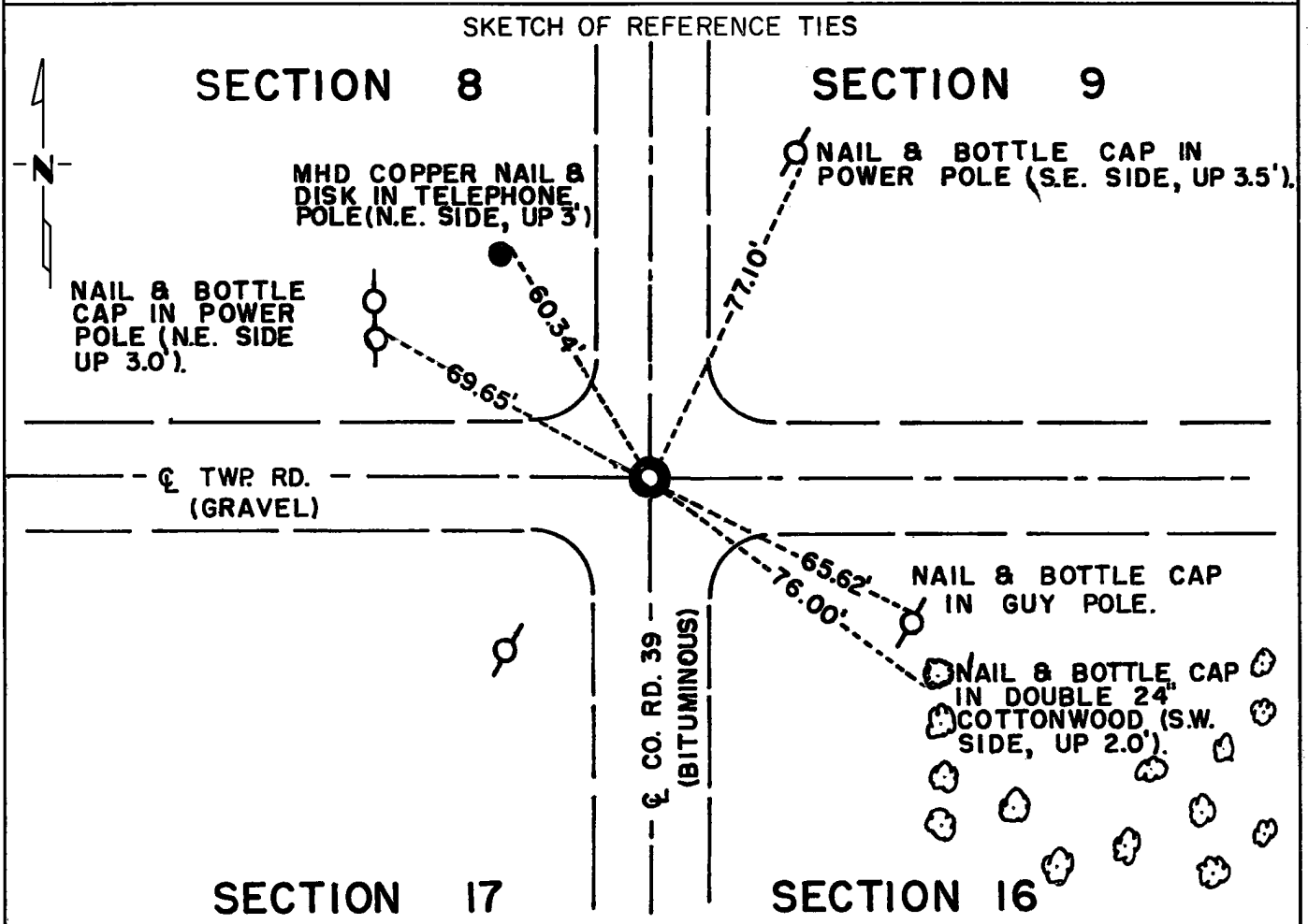
CERTIFICATE OF LOCATION OF GOVERNMENT CORNER

Northeast Corner of Section 17, Township 115N, Range 39W, 5th P.M.

STATE OF MINNESOTA, County of Yellow Medicine

At the corner location shown on the sketch:

- On Oct. 20, 1971 found a 6" x 6" x 24" Granite Monument also a 3/8" x 24" Iron Pin over Monument is 3.6' Below Road Surface
DATE
- left monument as found, lowered monument, removed monument (explain)
- On May 23, 1973 placed a Minnesota Highway Department cast iron monument 0.1 ft. below road surface
DATE



Statement of evidence relative to this corner location is on back of page.

I hereby certify that this document and the data contained herein was prepared by me or under my direct supervision.

Jesse E. Fant 4/3/74
SIGNATURE DATE

Registration No. 3230
 Land Surveyor, Professional Engineer
 County Surveyor, County Engineer

OFFICE OF THE REGISTER OF DEEDS
 County of Yellow Medicine

I hereby certify that this document was filed in the Reg. of Deeds office at 3:00 P.M. on the 19 day of April A.D., 1974

Register of Deeds Norman J. Opdahl

By Kay Nerdahl, Deputy

DOCUMENT NO. 163242

Statement of Evidence: NORTHEAST CORNER SECTION 17, T115N, R39W, 5TH P.M.

The original Public Land Survey was completed in 1864 by Charles E. Davis and J. W. Webb Jr. and a wood post was set in a mound of dirt with pits to mark the corner.

In 1901, John Norgaard, County Surveyor, found a stone in the intersection of roads which was set by adjacent landowners in the government mound. Norgaard replaced the stone with a 6" x 6" x 24" granite monument at this time.

Records in the County Engineer's Office indicate that this granite monument was found and used as a section corner prior to 1937. The granite monument was found and used as a section corner in 1937 and again in 1959 when an iron was placed over the granite monument.

A 3/8" by 24" iron pin over a 6" x 6" x 24" granite monument was found during the 1971 excavation for this corner.

An analysis of the record data and field survey measurements indicates that the in-place granite monument has marked the corner for over 70 years, and is accepted as the location of the Public Land Survey corner.

For details of survey analysis and 1973 electronic survey measurements see Survey Report for S.P. 8701-18 from 0.3 miles North of the Yellow Medicine River to Granite Falls on file in the Surveys Section, Minnesota Highway Department, Willmar, Minnesota.