

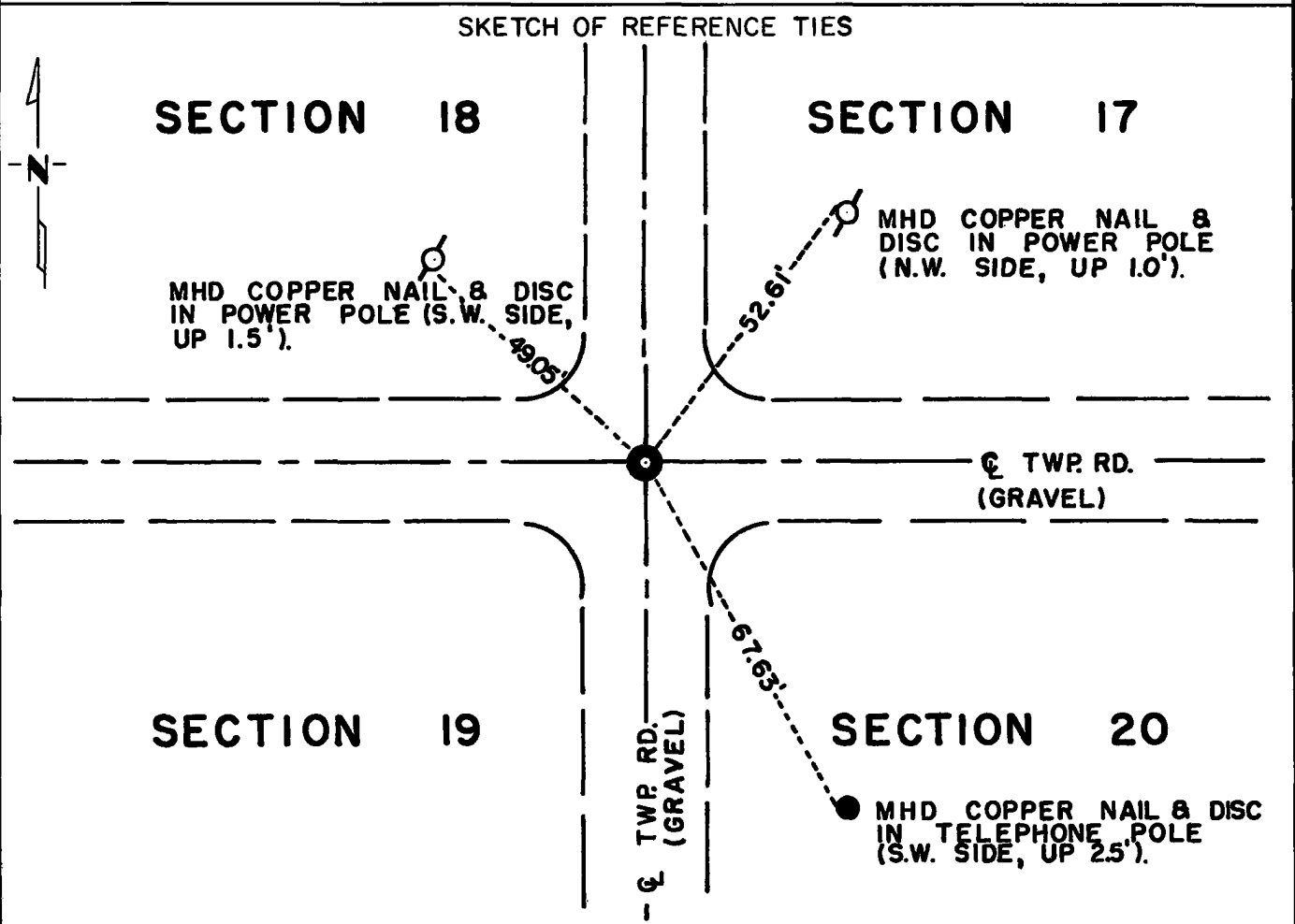
CERTIFICATE OF LOCATION OF GOVERNMENT CORNER

Northeast _____ Corner of Section 19, Township 115N, Range 39W, 5th P.M.

STATE OF MINNESOTA, County of Yellow Medicine

At the corner location shown on the sketch:

- On Nov. 3, 1972 found a 6" x 6" x 24" granite monument 2.0 ft. below the road surface at intersection of roads North, South, East & West
DATE
- left monument as found, lowered monument, removed monument (explain)
- On Nov. 3, 1972 placed a M.H.D. cast iron monument 0.4 ft. below road surface and over the granite monument
DATE



Statement of evidence relative to this corner location is on back of page.

I hereby certify that this document and the data contained herein was prepared by me or under my direct supervision.

John E. Juerna 4-5-74
SIGNATURE DATE

Registration No. 10460

- Land Surveyor, Professional Engineer
- County Surveyor, County Engineer

OFFICE OF THE REGISTER OF DEEDS
 County of Yellow Medicine

I hereby certify that this document was filed in the Reg. of Deeds office at 3:05 P.M. on the 19 day of April A.D., 1974

Register of Deeds Norman J. Opdahl

By Kay Nerdahl, Deputy

DOCUMENT NO. 163243

Statement of Evidence: NORTHEAST CORNER SECTION 19, T115N, R39W, 5TH P.M.

The original Public Land Survey was completed in 1864 by Charles E. Davis and J. W. Webb Jr. A wood post was set in a mound of dirt with pits to mark the corner.

In 1901, John Norgaard, County Surveyor, found a stone at the intersection of roads running north, south, east and west. He set a 6" x 6" x 24" granite monument at this location at that time.

This monument has been found and used as the section corner in 1939, 1953 and 1962.

An analysis of the record data provides an accepted position for this section corner.

For details of survey analysis and the 1972 electronic survey measurements see Survey Report for S.P. 8701-18 from 0.3 miles North of the Yellow Medicine River to Granite Falls on file in the Surveys Section, Minnesota Highway Department, Willmar, Minnesota.