

CERTIFICATE OF LOCATION OF GOVERNMENT CORNER

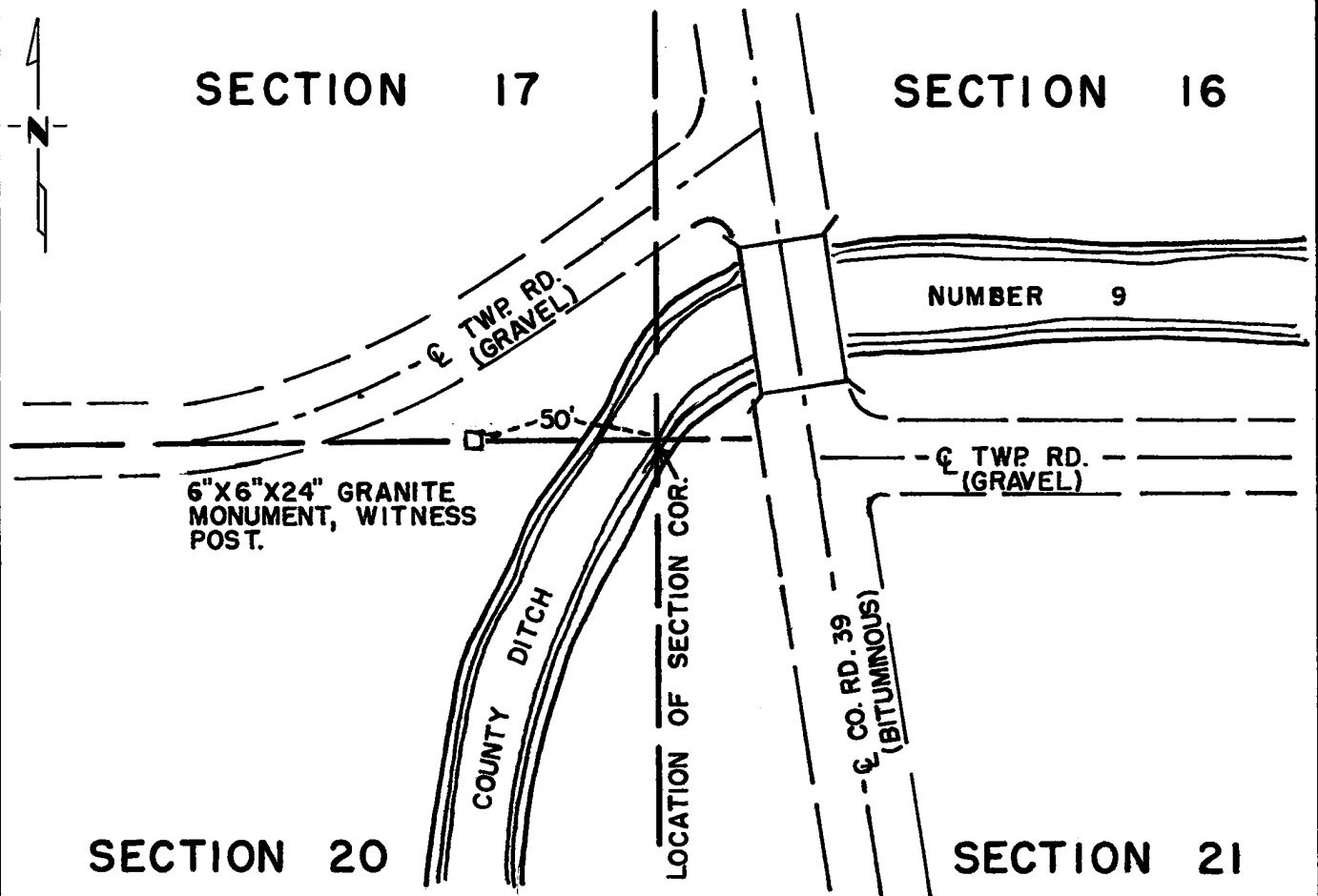
Northeast Corner of Section 20, Township 115N, Range 39W, 5th P.M.

STATE OF MINNESOTA, County of Yellow Medicine

At the corner location shown on the sketch:

- On Sep. 29, 1973 found a 6" x 6" x 24" granite monument which is the witness corner to the section corner - the section corner falls in a drainage ditch
DATE
- left monument as found, lowered monument, removed monument (explain)
- On _____ placed a could not set a monument at the section corner
DATE
because it falls in the drainage ditch

SKETCH OF REFERENCE TIES



Statement of evidence relative to this corner location is on back of page.

I hereby certify that this document and the data contained herein was prepared by me or under my direct supervision.

John E. Juener 4-5-74
SIGNATURE DATE

Registration No. 10460

- Land Surveyor, Professional Engineer
- County Surveyor, County Engineer

OFFICE OF THE REGISTER OF DEEDS
 County of Yellow Medicine

I hereby certify that this document was filed in the Reg. of Deeds office at 3:10 P.M. on the 19 day of April A.D., 1974

Register of Deeds Norman J. Opdahl

By Kay Nordahl, Deputy

DOCUMENT NO. 163244

Statement of Evidence: NORTHEAST CORNER SECTION 20, T115N, R39W, 5TH P.M.

The original Public Land Survey was completed in 1864 by Charles E. Davis and J. W. Webb Jr. A wood post was set in a mound of dirt with pits on the south edge of a ravine to mark the corner.

In 1901, John Norgaard, County Surveyor, found a stake that was set according to the old corner by a surveyor named Fairbanks. Norgaard set a 6" x 6" x 24" granite monument at this location at that time.

In 1931, John Norgaard set a 6" x 6" x 24" granite monument for a witness corner to the section corner. The witness corner was set 50 feet west of the section corner on the north line of section 20.

Old county road grading plans show that the section corner falls in the drainage ditch and that a witness corner is in place 50 feet west of the section corner and on the north line of Section 20. The date of the plans is unknown.

The position of the section corner is on the easterly extension of the line between the northwest corner of Section 20 and the witness corner, being 50 feet east of the witness corner.

An analysis of the record data compared to the 1972 field measurements indicates that this positioning of the section corner is in agreement with past surveys and is accepted as the location of the Public Land Survey corner.

For details of survey analysis and 1973 electronic survey measurements, See Survey Report for S.P. 8701-18 from 0.3 miles North of the Yellow Medicine River to Granite Falls on file in the Surveys Section, Minnesota Highway Department, Willmar, Minnesota.