

CERTIFICATE OF LOCATION OF GOVERNMENT CORNER

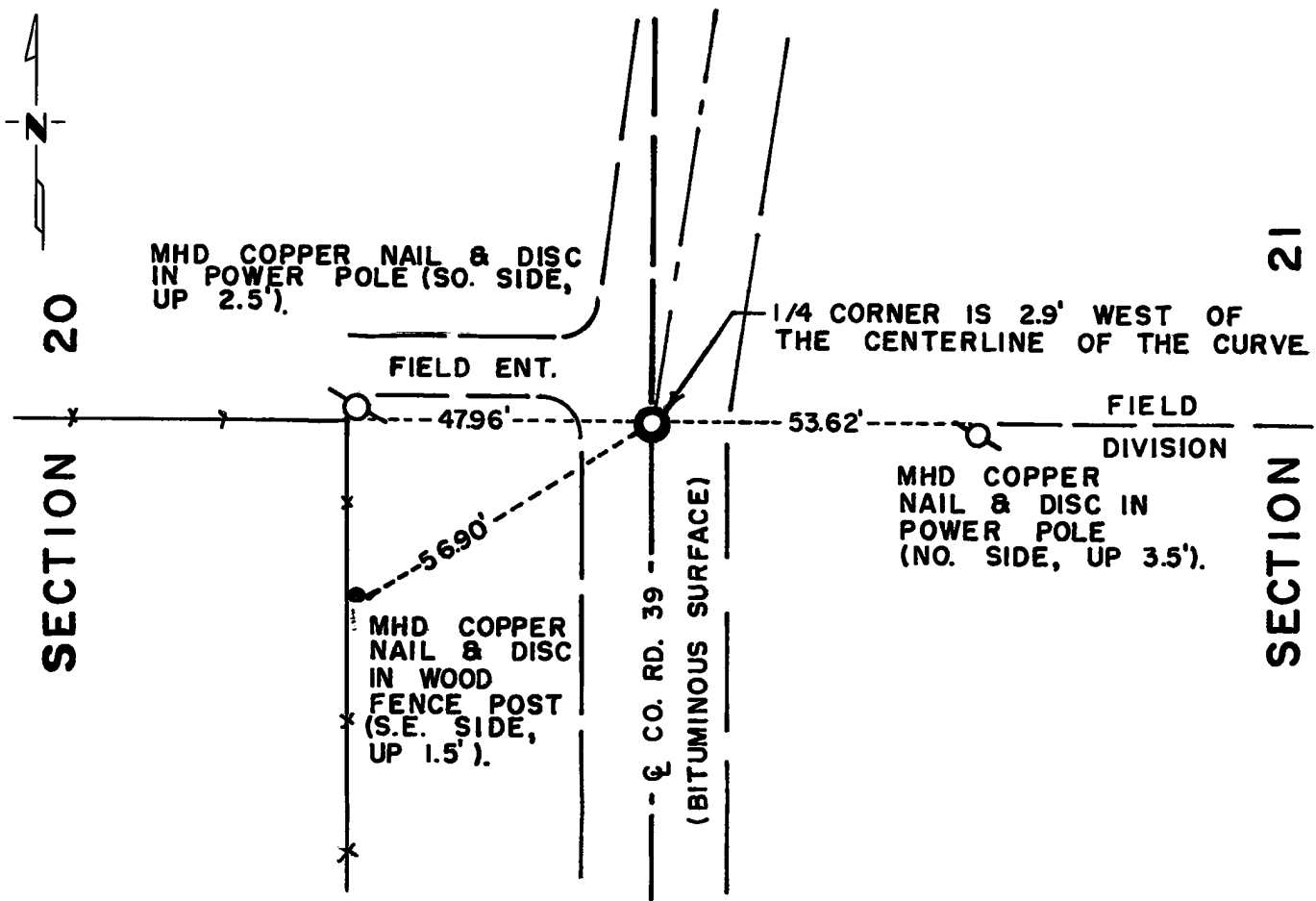
East Quarter _____ Corner of Section 20, Township 115N, Range 39W, 5th P.M.

STATE OF MINNESOTA, County of Yellow Medicine

At the corner location shown on the sketch:

- On Nov. 3, 1972 found a 4" x 8" x 24" quarried stone 3.5 ft. below road surface
DATE
- left monument as found, lowered monument, removed monument (explain)
- On Nov. 3, 1972 placed a Minnesota Highway Department cast iron monument 0.3 ft. below road surface, over stone
DATE

SKETCH OF REFERENCE TIES



Statement of evidence relative to this corner location is on back of page.

I hereby certify that this document and the data contained herein was prepared by me or under my direct supervision.

John E. Sueno 4-5-74
SIGNATURE DATE

Registration No. 10460

- Land Surveyor, Professional Engineer
- County Surveyor, County Engineer

OFFICE OF THE REGISTER OF DEEDS
County of Yellow Medicine

I hereby certify that this document was filed in the Reg. of Deeds office at 3:15 P.M. on the 19 day of April A.D., 1974

Register of Deeds Norman J. Opdahl

By Kay Nerdahl, Deputy

DOCUMENT NO. 163245

Statement of Evidence: EAST QUARTER CORNER SECTION 20, T115N, R39W, 5TH P.M.

The original Public Land Survey was completed in 1864 by Charles E. Davis and J. W. Webb Jr. A wood post was set in a mound of dirt with pits to mark the corner.

An old County Highway map shows the quarter corner located at the point of intersection of tangents of the county road.

The origin of the quarried stone could not be determined.

The position of the quarter corner is indicated by a fence line west, a field division east, the intersection of the centerline tangents of the county road. The extensions of these lines intersect at a common point, i.e., the stone monument that was found in place.

This stone monument has marked the corner for many years and is accepted as the location of the Public Land Survey corner.

For 1972 electronic survey measurements see Survey Report for S.P. 8701-18 from 0.3 miles North of the Yellow Medicine River to Granite Falls on file in the Surveys Section, Minnesota Highway Department, Willmar, Minnesota.