

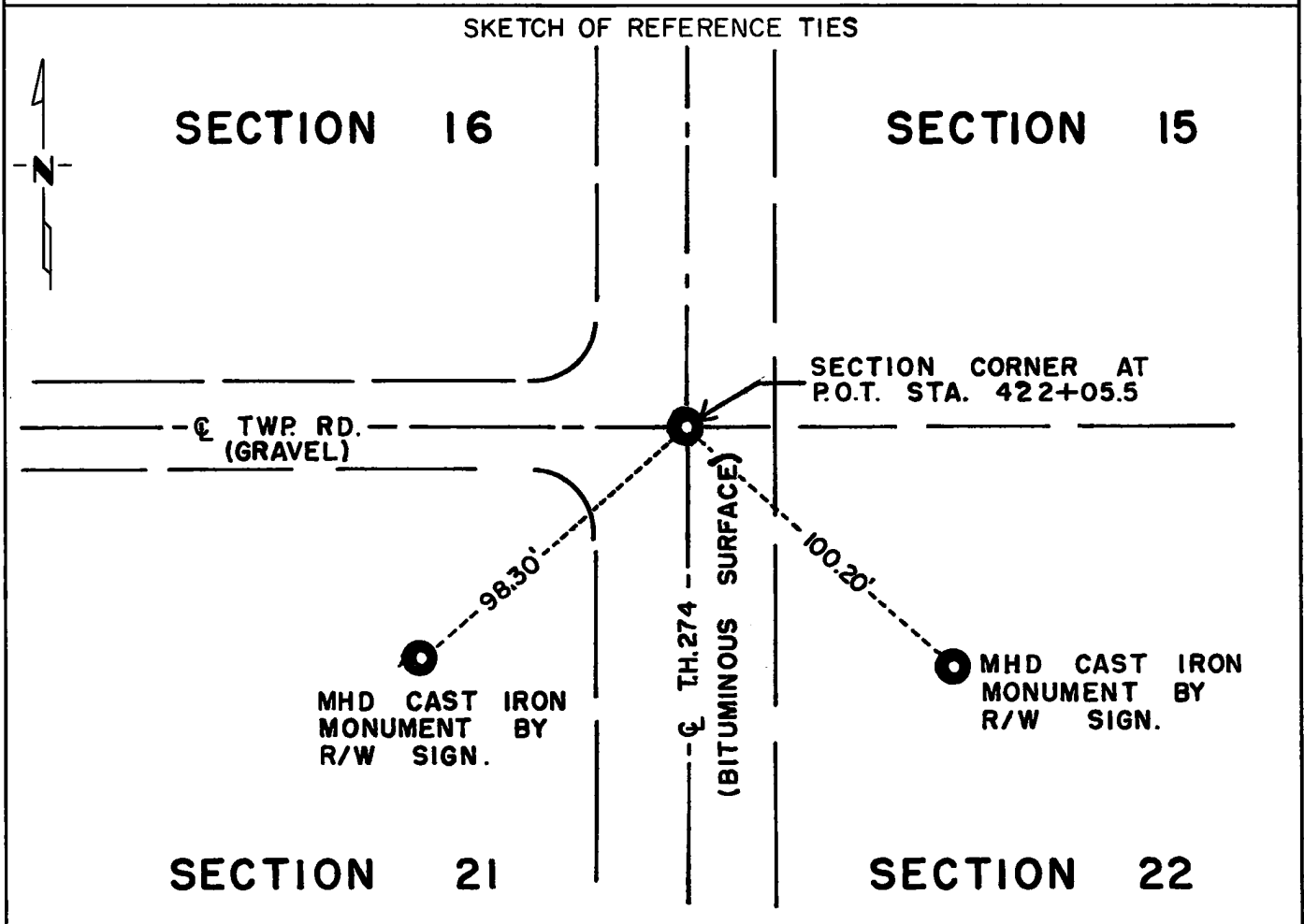
# CERTIFICATE OF LOCATION OF GOVERNMENT CORNER

Northeast \_\_\_\_\_ Corner of Section 21, Township 115N, Range 39W, 5th P.M.

STATE OF MINNESOTA, County of Yellow Medicine

At the corner location shown on the sketch:

- On Dec. 16, 1970 found a Minnesota Highway Department cast iron monument  
(20" x 6" x 4") <sup>DATE</sup> 2" below road surface
  - left monument as found,  lowered monument,  removed monument (explain)
- On \_\_\_\_\_ placed a \_\_\_\_\_  
DATE



Statement of evidence relative to this corner location is on back of page.

I hereby certify that this document and the data contained herein was prepared by me or under my direct supervision.

Jesse E. Fant 4/9/74  
SIGNATURE DATE  
 Registration No. 3230  
 Land Surveyor,  Professional Engineer  
 County Surveyor,  County Engineer

OFFICE OF THE REGISTER OF DEEDS  
 County of Yellow Medicine

I hereby certify that this document was filed in the Reg. of Deeds office at 3:20 P.M. on the 19 day of April A.D., 19 74  
 Register of Deeds Norman J. Opdahl  
 By Kay Nordahl, Deputy  
 DOCUMENT NO. 163246

Statement of Evidence:      NORTHEAST CORNER SECTION 21, T115N, R39W, 5TH P.M.

The original Public Land Survey was completed in 1864 by Charles E. Davis and J. W. Webb Jr. A wood post was set in a mound of dirt with pits to mark the corner.

In 1901, John Norgaard, County Surveyor, found a stone in a mound which he and other surveyors had used as the section corner in the subdivision of adjoining sections. He replaced the stone with a 6" x 6" x 24" granite monument.

In 1928 grading plans in the County Engineer's Office show that a granite monument was found at the intersection of the centerline of State Road #3 (presently T.H. 274) with the centerline of the township road to the west.

The granite monument was again found in 1965.

Arbie E. Nelson, a private Land Surveyor, set a Minnesota Highway Department cast iron monument at the intersection of the centerline of T.H. 274 with the centerline of the township road west in April 1968.

Both the granite monument and cast iron monument were destroyed during road grading operations in the summer of 1968. However, the position of the monument was referenced by a Minnesota Highway Department survey crew.

In 1970, a Minnesota Highway Department cast iron monument was set by a Minnesota Highway Department survey crew according to the reference markers that were set in 1968.

The in place cast iron monument is accepted as the location of the Public Land Survey corner.

For 1973 electronic survey measurements see Survey Report for S.P. 8701-18 from 0.3 miles North of the Yellow Medicine River to Granite Falls on file in the Surveys Section, Minnesota Highway Department, Willmar, Minnesota.