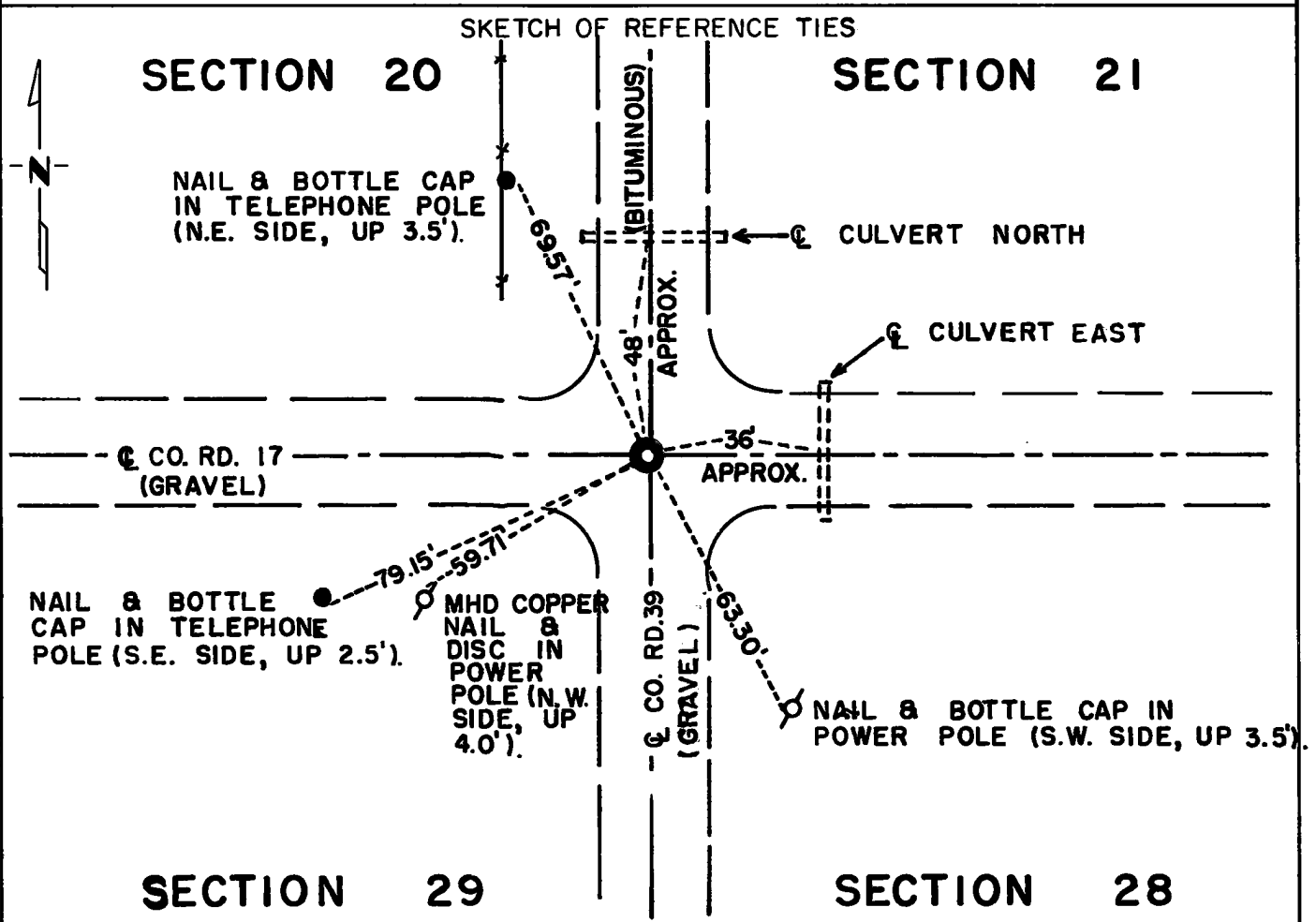


CERTIFICATE OF LOCATION OF GOVERNMENT CORNER

Northeast Corner of Section 29, Township 115N, Range 39W, 5th P.M.
 STATE OF MINNESOTA, County of Yellow Medicine

At the corner location shown on the sketch:

- On Sep. 29, 1971 found a 6" x 6" x 24" Granite Monument 2.0' Below Road Surface and a Short Piece of Reinforcing Steel Above the Monument
DATE
 left monument as found, lowered monument, removed monument (explain)
- On Sep. 1, 1972 placed a Minnesota Highway Department Cast Iron Monument Above the Granite Monument and 0.2' below Road Surface
DATE



Statement of evidence relative to this corner location is on back of page.

I hereby certify that this document and the data contained herein was prepared by me or under my direct supervision.

Jesse E. Fant 4/3/74
SIGNATURE DATE

Registration No. 3230
 Land Surveyor, Professional Engineer
 County Surveyor, County Engineer

OFFICE OF THE REGISTER OF DEEDS
 County of Yellow Medicine

I hereby certify that this document was filed in the Reg. of Deeds office at 3:30 P.M. on the 19 day of April A.D., 1974

Register of Deeds Norman J. Opdahl
 By Kay Nerdahl, Deputy
 DOCUMENT NO. 163248

Statement of Evidence: NORTHEAST CORNER SECTION 29, T115N, R39W, 5TH P.M.

The original Public Land Survey was completed in 1864 by Charles E. Davis and J. W. Webb Jr. A wood post was set in a dirt mound with pits to mark the corner.

In 1901, John Norgaard, County Surveyor, found a stone at the intersection of roads which was set by adjoining landowners in the government mound. He set a 6" x 6" x 24" granite monument at this location at that time.

Records in the County Engineer's Office show that this granite monument has been found and used as a section corner prior to 1937, in 1937 and again in 1959 when an iron was placed over the granite monument.

A short piece of reinforcing steel was found over the granite monument in the 1971 excavation and was removed.

An analysis of this data provides a continuous chain of record perpetuating the location of the original Public Land Survey corner.

For details of survey analysis and 1973 electronic survey measurements, see Survey Report for S.P. 8701-18 from 0.3 miles North of the Yellow Medicine River to Granite Falls on file in the Surveys Section, Minnesota Highway Department, Willmar, Minnesota.