

# CERTIFICATE OF LOCATION OF GOVERNMENT CORNER

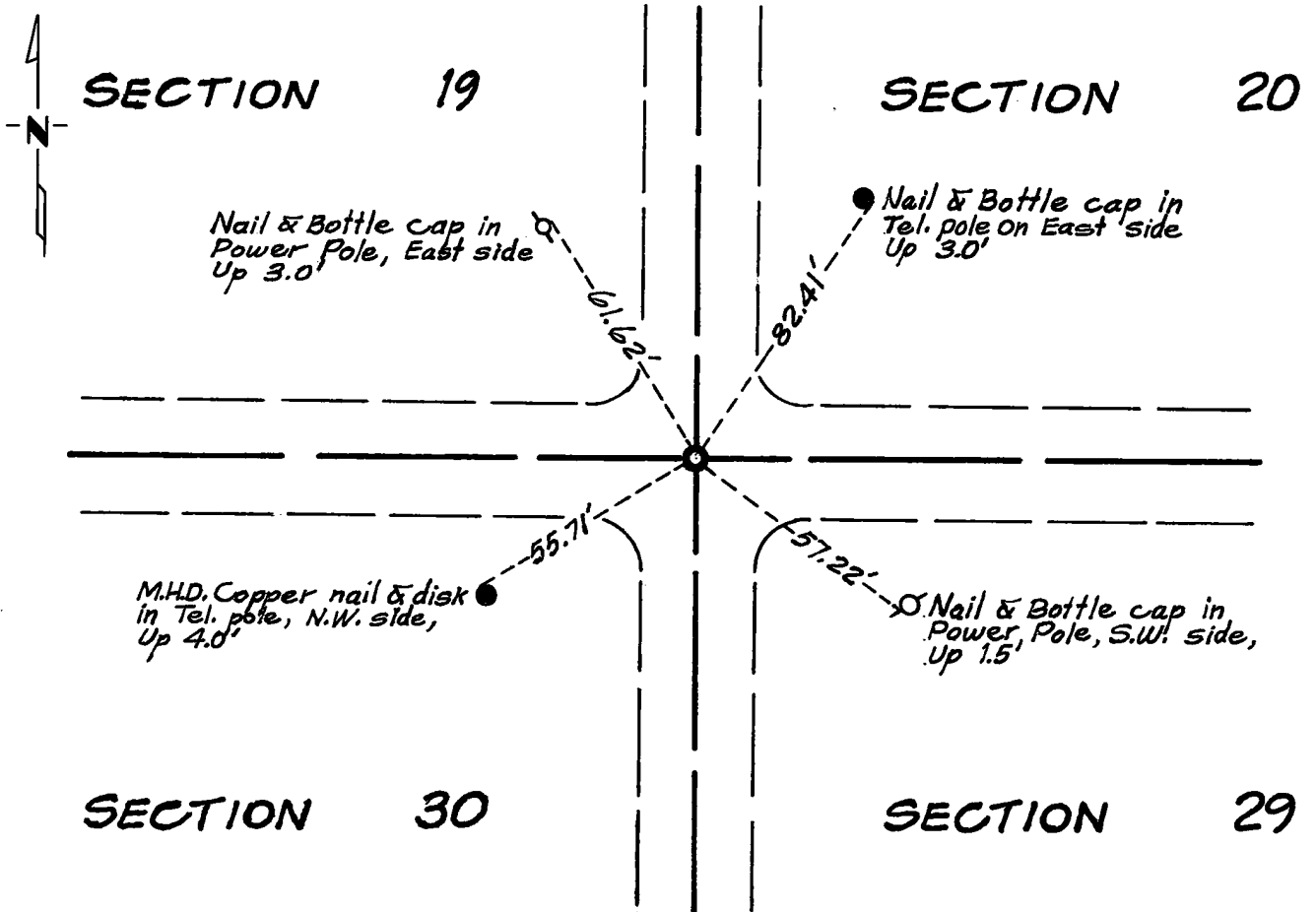
Northeast Corner of Section 30, Township 115 N, Range 39 W, 5th P.M.

STATE OF MINNESOTA, County of Yellow Medicine

At the corner location shown on the sketch:

- On Sept. 29, 1971 found a 6" x 6" x 24" Granite Monument 3.0' Below Surface - Also A Piece Of Reinforcing Steel On South Side Of Monument And An 8" x 8" x 3" Stone Above Monument  
 left monument as found,  lowered monument,  removed monument (explain)
- On Sept. 1, 1972 placed a Minnesota Highway Department Cast Iron Monument Above Granite Monument And 0.4' Below Road Surface

SKETCH OF REFERENCE TIES



Statement of evidence relative to this corner location is on back of page.

I hereby certify that this document and the data contained herein was prepared by me or under my direct supervision.

John E. Swenor 4-5-74  
SIGNATURE DATE

Registration No. 10460

- Land Surveyor,  Professional Engineer
- County Surveyor,  County Engineer

OFFICE OF THE REGISTER OF DEEDS  
County of Yellow Medicine

I hereby certify that this document was filed in the Reg. of Deeds office at 3:35 P.M. on the 19 day of April A.D., 19 74

Register of Deeds Norman J. Opdahl

By Kay Nordahl, Deputy

DOCUMENT NO. 163249

Statement of Evidence: NORTHEAST CORNER SECTION 30, T115N, R39W, 5TH P.M.

The original Public Land Survey was completed in 1864 by Charles E. Davis and J. W. Webb Jr. A wood post was set in a mound of dirt with pits to mark the corner.

In 1901, John Norgaard, County Surveyor found a stone and a stake in the government mound. He placed a 6" x 6" x 24" granite monument in the government mound at that time.

Records in the County Engineer's Office show that this monument was found and used as a section corner in 1959.

An analysis of this data provides a continuous chain of record perpetuating the location of the original Public Land Survey corner.

For details of survey analysis and 1973 electronic survey measurements, see Survey Report for S.P. 8701-18 from 0.3 miles North of the Yellow Medicine River to Granite Falls on file in the Surveys Section, Minnesota Highway Department, Willmar, Minnesota.