

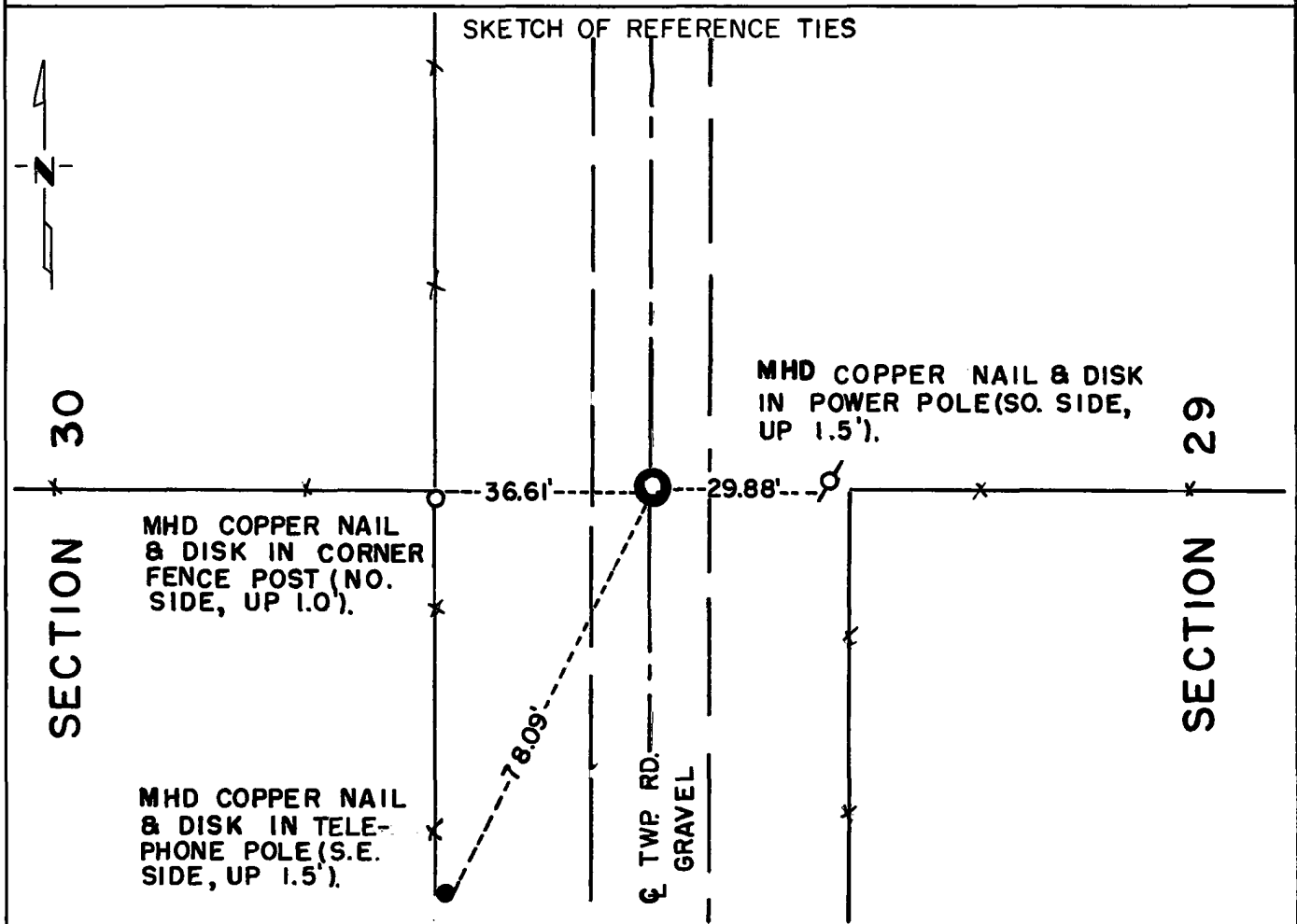
CERTIFICATE OF LOCATION OF GOVERNMENT CORNER

East Quarter Corner of Section 30, Township 115N, Range 39W, 5th P.M.

STATE OF MINNESOTA, County of Yellow Medicine

At the corner location shown on the sketch:

- On Nov. 1, 1972 found a mound of rocks all about 6"x6"x8" in size at the
DATE
centerline of N/S road and on line with E/W fence line down 2.0'.
 - left monument as found, lowered monument, removed monument (explain)
- On Nov. 3, 1972 placed a M.H.D. Cast Iron Monument 0.3' below road surface.
DATE



Statement of evidence relative to this corner location is on back of page.

I hereby certify that this document and the data contained herein was prepared by me or under my direct supervision.

Jesse E. Fant 4/2/74
SIGNATURE DATE

Registration No. 3230
 Land Surveyor, Professional Engineer
 County Surveyor, County Engineer

OFFICE OF THE REGISTER OF DEEDS
 County of Yellow Medicine

I hereby certify that this document was filed in the Reg. of Deeds office at 3:40 P.M. on the 19 day of April A.D., 1974

Register of Deeds Norman J. Opdahl
 By Kay Nordahl, Deputy
 DOCUMENT NO. 163250

Statement of Evidence: EAST QUARTER CORNER SECTION 30, T115N, R39W, 5TH P.M.

The original Public Land Survey was completed in 1864 by Charles E. Davis and J. W. Webb Jr. A wood post was set in a mound of dirt with pits to mark the corner.

In 1916, John Norgaard, County Surveyor, positioned the quarter corner on line with the fence running west. In 1927, he positioned the quarter corner in the same location. In 1937, he positioned the quarter corner on line with the fence running west and on the west edge of an old road grade which was 20 ft. east of the line between the NE and SE section corners.

The origin of the mound of stones, found in the 1972 excavation, could not be determined.

An analysis of the record data compared to the 1972 field measurements indicates the mound of stones is in agreement with past surveys and with present occupation lines and is accepted as the location of the quarter-corner.

For details of survey analysis and the 1972 electronic survey measurements see Survey Report for S.P. 8701-18 from 0.3 miles North of the Yellow Medicine River to Granite Falls on file in the Surveys Section, Minnesota Highway Department, Willmar, Minnesota.