

# CERTIFICATE OF LOCATION OF GOVERNMENT CORNER

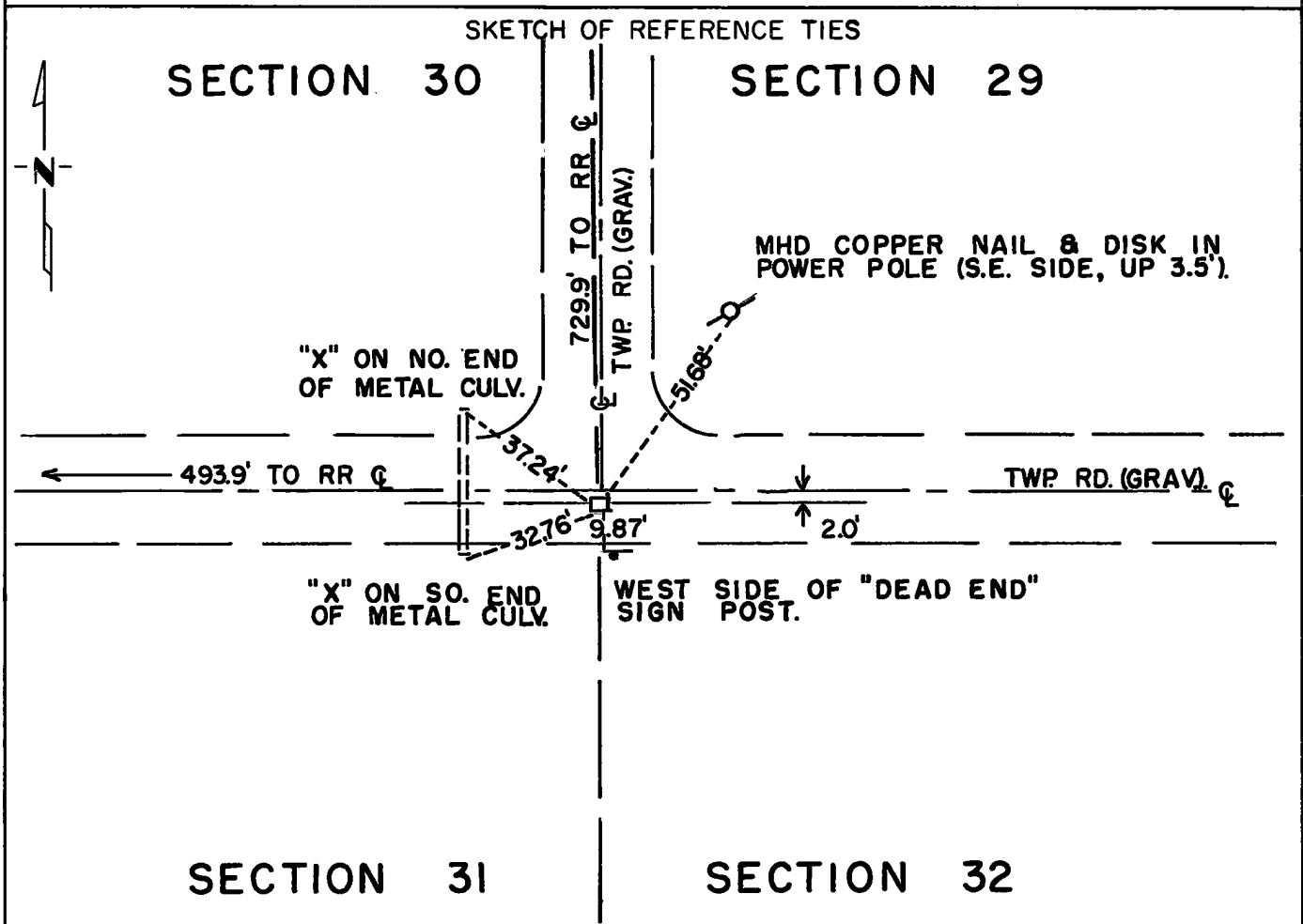
Northeast Corner of Section 31, Township 115N, Range 39W, 5th P.M.  
 STATE OF MINNESOTA, County of Yellow Medicine

At the corner location shown on the sketch:

On Sept. 29, 1971 found a 6" x 6" x 24" Granite Monument 4" below road surface.  
DATE

left monument as found,  lowered monument,  removed monument (explain)

On Sept. 29, 1971 placed a laid a large nail on top of monument  
DATE



Statement of evidence relative to this corner location is on back of page.

I hereby certify that this document and the data contained herein was prepared by me or under my direct supervision.

John E. Swenson 4-5-74  
SIGNATURE DATE

Registration No. 10460

Land Surveyor,  Professional Engineer

County Surveyor,  County Engineer

OFFICE OF THE REGISTER OF DEEDS  
 County of Yellow Medicine

I hereby certify that this document was filed in the Reg. of Deeds office at 3:45 P.M. on the 19 day of April A.D., 19 74

Register of Deeds Norman J. Opdahl

By Kay Nordahl, Deputy

DOCUMENT NO. 163251

Statement of Evidence:    NORTHEAST CORNER SECTION 31, T115N, R39W, 5TH P.M.

The original Public Land Survey was completed in 1864 by Charles E. Davis and J. W. Webb Jr. and a wood post in a mound of dirt with pits was set to mark the section corner.

In 1901, John Norgaard, County Surveyor, re-established this corner at equal proportional distances between the southeast corner of Section 29 and the Southwest corner of Section 30 and in the center of an east/west road. He stated that the government mound was located in the center of the road when the grading was done. He set a 6" x 6" x 24" granite monument at this location.

According to an old Burlington-Northern Railroad profile map, date unknown, the distance from the centerline of the tracks to the section corner in an easterly direction is 491.8 ft. The 1971 field measurement for this distance was 493.9 ft. The railroad profile shows the distance from the centerline of the tracks to the section corner in a southerly direction as being 755.0 ft. The 1971 distance is 729.9 ft. as measured along the north/south section line. The distance is 755 ft. as measured along the centerline of the north/south township road which diverges from the section line in an easterly direction.

The present location of the granite monument fits the occupation lines and the Burlington-Northern Railroad profile map and has marked the corner location for over 70 years. The in-place granite monument is accepted as the location of the corner.

For 1973 electronic survey measurements, See Survey Report for S.P. 8701-18 from 0.3 miles North of the Yellow Medicine River to Granite Falls on file in the Surveys Section, Minnesota Highway Department, Willmar, Minnesota.