

CERTIFICATE OF LOCATION OF GOVERNMENT CORNER

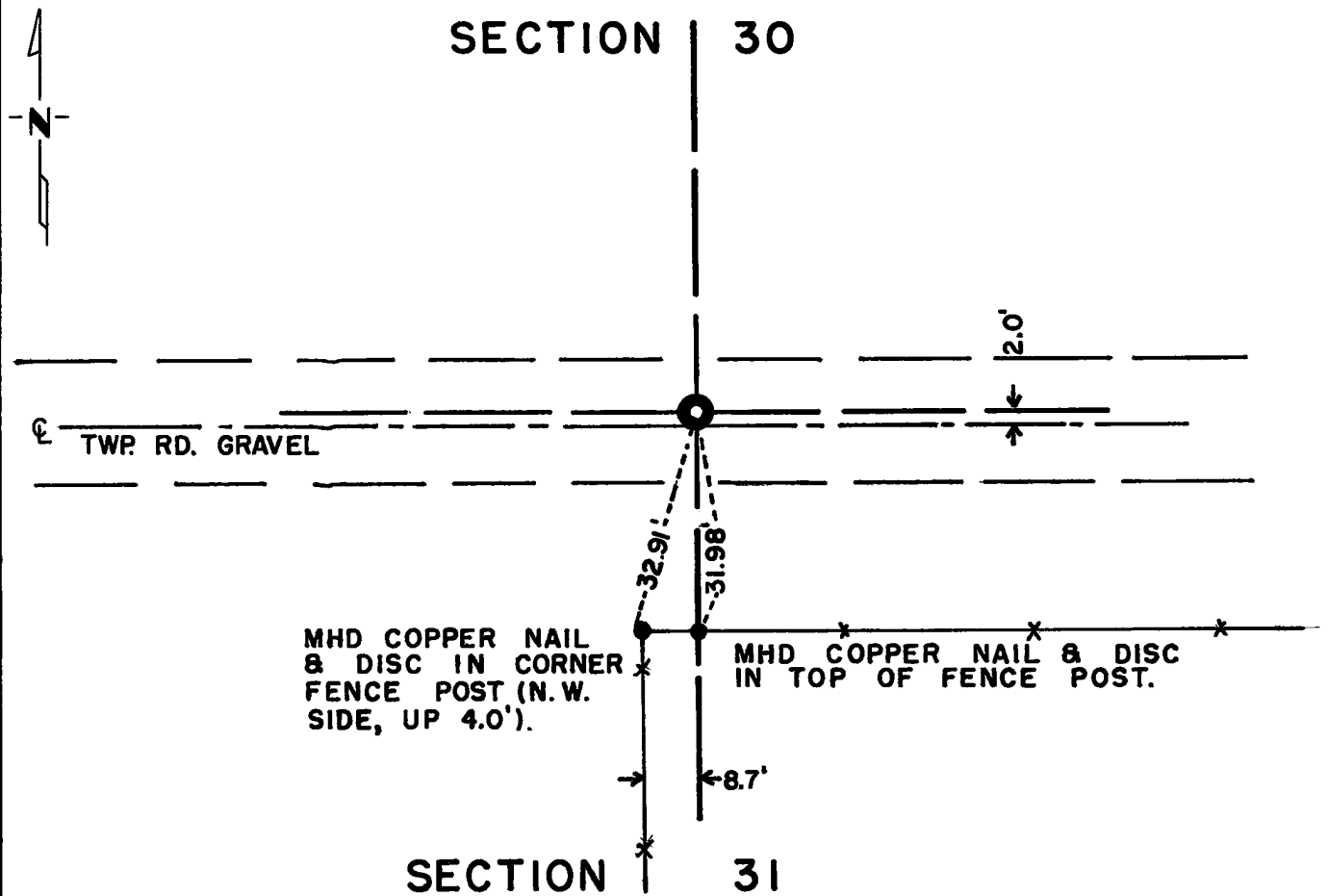
North Quarter Corner of Section 31, Township 115N, Range 39W, 5th P.M.

STATE OF MINNESOTA, County of Yellow Medicine

At the corner location shown on the sketch:

- On _____ found a _____
DATE
- left monument as found, lowered monument, removed monument (explain)
- On June 4, 1973 placed a Minnesota Highway Department cast iron monument about
DATE 4" below road surface

SKETCH OF REFERENCE TIES



Statement of evidence relative to this corner location is on back of page.

I hereby certify that this document and the data contained herein was prepared by me or under my direct supervision.

Jesse E. Fant 4/2/74
SIGNATURE DATE

Registration No. 3230
 Land Surveyor, Professional Engineer
 County Surveyor, County Engineer

OFFICE OF THE REGISTER OF DEEDS
County of Yellow Medicine

I hereby certify that this document was filed in the Reg. of Deeds office at 3:50 P.M. on the 19 day of April A.D., 1974

Register of Deeds Norman G. Opdahl
By Kay Nerdahl, Deputy
DOCUMENT NO. 163252

Statement of Evidence: NORTH QUARTER CORNER SECTION 31, T115N, R39W, 5TH P.M.

The original Public Land Survey was completed in 1864 by Charles E. Davis and J. W. Webb Jr. A wood post was set in a mound of dirt with pits to mark the corner.

In 1917, John Norgaard, County Surveyor, set a stone at equal proportioned distances between the northwest and northeast corners of the section.

On September 29, 1971 an excavation was made 3 ft. east, 3 ft. west, 3 ft. north and 3 ft. south of the intersection of the N/S fence line and the centerline of the township road to a depth of 5 ft. and nothing was found. Natural ground is approximately 4 ft. below the road surface.

On June 4, 1973 an excavation was made 5 ft. east, 6 ft. west, 3 ft. north and 3 ft. south of the lost location of the corner to a depth of 5 ft. and nothing was found. Natural ground is approximately 4 ft. below the road surface.

Tolerius Velde, who has owned the NW $\frac{1}{4}$ of Sec. 31, T115N, R39W for the past 36 years and has lived in this area for 82 $\frac{1}{2}$ years, stated that the quarter corner should be somewhat east of the N/S fence line south.

The quarter-corner established by lost methods, which positions it 8.7 feet east of the N/S fence line south and 2 feet north of the centerline of the township road.

For 1973 electronic survey measurements, see Survey Report for S.P. 8701-18 from 0.3 miles North of the Yellow Medicine River to Granite Falls on file in the Surveys Section, Minnesota Highway Department, Willmar, Minnesota.