

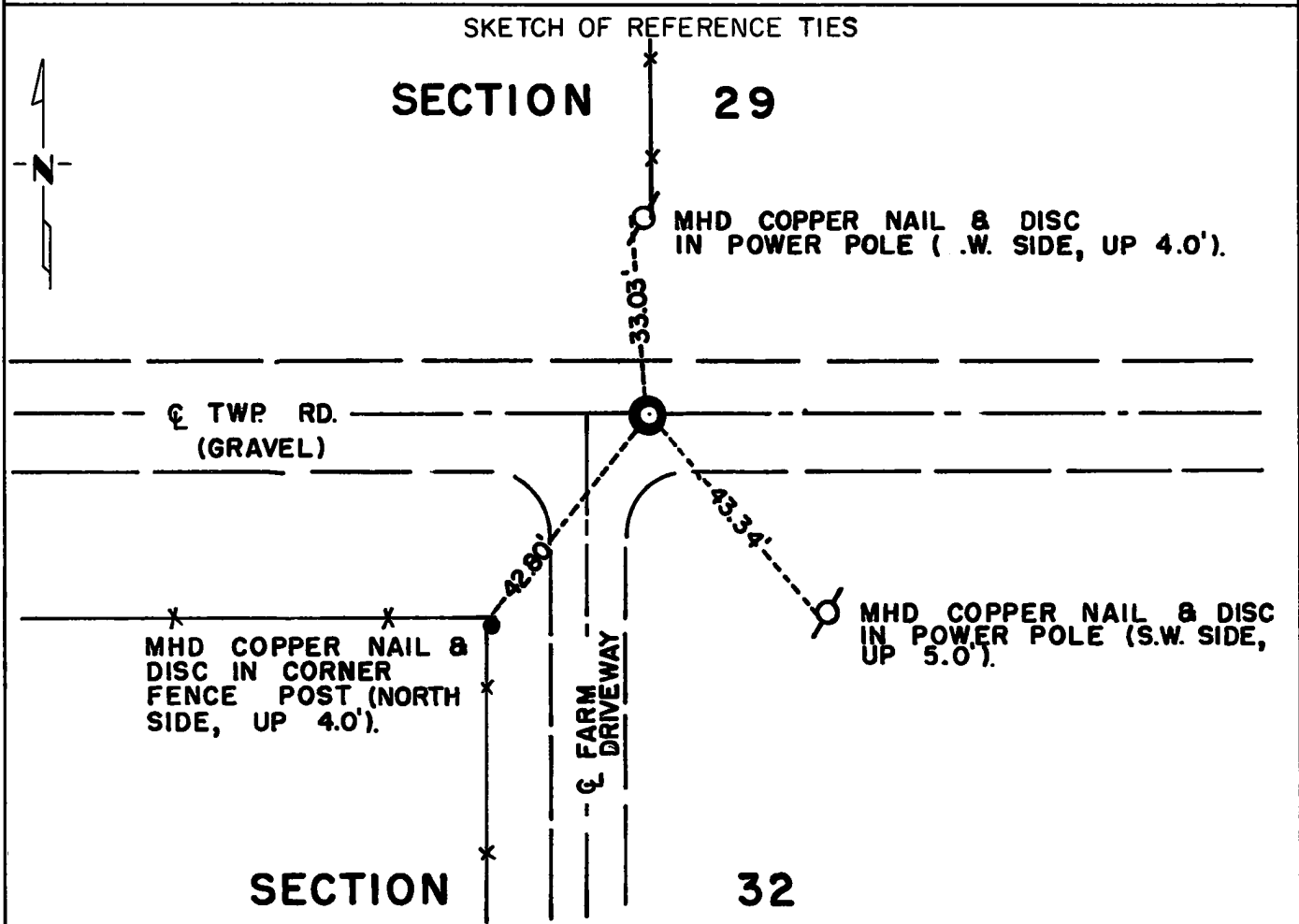
CERTIFICATE OF LOCATION OF GOVERNMENT CORNER

North Quarter _____ Corner of Section 32, Township 115N, Range 39W, 5th P.M.

STATE OF MINNESOTA, County of Yellow Medicine

At the corner location shown on the sketch:

- On Oct. 20, 1971 found a 1" diameter by 18" iron pipe 4 ft. below the road surface
DATE
- left monument as found, lowered monument, removed monument (explain)
- On June 5, 1973 placed a Minnesota Highway Department cast iron monument 4" below the road surface
DATE



Statement of evidence relative to this corner location is on back of page.

I hereby certify that this document and the data contained herein was prepared by me or under my direct supervision.

Jesse E. Fant 4/3/74
SIGNATURE DATE

Registration No. 3230

- Land Surveyor, Professional Engineer
- County Surveyor, County Engineer

OFFICE OF THE REGISTER OF DEEDS
 County of Yellow Medicine

I hereby certify that this document was filed in the Reg. of Deeds office at 3:55 P.M. on the 19 day of April A.D., 19 74

Register of Deeds Norman J. Opdahl

By Kay Nordahl, Deputy

DOCUMENT NO. 163253

Statement of Evidence: NORTH QUARTER CORNER, SEC. 32, T115N, R39W, 5TH P.M.

The original Public Land Survey was completed in 1864 by Charles E. Davis and J. W. Webb Jr. A wood post was set in a mound of dirt with pits to mark the corner.

In 1913, John Norgaard, County Surveyor, re-established this quarter corner equal distances between section corners. He set an iron bolt and stone at that location.

In 1927, John Norgaard recovered this monument and indicates in his notes that it is equi-distant between section corners.

The origin of the iron pipe found in 1971 could not be determined. The pipe is on line with a fence running north and at the approximate centerline of the township road running east and west.

The 1972 electronic distance from the northwest corner of the section to the north quarter corner is 1.6 ft. shorter than that distance shown in John Norgaard's notes of 1927.

The position of the iron pipe in relation to the occupation lines and the close agreement with John Norgaard's survey of 1927 indicates the iron pipe is at the accepted location of the Public Land Survey corner.

For 1972 electronic survey measurements, see Survey Report for S.P. 8701-18 from 0.3 miles North of the Yellow Medicine River to Granite Falls on file in the Surveys Section, Minnesota Highway Department, Willmar, Minnesota.