

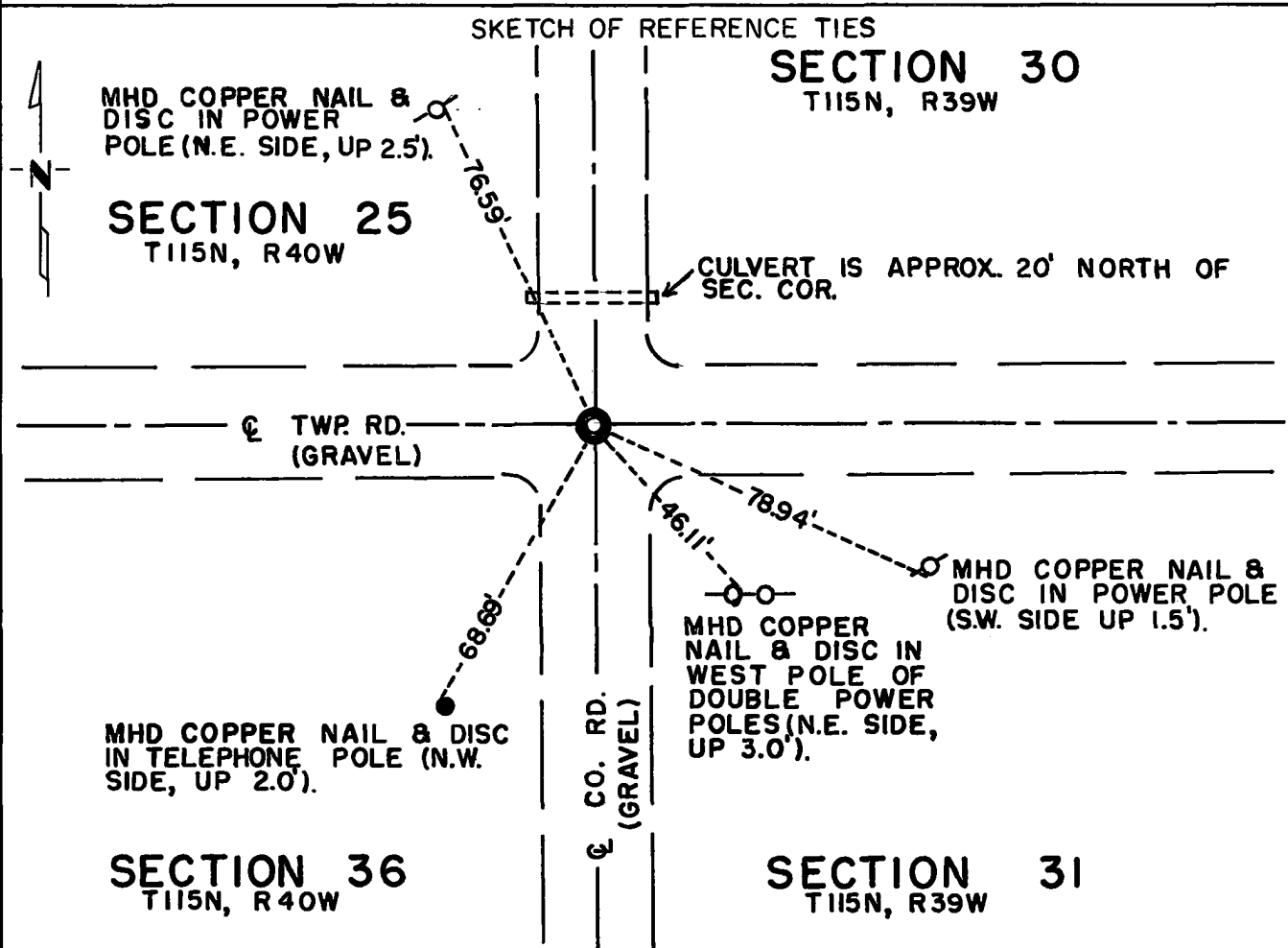
# CERTIFICATE OF LOCATION OF GOVERNMENT CORNER

Northeast Corner of Section 36, Township 115N, Range 40W, 5th P.M.

STATE OF MINNESOTA, County of Yellow Medicine

At the corner location shown on the sketch:

- On Sep. 29, 1971 found a 6" x 6" x 24" Granite Monument 3.0' Below Road Surface  
DATE  
There Were Five Large Stones Piled On Top Of The Monument
  - left monument as found,  lowered monument,  removed monument (explain)
- On Sep. 1, 1972 placed a Minnesota Highway Department Cast Iron Monument Above  
DATE  
Granite Monument And 0.2' Below Road Surface



Statement of evidence relative to this corner location is on back of page.

I hereby certify that this document and the data contained herein was prepared by me or under my direct supervision.

John E. Suena 4-5-74  
SIGNATURE DATE

Registration No. 10460

- Land Surveyor,  Professional Engineer
- County Surveyor,  County Engineer

OFFICE OF THE REGISTER OF DEEDS  
 County of Yellow Medicine

I hereby certify that this document was filed in the Reg. of Deeds office at 4:00 P.M. on the 19 day of April A.D., 19 74

Register of Deeds Norman J. Opdahl

By Kary Nordahl, Deputy

DOCUMENT NO. 163254

Statement of Evidence:    NORTHEAST CORNER SECTION 36, T115N, R40W, 5TH P.M.

The original Public Land Survey was completed in 1864 by Charles E. Davis and J. W. Webb Jr. and a wood post was set in a dirt mound with pits to mark the corner.

In 1901, John Norgaard, County Surveyor, found a stone and stake set by adjoining landowners in the government mound. He set a 6" x 6" x 24" granite monument at this location.

Information in the County Engineer's Office shows that the granite monument was found in 1928, in 1937, in 1939 and again in 1964 when an iron monument was placed above the granite monument.

The iron monument was not found during the 1972 excavation. However, five large field stones piled on top of the granite monument were found.

An analysis of this data provides a continuous chain of record perpetuating the location of the original Public Land Survey corner.

For details of survey analysis and 1972 electronic survey measurements see Survey Report for S.P. 8701-18 from 0.3 miles North of the Yellow Medicine River to Granite Falls on file in the Survey Section, Minnesota Highway Department, Willmar, Minnesota.