

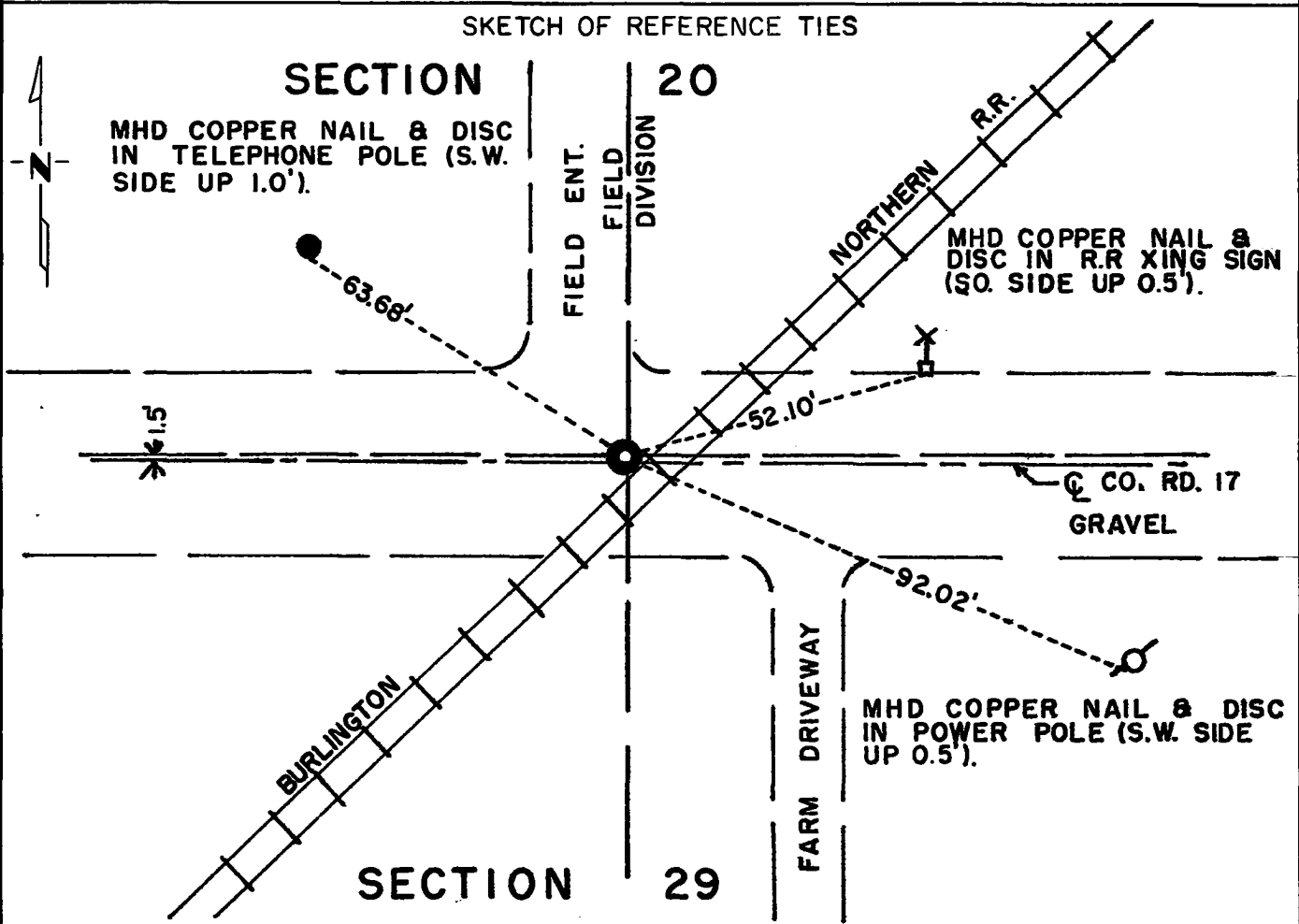
# CERTIFICATE OF LOCATION OF GOVERNMENT CORNER

North Quarter \_\_\_\_\_ Corner of Section 29, Township 115N, Range 39W, 5th P.M.

STATE OF MINNESOTA, County of Yellow Medicine

At the corner location shown on the sketch:

- On \_\_\_\_\_ DATE found a \_\_\_\_\_
- left monument as found,  lowered monument,  removed monument (explain)
- On June 5, 1973 DATE placed a Minnesota Highway Department Cast Iron Monument 0.6 feet below road surface



Statement of evidence relative to this corner location is on back of page.

I hereby certify that this document and the data contained herein was prepared by me or under my direct supervision.

Jesse E. Fant SIGNATURE      4/16/74 DATE

Registration No. 3230  
 Land Surveyor,  Professional Engineer  
 County Surveyor,  County Engineer

OFFICE OF THE REGISTER OF DEEDS  
 County of Yellow Medicine

I hereby certify that this document was filed in the Reg. of Deeds office at 3:15 P .M. on the 25 day of April A.D., 19 74

Register of Deeds Norman J. Opdahl  
 By Kay Nerdahl, Deputy  
 DOCUMENT NO. 103269

Statement of Evidence: NORTH QUARTER CORNER SECTION 29, T115N, R39W, 5TH P.M.

The original Public Land Survey was completed in 1864 by Charles E. Davis and J. W. Webb Jr. A wood post was set in a mound of dirt with pits to mark the corner.

John Norgaard, County Surveyor, located the quarter corner at the intersection of the centerline of the railroad with the centerline of the East-West road in 1916. In a survey that John Norgaard made in 1927, the quarter corner was located at equal distances between the Northeast and Northwest section corners.

On November 3, 1972, the ground was excavated to a depth of 3 feet from 4 feet North to 4 feet South and from 2 feet East to 6 feet West of the lost location for the corner. The natural ground is about 2 feet below the road surface. No physical evidence of a monument was found in this excavation.

The corner was established at the lost location which positions it 2.9 feet West of the extension of a fence line South, 1.5 feet North of the centerline of the county road and approximately on line with a field division North. It is 2.0 feet West of the West rail of the Burlington-Northern, Inc. railroad track.

For 1973 electronic survey measurements, see Survey Report fo SP 8701-18 from 0.3 miles North of the Yellow Medicine River to Granite Falls on file with the Surveys Section, Minnesota Highway Department, Willmar, Minnesota.