

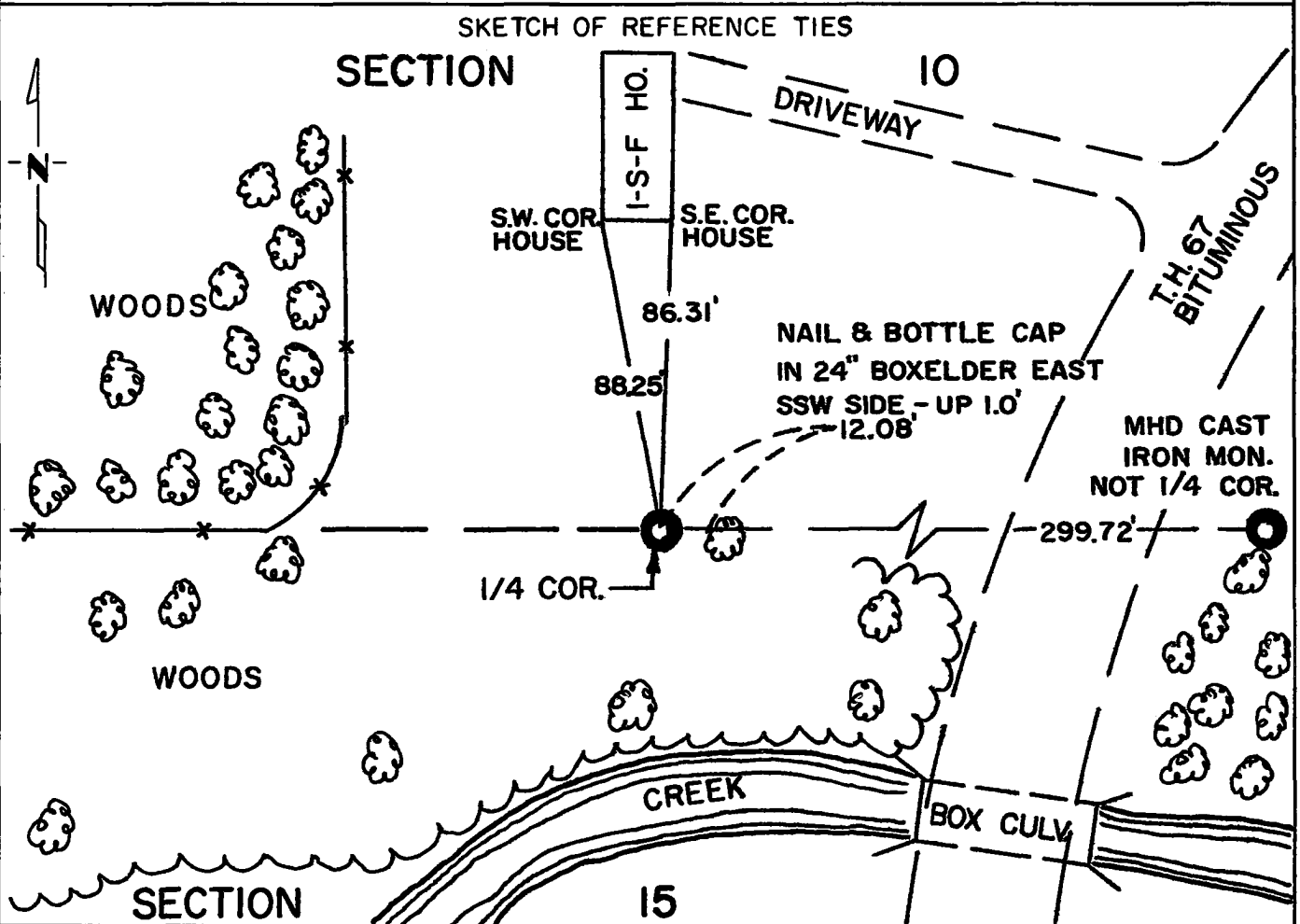
# CERTIFICATE OF LOCATION OF GOVERNMENT CORNER

North Quarter Corner of Section 15, Township 115N, Range 39W, 5th P.M.

STATE OF MINNESOTA, County of Yellow Medicine

At the corner location shown on the sketch:

- On Oct. 12, 1973 found a 8 inch x 8 inch x 24 inch Stone 1.0' below ground  
DATE surface
- left monument as found,  lowered monument,  removed monument (explain)
- On May 24, 1973 placed a Minnesota Highway Department Cast Iron Monument  
DATE over stone



Statement of evidence relative to this corner location is on back of page.

I hereby certify that this document and the data contained herein was prepared by me or under my direct supervision.

Jesse E. Fant 4/16/74  
SIGNATURE DATE

Registration No. 3230

- Land Surveyor,  Professional Engineer
- County Surveyor,  County Engineer

OFFICE OF THE REGISTER OF DEEDS  
 County of Yellow Medicine

I hereby certify that this document was filed in the Reg. of Deeds office at 3:20 P.M. on the 25 day of April A.D., 1974

Register of Deeds Norman J. Opdahl

By Kay Nerdahl, Deputy

DOCUMENT NO. 163270

Statement of Evidence: NORTH QUARTER CORNER SECTION 15, T115N, R39W, 5TH P.M.

The original Public Land Survey was completed in 1864 by Charles E. Davis and J. W. Webb Jr. when a wood post was set to mark this quarter corner.

O. Quam used the wood post for a survey in 1874.

John Norgaard, County Surveyor, set a stone at the quarter corner according to the stumps of the government bearing trees, sometime prior to 1912. He used this stone for subsequent surveys that he made in this area in 1912, 1914, 1918, 1926, 1929 and 1930.

An analysis of this data provides a continuous chain of record perpetuating the location of the original Public Land Survey corner.

For details of survey analysis and electronic survey measurements, see Survey Report for SP 8701-18 from 0.3 miles North of the Yellow Medicine River to Granite Falls on file in the Surveys Section, Minnesota Highway Department, Willmar, Minnesota.