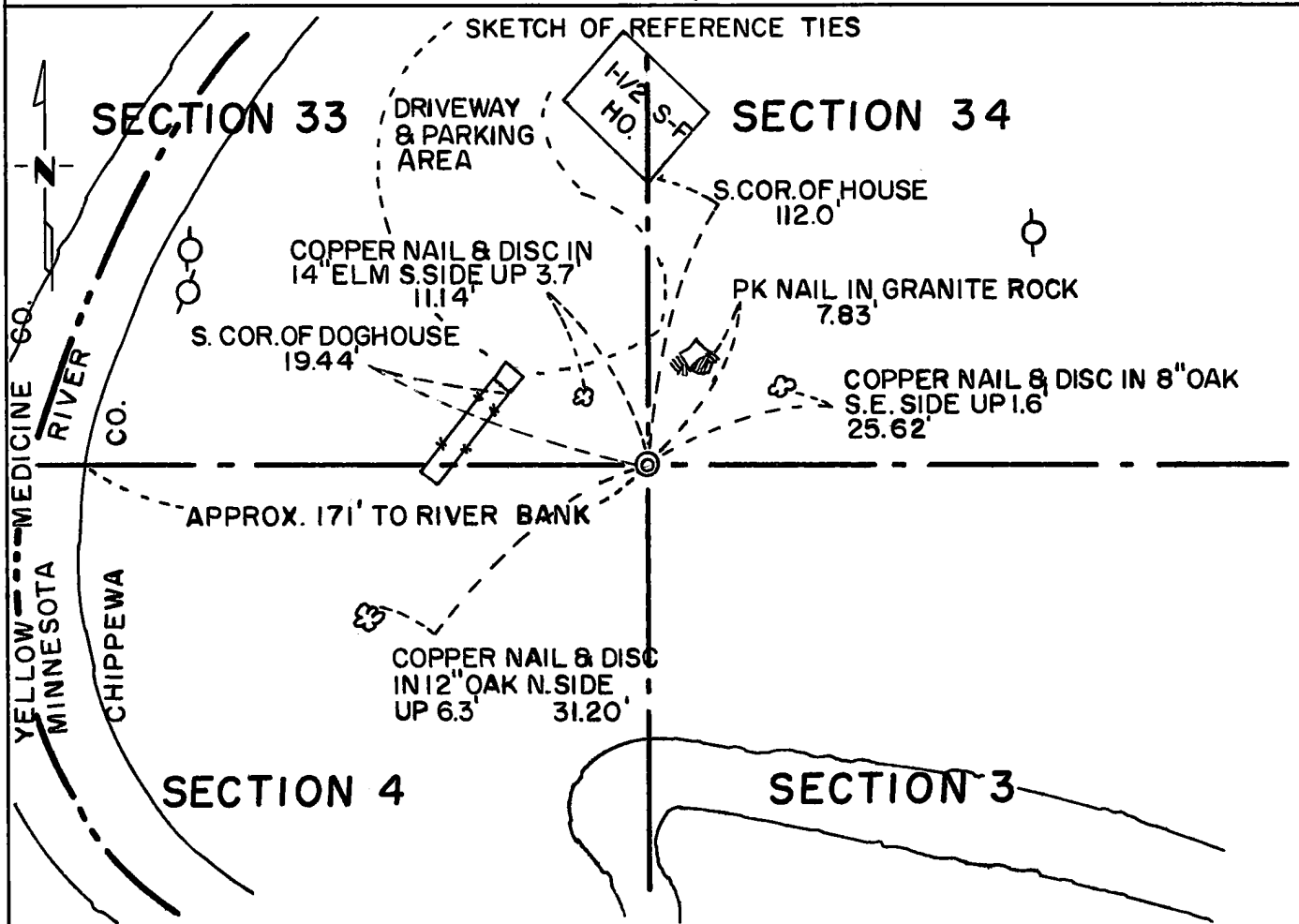


CERTIFICATE OF LOCATION OF GOVERNMENT CORNER

Northeast Corner of Section 4, Township 115N, Range 39W, 5th P.M.
STATE OF MINNESOTA, County of Chippewa

At the corner location shown on the sketch:

- On Sept. 17, 1973 found a nothing found
DATE
- left monument as found, lowered monument, removed monument (explain)
- On May 3, 1974 placed a 3/4" x 24" iron pin with brass disc on top stamped
DATE "NE Cor. Sec. 4 T115N R39W"



Statement of evidence relative to this corner location is on back of page.

I hereby certify that this document and the data contained herein was prepared by me or under my direct supervision.

Jesse E. Fant 6/3/74
SIGNATURE DATE

Registration No. 3230

- Land Surveyor, Professional Engineer
- County Surveyor, County Engineer

OFFICE OF THE REGISTER OF DEEDS
County of Yellow Medicine

I hereby certify that this document was filed in the Reg. of Deeds office at 3:05 P.M. on the 18 day of June A.D., 19 74

Register of Deeds Norman J. Oydahl

By Kary Nordahl, Deputy

DOCUMENT NO. 163585

Statement of Evidence: NORTHEAST CORNER SECTION 4, T115N, R39W, 5th P.M.

The Public Land Survey of the township lines was completed in 1858 by W. J. Neely. A wood post was set to mark the corner and it was referenced to two bearing trees. A wood post was set in a mound of stones 2.68 chains west of the section corner to mark the meander corner on the left bank of the Minnesota River.

In 1874, L. R. Moyer surveyed along the north line of Section 3 and shows the distance from the North Quarter Corner of Section 3 to the Northeast Corner of Section 4 as being 2637.1 feet. He did not indicate what type of monument marked the position of the section corner.

Pillsbury's Second Addition to Granite Falls was platted in 1878. The plat showed the distance from the north quarter corner to the northeast section corner as being 2598.12 feet with the sixteenth corner being midway between. No reference was made as to the type of monument marking the northeast corner of the section.

A 1926 Minnesota Highway Department right-of-way map for Trunk Highway 67 shows the corner to be 534.2 feet east of a point on tangent engineer's station 781+05.7. The map did not indicate what type of monument was marking the corner.

No record evidence was found that any monuments marking the corner have been set since the original Public Land Survey.

Field searches for the corner have been made in recent years by a local land surveyor, county survey crews, and by three or four Minnesota Highway Department survey crews but nothing has been found that marks either the section corner or the meander corner west of it.

The quarter corners west and east were found, as were two block corners in Pillsbury's Second Addition that are on the section line and the sixteenth corner $\frac{1}{4}$ mile west.

The corner was set by a derivative method. It is on a line extending east from the quarter corner through the sixteenth corner and the block corners and 2598.12 feet east of the north quarter corner.

This position is 171 feet east of the east bank of the Minnesota River, 21.01 feet east and 37.07 feet north of the lost location.

For details of survey analysis, photographs taken during excavation, and 1973 electronic survey measurements, see Survey Report for S.P. 8701 from the Yellow Medicine River to Granite Falls on file in the Surveys Section, Minnesota Highway Department, Willmar, Minnesota.