

CERTIFICATE OF LOCATION OF GOVERNMENT CORNER

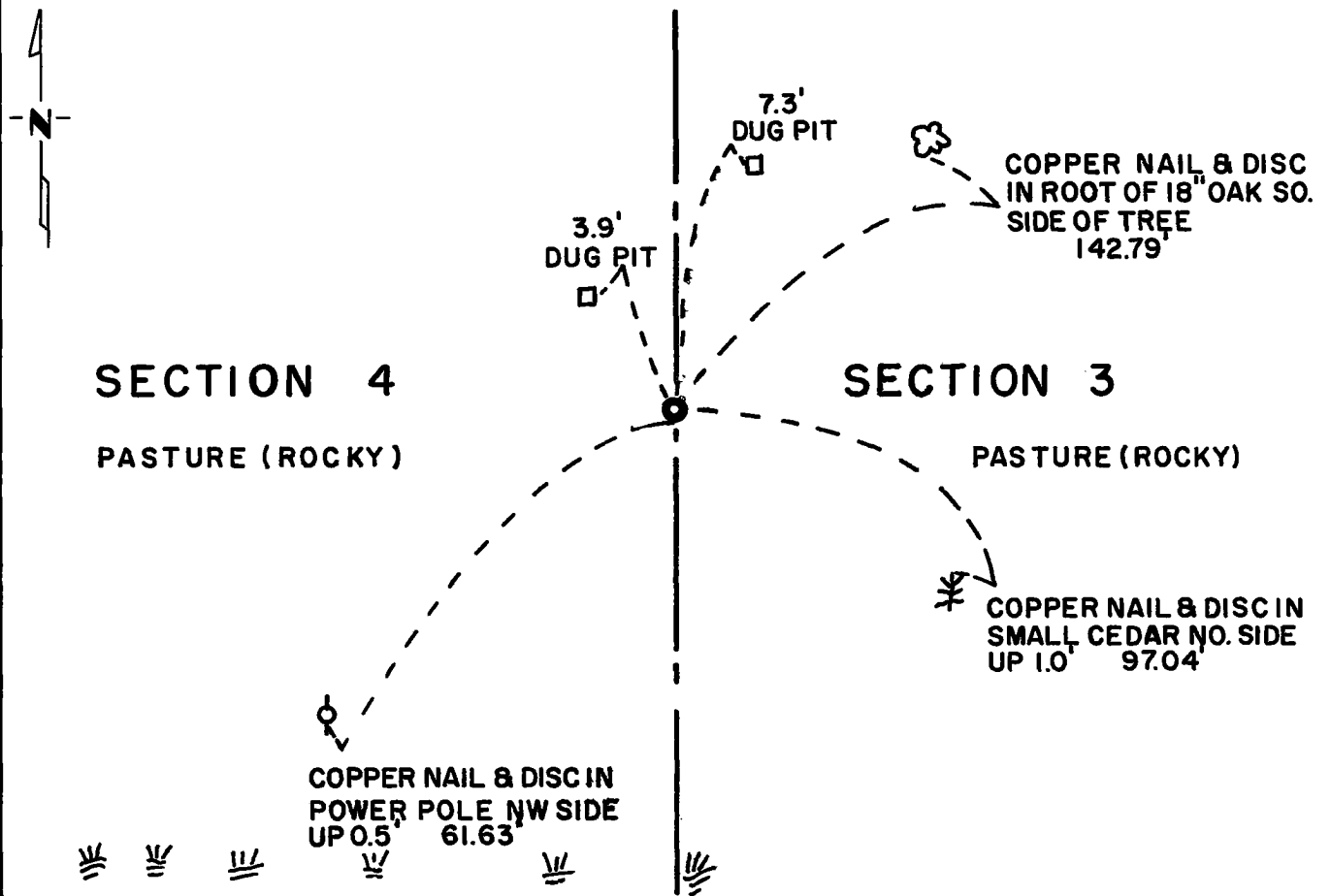
East Quarter _____ Corner of Section 4, Township 115N, Range 39W, 5th P.M.

STATE OF MINNESOTA, County of Yellow Medicine

At the corner location shown on the sketch:

- On Sept. 17, 1974 found a Nothing found
DATE
- left monument as found, lowered monument, removed monument (explain)
- On May 3, 1974 placed a Minnesota Highway Department Cast Iron Monument
DATE 3" above ground.

SKETCH OF REFERENCE TIES



Statement of evidence relative to this corner location is on back of page.

I hereby certify that this document and the data contained herein was prepared by me or under my direct supervision.

Cass E. Fant 6/3/74
SIGNATURE DATE

Registration No. 3230

- Land Surveyor, Professional Engineer
- County Surveyor, County Engineer

OFFICE OF THE REGISTER OF DEEDS
 County of Yellow Medicine

I hereby certify that this document was filed in the Reg. of Deeds office at 3:10 P.M. on the 18 day of June A.D., 1974

Register of Deeds Norman J. Opdahl

By Kay Nordahl, Deputy

DOCUMENT NO. 163586

Statement of Evidence: E $\frac{1}{4}$ COR. SEC. 4, T115N, R39W, 5th P.M.

The Public Land Survey was completed in 1864 by C. E. Davis and J. W. Webb, Jr. A wood post was set in a dirt mound with pits to mark the corner.

John Norgaard, County Surveyor, made a survey in this area in 1911. He claimed that a pile of stones marking the corner had been moved and therefore did not mark the corner position. The survey notes did not indicate whether he set a monument to mark the corner. His survey showed the distance from the center of section to the quarter corner to be 2560 feet, the distance from the south line of the NE $\frac{1}{4}$ of the NE $\frac{1}{4}$ to be 1306 feet and the distance from the southeast corner of the section to the quarter corner to be 2612 feet.

No other record evidence was found that any monuments have been set to mark the corner since the original Public Land Survey.

There are no occupation lines to indicate the ground position of the corner. It falls in rough, rocky pasture land. Minnesota Highway Department survey crews made field searches for the corner on two occasions but could not find anything marking the corner position.

The corner was set by a derivative method. An east-west fence line is in place on the south line of the NE $\frac{1}{4}$ of the NE $\frac{1}{4}$ and the southeast corner of the section is in place. The 1973 electronic distance between the two is 3918.47 feet as compared to Norgaard's 3918 feet. The corner was set 1306 feet south of the fence line on the south line of the NE $\frac{1}{4}$ of the NE $\frac{1}{4}$ and 2560 feet east of the computed position of the center of section. A lost location was not computed for this corner because the original Public Land Survey stopped at the south bank of the Minnesota River where a meander corner was set. The meander corner was not found.

For details of survey analysis, photographs taken during excavation, and 1973 electronic survey measurements, see Survey Report for S.P. 8701 from the Yellow Medicine River to Granite Falls on file in the Surveys Section, Minnesota Highway Department, Willmar, Minnesota.