

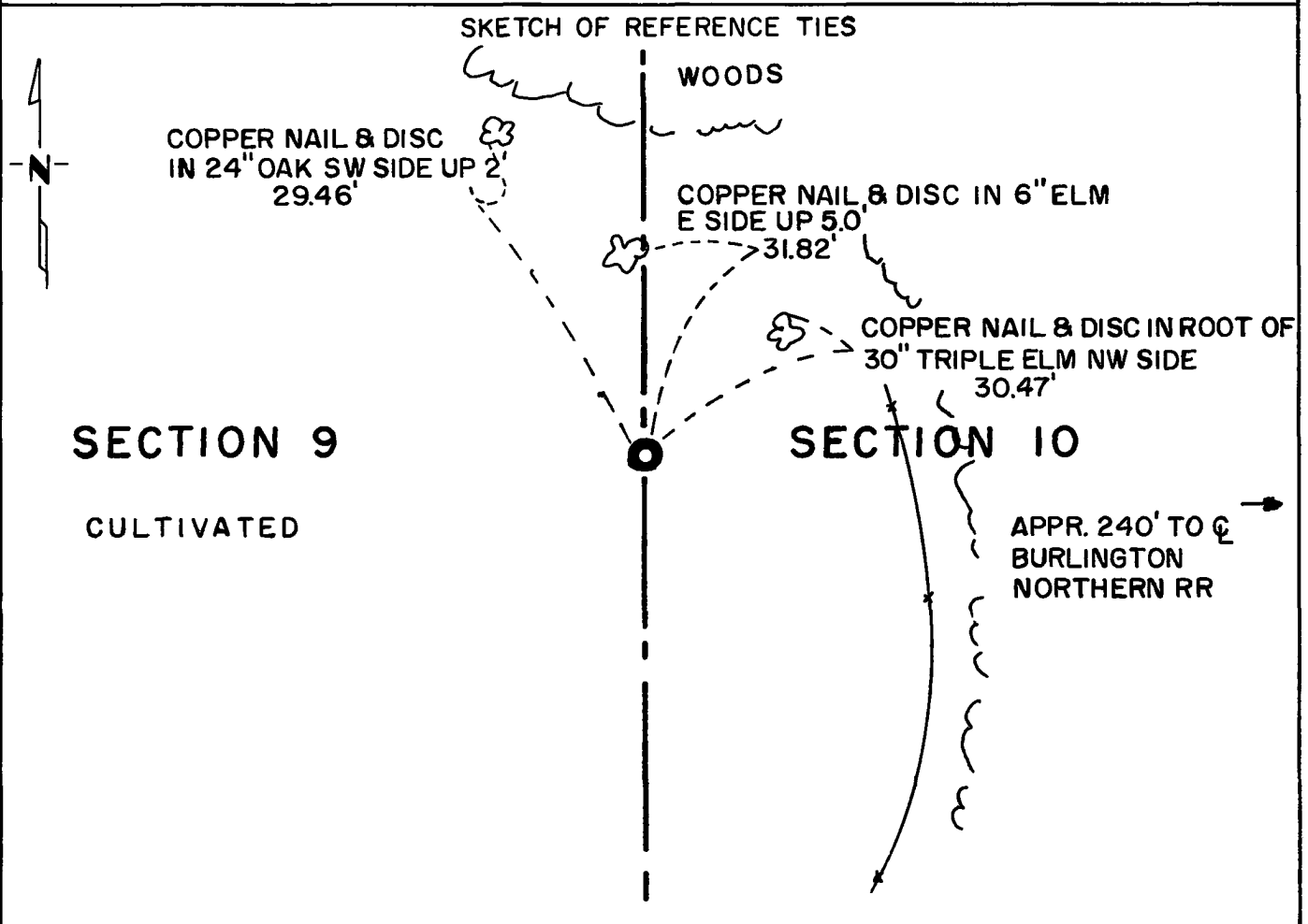
CERTIFICATE OF LOCATION OF GOVERNMENT CORNER

East Quarter _____ Corner of Section 9, Township 115N, Range 39W, 5th P.M.

STATE OF MINNESOTA, County of Yellow Medicine

At the corner location shown on the sketch:

- On _____ found a _____ nothing found
DATE
- left monument as found, lowered monument, removed monument (explain)
- On May 2, 1974 placed a Minnesota Highway Department cast iron monument,
DATE
18" below ground, stamped "E. QUARTER COR. SEC. 9".



Statement of evidence relative to this corner location is on back of page.

I hereby certify that this document and the data contained herein was prepared by me or under my direct supervision.

Jesse E. Fant 6/3/74
SIGNATURE DATE

Registration No. 3230

- Land Surveyor, Professional Engineer
- County Surveyor, County Engineer

OFFICE OF THE REGISTER OF DEEDS
County of Yellow Medicine

I hereby certify that this document was filed in the Reg. of Deeds office at 3:20 P.M. on the 18 day of June A.D., 19 74

Register of Deeds Norman J. Opdahl
By Kay Nerdahl, Deputy

DOCUMENT NO. 163588

Statement of Evidence: EAST QUARTER CORNER SECTION 9, T115N, R39W, 5th P.M.

The Public Land Survey was completed in 1864 by C. E. Davis and J. W. Webb, Jr. A wood post was set in a mound of dirt with pits to mark the corner.

Jonah Peterman did survey work along the east line of the section in 1883 and 1896. His dimensions along this line position the quarter corner 41.58 feet north of being midway between section corners; that is, 2723.16 feet north of the southeast corner of the section. Peterman did not show in his notes that he found or set anything to mark the corner.

A Burlington-Northern Railroad, Inc. profile map, date unknown, shows the corner to be 1196 feet north of engineer's station 1928+75. It did not show if there was anything in place to mark the corner.

No record evidence was found that any monuments marking the corner have been set since the original Public Land Survey.

The corner falls in a cultivated field; there are no occupation lines north, south, east or west to indicate where the corner may have been. The landowner said he has never seen any type of marker at the corner. No attempt was made to excavate for this corner because there is no indication on the ground as to its position.

The corner was set by a derivative method. Jonah Peterman's survey was proportioned and the corner was set on a line extending from the southeast corner of the section through the Burlington-Northern Railroad engineer's station 1928+75. This position is 5.3 feet east and 41.1 feet north of the lost location.

For details of survey analysis and 1973 electronic survey measurements, see Survey Report for S.P. 8701 from the Yellow Medicine River to Granite Falls on file in the Surveys Section, Minnesota Highway Department, Willmar, Minnesota.