

# CERTIFICATE OF LOCATION OF GOVERNMENT CORNER

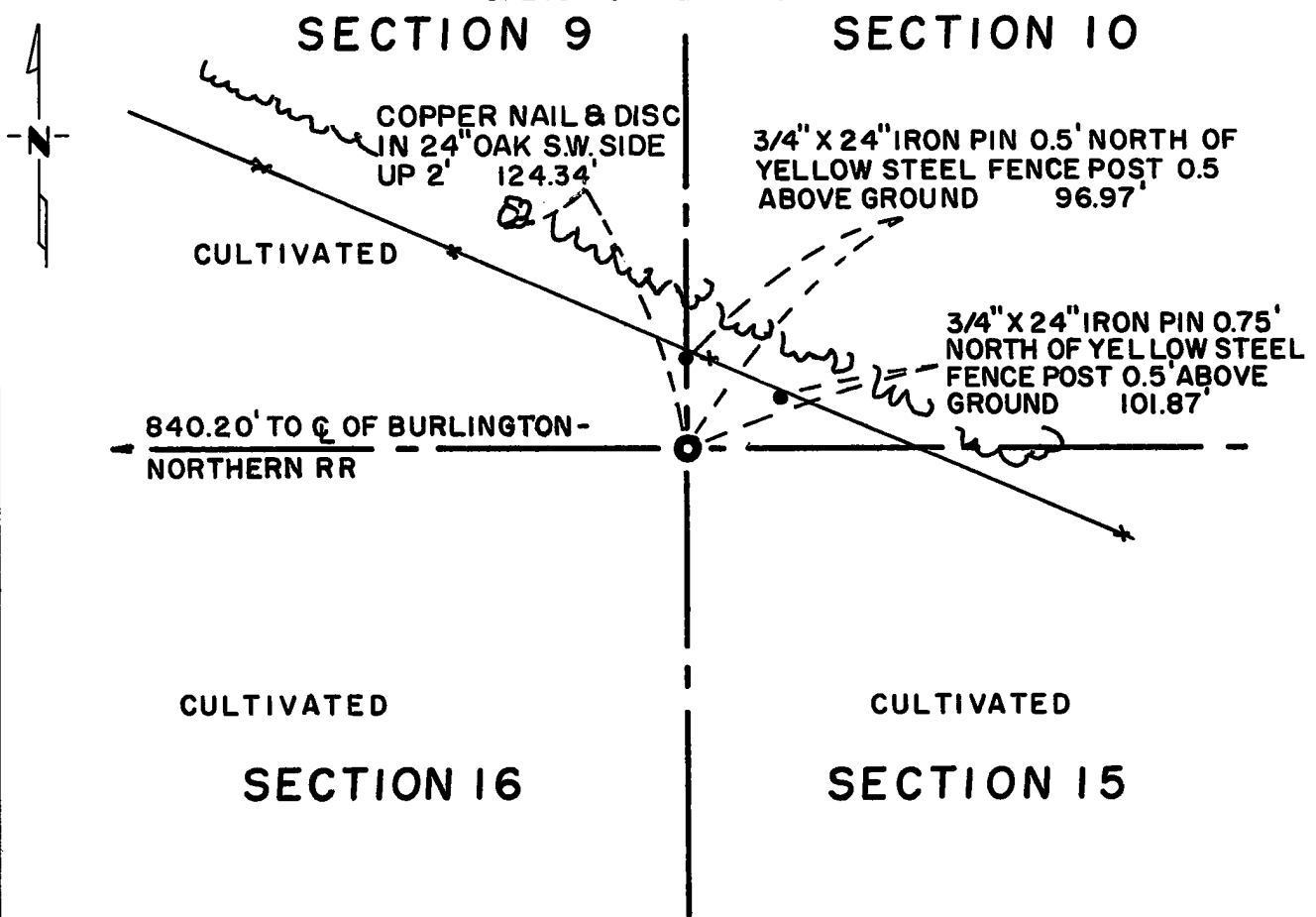
Northeast Corner of Section 16, Township 115N, Range 39W, 5th P.M.

STATE OF MINNESOTA, County of Yellow Medicine

At the corner location shown on the sketch:

- On \_\_\_\_\_ found a Nothing was found  
DATE \_\_\_\_\_
- left monument as found,  lowered monument,  removed monument (explain)
- On May 2, 1974 placed a Minnesota Highway Department Cast Iron Monument  
DATE                      Stamped 'NE Cor 16" down 16" below ground

SKETCH OF REFERENCE TIES



Statement of evidence relative to this corner location is on back of page.

I hereby certify that this document and the data contained herein was prepared by me or under my direct supervision.

Jesse E. Fant 6/3/74  
SIGNATURE DATE

Registration No. 3230

- Land Surveyor,  Professional Engineer
- County Surveyor,  County Engineer

OFFICE OF THE REGISTER OF DEEDS  
County of Yellow Medicine

I hereby certify that this document was filed in the Reg. of Deeds office at 3:25 P.M. on the 18 day of June A.D., 19 74

Register of Deeds Norman J. Opdahl

By Kay Mordahl, Deputy

DOCUMENT NO. 163589

Statement of Evidence: NORTHEAST CORNER SECTION 16, T115N, R39W, 5th P.M.

The Public Land Survey was completed in 1864 by C. E. Davis and J. W. Webb, Jr. A wood post was set in a mound of dirt with pits to mark the corner.

Jonah Peterman surveyed north from this corner in 1883 and east from this corner in 1896. John Norgaard surveyed south of this corner in 1895. Neither indicated whether there was a monument in place marking the corner.

In 1901, John Norgaard, County Surveyor, could not find this corner. He set a 6 inch by 6 inch by 24 inch long granite monument at equal proportional distance north and south between the Southeast Corner Section 16 and the East Quarter post of Section 9 and with the government distance of 2643 feet east of the North Quarter post of Section 16. The top of the monument projected 4 inches above the ground.

John Norgaard states in his survey notes of 1911 and 1918 that the monument was lost but he indicated the position as being 1321.5 feet east of the sixteenth line as called for in his previous survey work in the area.

The Burlington-Northern Railroad, Inc. profile map, date unknown, indicates the position of the corner as being 850 feet east of engineer's station 1945+81. No mention is made if any type of monument was marking the corner.

Selmer Hildahl has lived in this area for thirty years and owns all the land surrounding the corner. He stated that the granite monument is in the foundation of the granery at his farmstead. The previous landowner had removed the monument from the field many years before because he did not like to plow around it.

No occupation lines in the immediate area indicate the position of the corner. There is an east-west township road which extends from the northwest corner of the section to a point approximately 3/4 of a mile east then curves southeasterly, but the local residents claim the centerline of the road is somewhat north of the section line.

The corner was set by a derivative method. It is set on a line extending from the northwest corner of the section through the Burlington-Northern Railroad engineer's station 1945+81 and 1321.5 feet east of an occupation line marking the sixteenth line to the west. Norgaard's distance from the northwest corner of the section to the sixteenth line matches the 1973 electronic distance within 0.6 feet. This positions the corner 88.0 feet west and 12.7 feet south of the lost location. The section line is 3.0 feet south of the centerline of the east-west township road at the quarter corner.

For detail of survey analysis, photographs taken, and 1973 electronic survey measurements, see Survey Report for S.P. 8701 from the Yellow Medicine River to Granite Falls on file in the Surveys Section, Minnesota Highway Department, Willmar, Minnesota.