

CERTIFICATE OF LOCATION OF GOVERNMENT CORNER

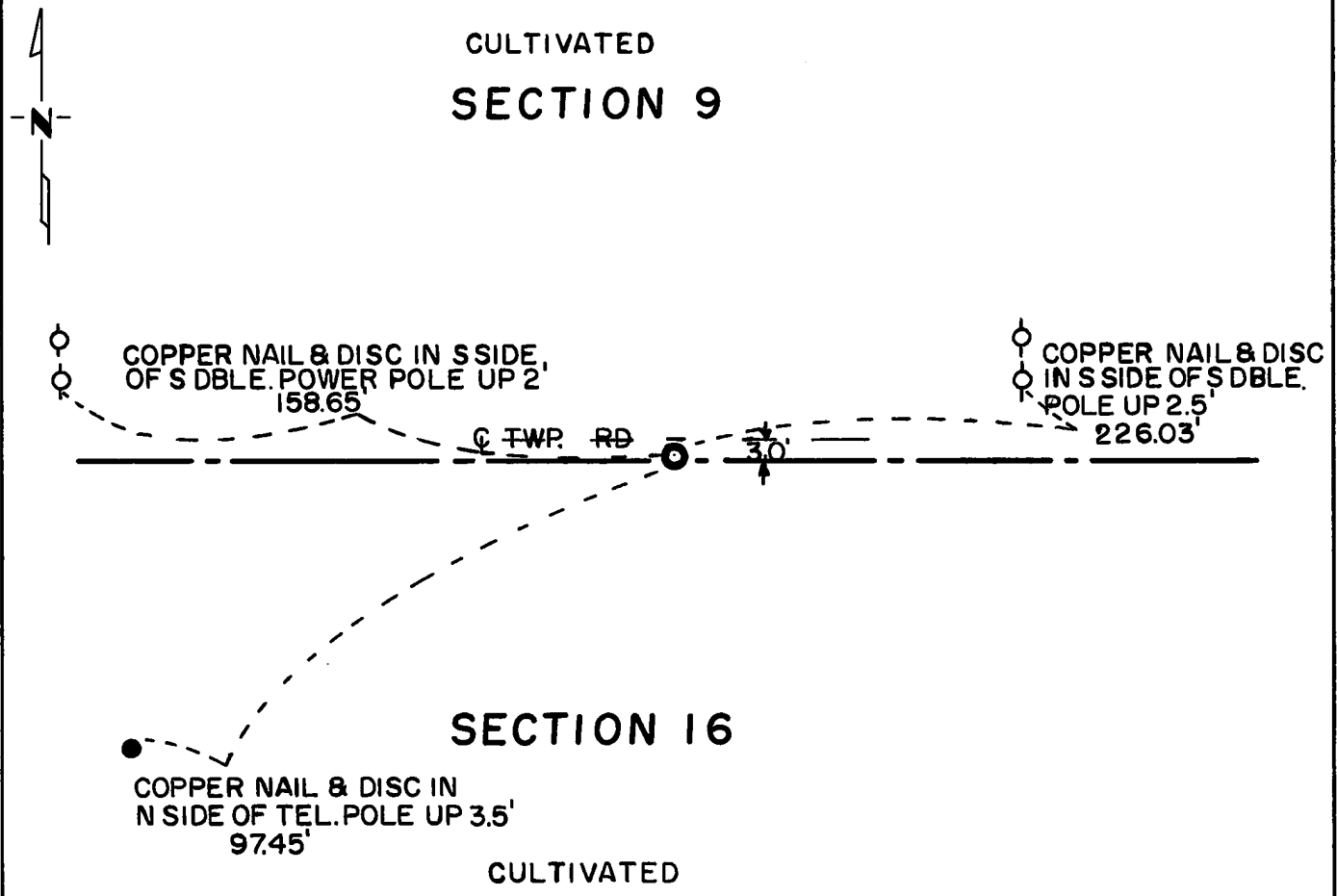
North Quarter _____ Corner of Section 16, Township 115N, Range 39W, 5th P.M.

STATE OF MINNESOTA, County of Yellow Medicine

At the corner location shown on the sketch:

- On Sept. 11, 1973 found a nothing was found in excavation
DATE
- left monument as found, lowered monument, removed monument (explain)
- On May 3, 1974 placed a Minnesota Highway Dept. cast iron monument, 3" below
DATE road surface, stamped "N $\frac{1}{2}$ Cor. Sec. 16"

SKETCH OF REFERENCE TIES



Statement of evidence relative to this corner location is on back of page.

I hereby certify that this document and the data contained herein was prepared by me or under my direct supervision.

Jesse E. Fant 6/3/74
SIGNATURE DATE

Registration No. 3230

Land Surveyor, Professional Engineer

County Surveyor, County Engineer

OFFICE OF THE REGISTER OF DEEDS
County of Yellow Medicine

I hereby certify that this document was filed in the Reg. of Deeds office at 3:30 P.M. on the 18 day of June A.D., 1974

Register of Deeds Norman J. Opdahl

By Kay Nordahl, Deputy

DOCUMENT NO. 163590

Statement of Evidence: NORTH QUARTER CORNER SECTION 16, T115N, R39W, 5th P.M.

The Public Land Survey was completed in 1864 by C. E. Davis and J. W. Webb, Jr. A wood post was set in a mound of dirt with pits to mark the corner.

John Norgaard, County Surveyor, did survey work along the north line of the section in 1911 and 1918. His notes do not indicate that he found or set anything to mark the corner. These surveys indicate that the corner is 1.5 feet west of being midway between section corners.

A Burlington-Northern Railroad, Inc., profile map shows the corner to be 1790 feet west of engineer's station 1945+81, but did not indicate that anything was in place to mark the corner.

No record evidence was found showing that anything has been set to mark the corner since the original Public Land Survey.

An east-west township road is in place but local landowners claim that the centerline of the road is somewhat north of the section line. There are no occupation lines north or south to indicate the east-west position of the corner.

On September 11, 1973, a Minnesota Highway Department survey crew excavated for the corner at a point 2640 feet east of the northwest corner of the section and at the centerline of the east-west township road. This distance was determined by comparing Norgaard's distance to a 1973 electronic survey distance from the Northwest corner of the section to a fence line marking the sixteenth line to the east. The extent of the excavation was 5 feet east and west and 4 feet north and 5 feet south of this point to a depth of 4½ feet. Nothing was found in the excavation to indicate the location of the corner.

The corner was set by a derivative method using Norgaard's 1911 and 1918 survey dimensions from the northeast corner of the section and on line between the section corners. This positions the corner 2643 feet west of the northeast corner of the section and on line between section corners. The section line passes through the Burlington-Northern Railroad engineer's station 1945+81. The corner is 3 feet south of the centerline of the east-west township road. It is 0.9 feet west of the lost location.

For details of survey analysis, photographs taken during excavation, and 1973 electronic survey measurements, see Survey Report for S.P. 8701 from the Yellow Medicine River to Granite Falls on file in the Surveys Section, Minnesota Highway Department, Willmar, Minnesota.