

CERTIFICATE OF LOCATION OF GOVERNMENT CORNER

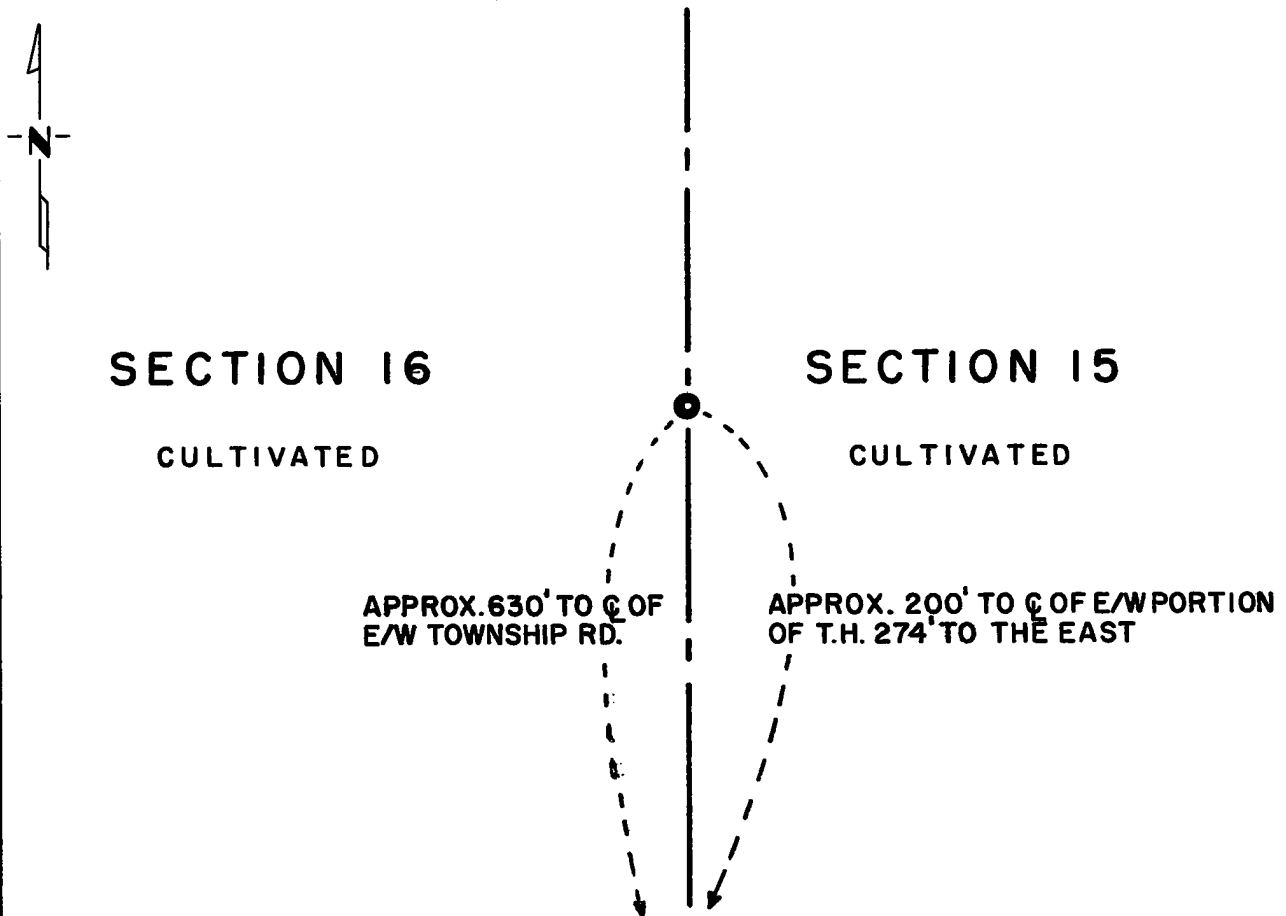
East Quarter _____ Corner of Section 16, Township 115N, Range 39W, 5th P.M.

STATE OF MINNESOTA, County of Yellow Medicine

At the corner location shown on the sketch:

- On Sept. 17, 1973 found a nothing was found
DATE
- left monument as found, lowered monument, removed monument (explain)
- On May 2, 1974 placed a Minnesota Highway Department Cast Iron Monument,
DATE
18" below ground, stamped "East Quarter Cor. Sec. 16"

SKETCH OF REFERENCE TIES



Statement of evidence relative to this corner location is on back of page.

I hereby certify that this document and the data contained herein was prepared by me or under my direct supervision.

Jesse E. Fant June 3 1974
SIGNATURE DATE

Registration No. 3230

- Land Surveyor, Professional Engineer
- County Surveyor, County Engineer

OFFICE OF THE REGISTER OF DEEDS
County of Yellow Medicine

I hereby certify that this document was filed in the Reg. of Deeds office at 3:35 P. .M. on the 18 day of June A.D., 19 74

Register of Deeds Norman J. Opdahl

By Kay Nordahl, Deputy

DOCUMENT NO. 163591

Statement of Evidence: EAST QUARTER CORNER SECTION 16, T115N, R39W, 5th P.M.

The Public Land Survey was completed in 1864 by C. E. Davis and J. W. Webb, Jr. A wood post was set in a mound of dirt with pits to mark the corner.

Jonah Peterman found the post in 1889 when he surveyed Union Cemetery to the east. The position of the quarter corner could not be determined from the resulting deed description of the cemetery.

John Norgaard surveyed the east line of this section in 1895. He did not indicate whether a monument marking the corner was in place. However, his survey notes indicate that the corner was 0.5 feet north of being midway between section corners.

No record evidence has been found that any type of monument has been set to mark the corner since the original Public Land Survey.

Since the corner falls in a cultivated field and there are no occupation lines in the immediate area to determine the position of the corner on the ground, no excavation was made for this corner. East-west fence lines in place, which are west of the section line, do not lead to a common position for the corner.

The corner was set at the lost location.

For details of survey analysis, photographs taken, and 1973 electronic survey measurements, see Survey Report for S.P. 8701 from the Yellow Medicine River to Granite Falls on file in the Surveys Section, Minnesota Highway Department, Willmar, Minnesota.