

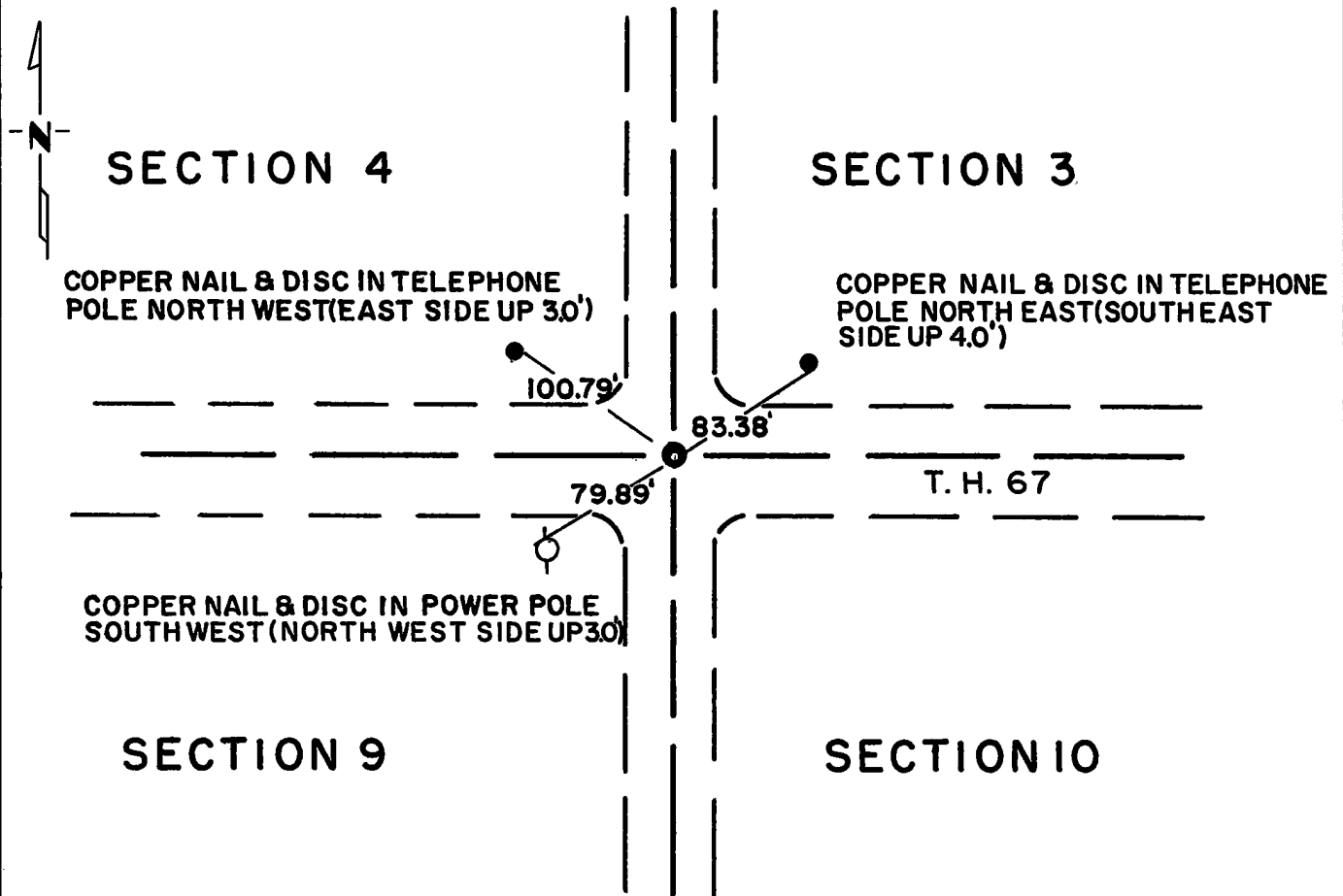
CERTIFICATE OF LOCATION OF GOVERNMENT CORNER

Northeast Corner of Section 9, Township 115N, Range 41W, 5th P.M.
STATE OF MINNESOTA, County of Yellow Medicine

At the corner location shown on the sketch:

- On May 22, 1974 found a 6 inch x 6 inch x 24 inch jasper monument down 4.0
DATE foot below road surface on centerline North-South road and 1.9
foot North centerline T.H. 67.
- left monument as found, lowered monument, removed monument (explain)
- On July 19, 1974 placed a Minnesota Highway Department cast iron monument with
DATE 3/4 inch iron pin under (cast iron down 1/2 inch).

SKETCH OF REFERENCE TIES



Statement of evidence relative to this corner location is on back of page.

I hereby certify that this document and the data contained herein was prepared by me or under my direct supervision.

Goodwin R. Heimdahl 9-23-74
SIGNATURE DATE

Registration No. 5761

- Land Surveyor, Professional Engineer
- County Surveyor, County Engineer

OFFICE OF THE REGISTER OF DEEDS
County of Yellow Medicine

I hereby certify that this document was filed in the Reg. of Deeds office at 1:30 P.M. on the 24 day of SEPTEMBER A.D., 19 74

Register of Deeds Norman J. Opdahl

By Kay Verdahl, Deputy

DOCUMENT NO. 163993

Statement of Evidence: NORTHEAST CORNER SECTION 9, T115N, R41W

In 1901 John E. Norgaard found a stake and set a 6 inch x 6 inch x 24 inch jasper monument to mark the corner.

Prior to 1956 the Minnesota Highway Department found the jasper monument in place.

On May 22, 1974 the Minnesota Highway Department found the jasper monument on centerline of North-South township road and 1.9 feet North of centerline of East-West highway (T.H. 67).

On July 19, 1974 the Minnesota Highway Department placed a cast iron monument with a 3/4 inch iron pin below it to mark the corner.